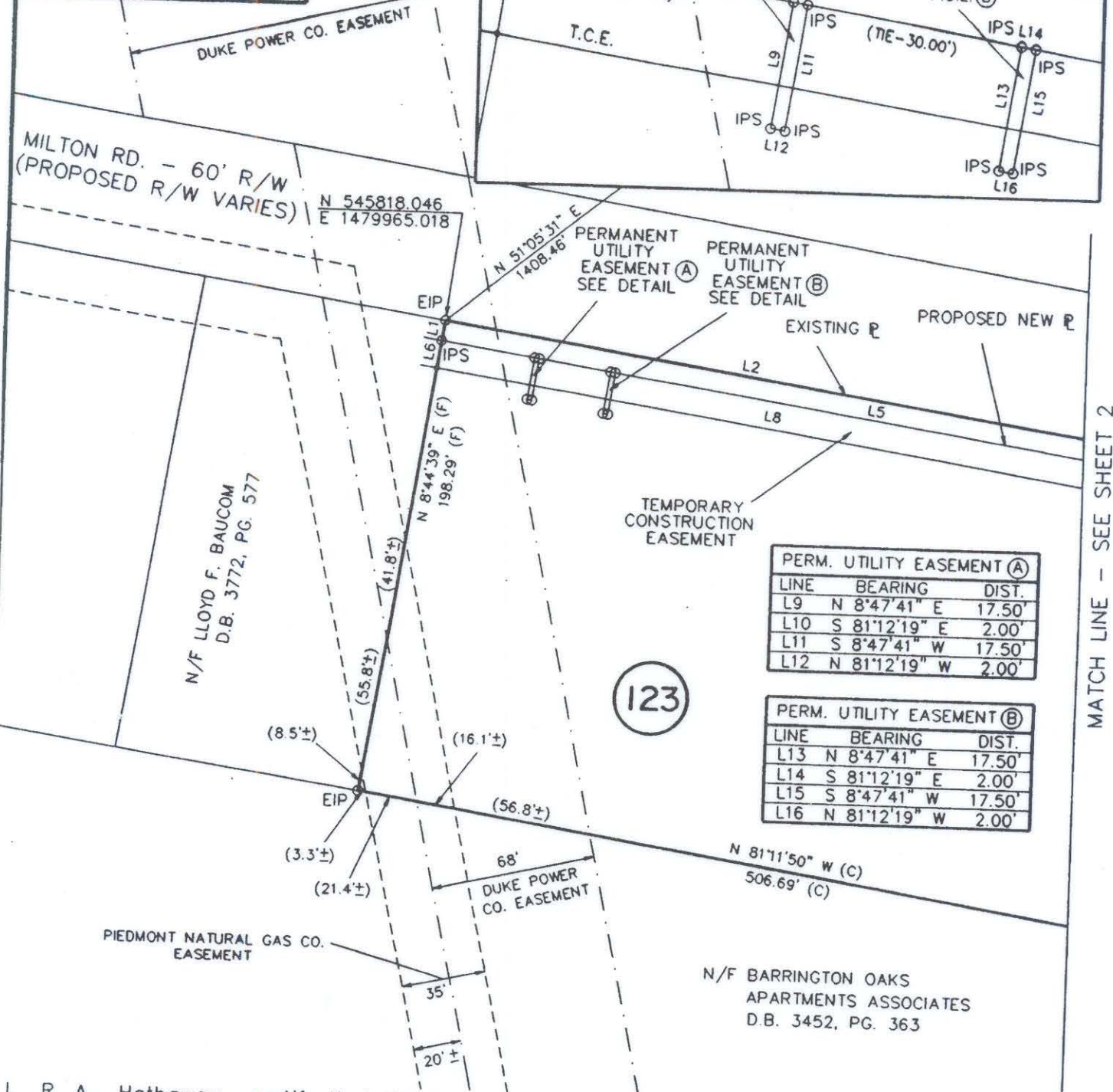
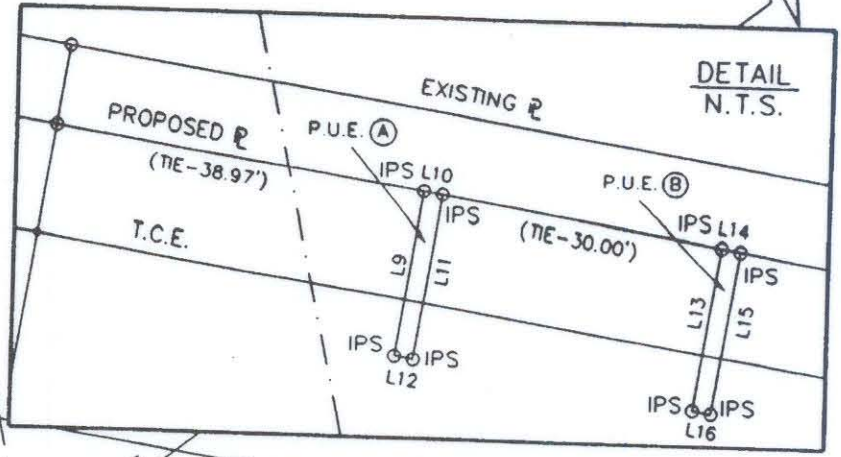
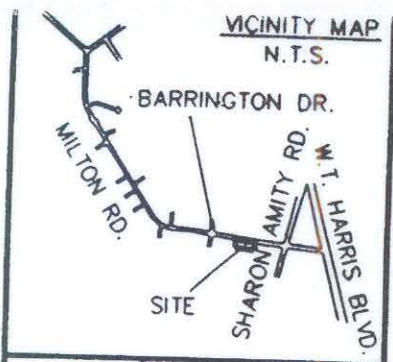


NCGS MON. "RANDY"
N 546702.660
E 1481061.021

N.C. GRID - N.A.D. 83
COMBINED SCALE FACTOR = 9998362



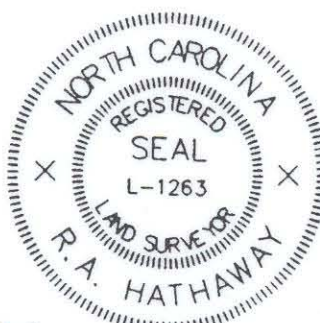
PERM. UTILITY EASEMENT (A)		
LINE	BEARING	DIST.
L9	N 8°47'41" E	17.50'
L10	S 81°12'19" E	2.00'
L11	S 8°47'41" W	17.50'
L12	N 81°12'19" W	2.00'

PERM. UTILITY EASEMENT (B)		
LINE	BEARING	DIST.
L13	N 8°47'41" E	17.50'
L14	S 81°12'19" E	2.00'
L15	S 8°47'41" W	17.50'
L16	N 81°12'19" W	2.00'

123

MATCH LINE - SEE SHEET 2

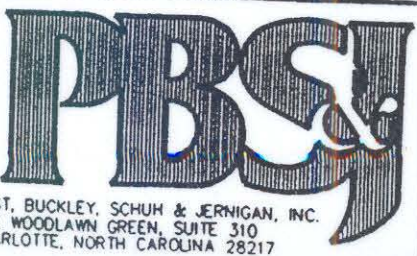
I, R. A. Hathaway, certify that this plat was drawn under my supervision. This plat is a compilation of field and deed data and is NOT intended to be a boundary survey of the property shown.



- REFERENCES:
- 1) NCGS MONUMENTS "RANDY" AND "TAYLOR".
 - 2) CHARLOTTE ENG. DEPT. R/W PLANS FOR PROPOSED MILTON RD. IMPROVEMENTS PREP. BY PBS&J, CHARLOTTE, DATED 10/25/93. (PARCEL #123)
 - 3) D.B. 3772, PG. 577.
 - 4) D.B. 2603, PG. 9.
- NOTES:
- 1) EIP DENOTES EXISTING IRON PIPE.
 - 2) IPS DENOTES IRON PIPE SET.
 - 3) ALL DISTANCES ARE HORIZONTAL GROUND.
 - 4) AREAS BY COORDINATE COMPUTATION.
 - 5) (C) DENOTES COMPUTED.
 - 6) (F) DENOTES FIELD MEASUREMENT.



R. A. Hathaway, NCRLS # L-1263



POST, BUCKLEY, SCHUM & JERNIGAN, INC.
ONE WOODLAWN GREEN, SUITE 310
CHARLOTTE, NORTH CAROLINA 28217

 CHARLOTTE ENGINEERING DEPARTMENT		JOB NO. 28-049.15
MILTON ROAD IMPROVEMENTS PROJECT NO. 512-89-062		DRG NO. ML7123A.DWG
PROPERTY OF LLOYD F. BAUCOM TAX MAP CODE 99-211-PARCEL 4 CITY OF CHARLOTTE, MECKLENBURG COUNTY, N.C.		SHEET 1
DRAWN BY: B.L.H. CHECKED BY: D.S.L. SURVEY SUPV.	DATE: 4/28/95 SCALE: 1" = 60'	OF 2

99-211-29