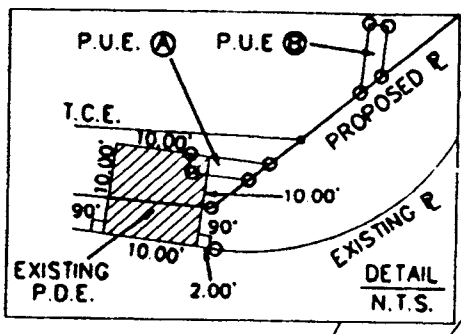


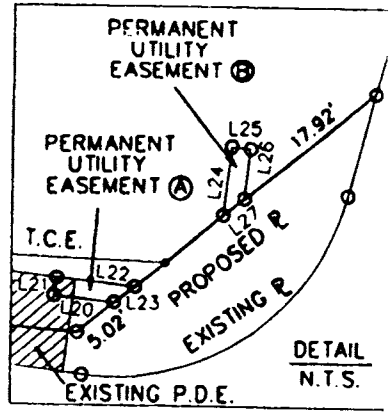
NCG 'ON. "RANDY"  
N .6702.660  
E 1481061.021

DESC.	DELTA	RADIUS	LENGTH	TANGENT	CHBRG	CHDIST
C1	0°57'15"	2411.98'	40.17'	20.09'	S 80°56'16" E	40.17'
C2	0°14'43"	11420.66'	48.89'	24.45'	N 81°53'36" W	48.89'
C3	82°23'56"	26.09'	37.52'	22.84'	S 55°59'34" W	34.37'
C4	2°20'29"	2411.98'	98.57'	49.29'	N 81°37'53" W	98.56'
C5	0°17'53"	2411.98'	12.55'	6.28'	N 81°33'50" W	12.55'
C6	0°08'48"	11420.66'	29.38'	14.66'	N 81°56'33" W	29.31'

N.C. GRID - N.A.D. 83  
COMBINED SCALE FACTOR = .9998362



DESC.	SQ. FT.	AC.
TOTAL PARCEL	200390	4.6
TOTAL AREA ACQ'D	580	0.01
TOTAL PERM. DRAINAGE EASE.	325	n/a
TOTAL PERM. UTILITY EASE. (A)	15	n/a
TOTAL PERM. UTILITY EASE. (B)	13	n/a
AREA REMAINING	199457	4.6
TOTAL TEMP. CONST. EASE.	5291	0.12



N/F C.A. AUSTIN  
D.B. 5523, PG. 509

LINE	BEARING	DIST.
L3	S 85°21'12" E	99.64'
L4	N 51°23'39" E	40.74'
L5	S 14°47'14" W	11.10'
C3	SEE TABLE	
L6	N 82°48'07" W	100.62'

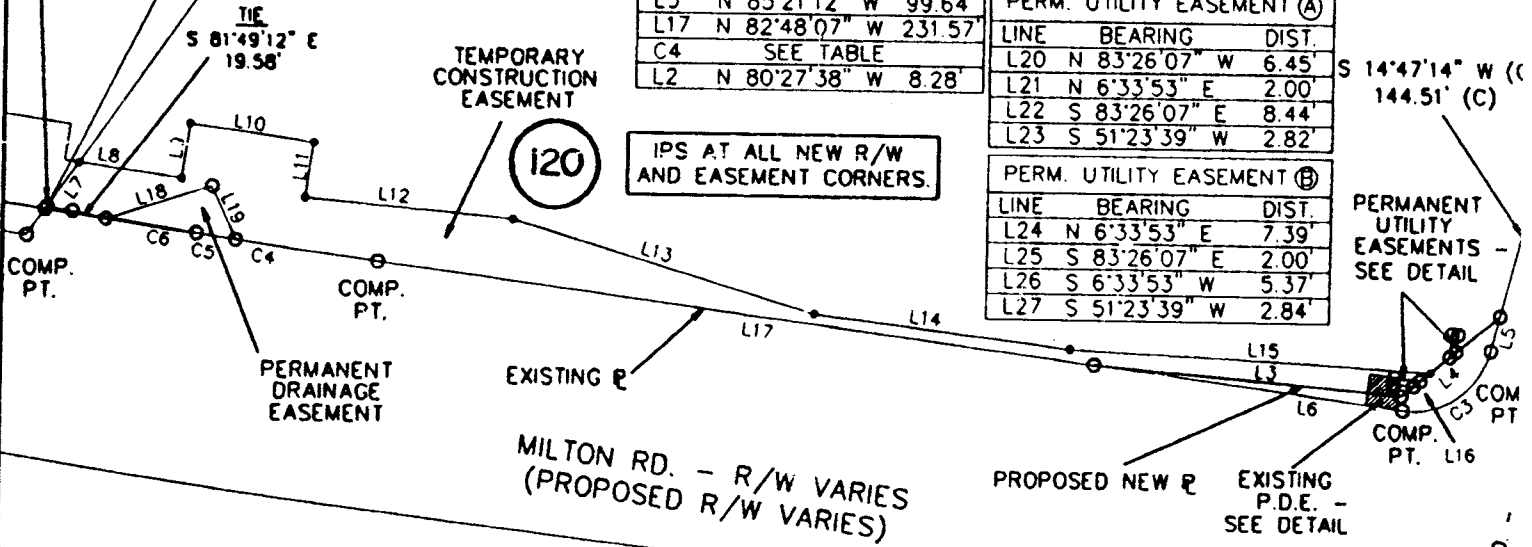
  

LINE	BEARING	DIST.
L18	N 72°07'35" E	35.44'
L19	S 24°36'39" E	18.51'
C5	SEE TABLE	
C6	SEE TABLE	

LINE	BEARING	DIST.
L7	N 35°05'53" E	17.52'
L8	S 81°52'57" E	33.09'
L9	N 8°01'21" E	18.00'
L10	S 82°04'39" E	39.75'
L11	S 7°49'21" W	18.00'
L12	S 84°55'18" E	66.73'
L13	S 73°38'00" E	100.84'
L14	S 83°13'12" E	82.70'
L15	S 87°21'59" E	116.69'
L16	S 51°23'39" W	12.07'
L17	N 85°21'12" W	231.57'
C4	SEE TABLE	
L2	N 80°27'38" W	8.28'

LINE	BEARING	DIST.
L20	N 83°26'07" W	6.45'
L21	N 6°33'53" E	2.00'
L22	S 83°26'07" E	8.44'
L23	S 51°23'39" W	2.82'

LINE	BEARING	DIST.
L24	N 6°33'53" E	7.39'
L25	S 83°26'07" E	2.00'
L26	S 6°33'53" W	5.37'
L27	S 51°23'39" W	2.84'



IPS AT ALL NEW R/W AND EASEMENT CORNERS.

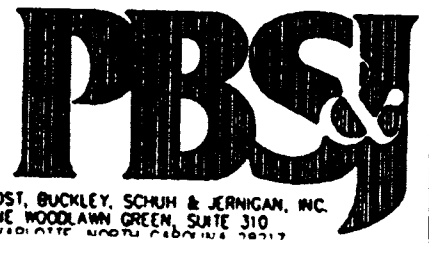
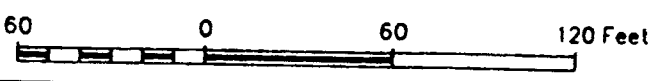
I, R. A. Hathaway, certify that this plot was drawn under my supervision. This plot is a compilation of field and deed data and is NOT intended to be a boundary survey of the property shown.



- REFERENCES:
- 1) NCGS MONUMENTS "RANDY" AND "TAYLOR".
  - 2) CHARLOTTE ENG. DEPT. R/W PLANS FOR PROPOSED MILTON RD. IMPROVEMENTS PREP. BY PBS&J, CHARLOTTE, DATED 10/25/93. (PARCEL #120)
  - 3) D.B. 3740, PG. 124.
  - 4) D.B. 3943, PG. 617.
  - 5) D.B. 4176, PG. 199.
  - 6) D.B. 4209, PG. 810.
  - 7) D.B. 5123, PG. 984.

- NOTES:
- 1) EIP DENOTES EXISTING IRON PIPE
  - 2) IPS DENOTES IRON PIPE SET.
  - 3) ALL DISTANCES ARE HORIZONTAL GROUND.
  - 4) AREAS BY COORDINATE COMPUTATION.
  - 5) (C) DENOTES COMPUTED.
  - 6) (F) DENOTES FIELD MEASUREMENT

R. A. Hathaway  
R. A. Hathaway, NCRLS # L-1263



REVISIONS		JOB NO. 89-045.1
08-18-98	10-20-95	
DRAWN BY: BLM		SHEET 1
CHECKED BY:		OF

CHARLOTTE ENGINEERING DEPARTMENT MILTON ROAD IMPROVEMENTS PROJECT NO. 512-89-062 PROPERTY OF HOUSING AUTHORITY OF THE CITY OF CHARLOTTE TAX MAP CODE 107-831-PARCEL 5 CITY OF CHARLOTTE, MECKLENBURG COUNTY, N.C.	

107-031-05