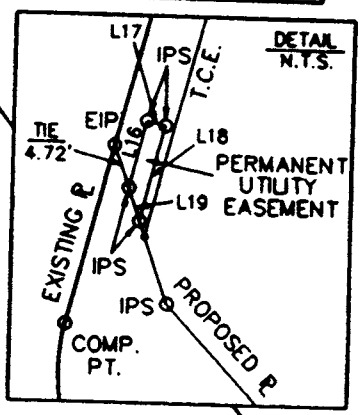
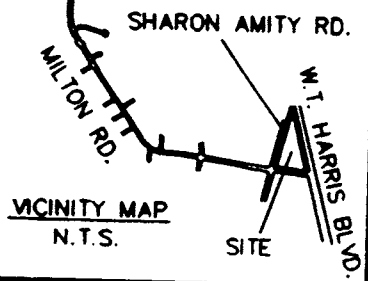


CURVE DATA TABLE						
DESC.	DELTA	RADIUS	LENGTH	TANGENT	CHBRG	CHDIST
C1	97°35'21"	20.49'	34.90'	23.40'	N 34°38'27" W	30.83'
C2	13°22'13"	215.00'	50.17'	25.20'	N 20°50'20" E	50.06'
C3	38°33'41"	215.00'	144.70'	75.21'	N 33°26'04" E	141.98'
C4	4°21'35"	1929.46'	146.82'	73.44'	S 39°34'37" E	146.78'

NCGS MON. "RANDY"
N 546702.660
E 1481061.021



N.C. GRID - N.A.D. 83
COMBINED SCALE FACTOR = .9998362

N 52°50'14" E (C)
45.67' (C)

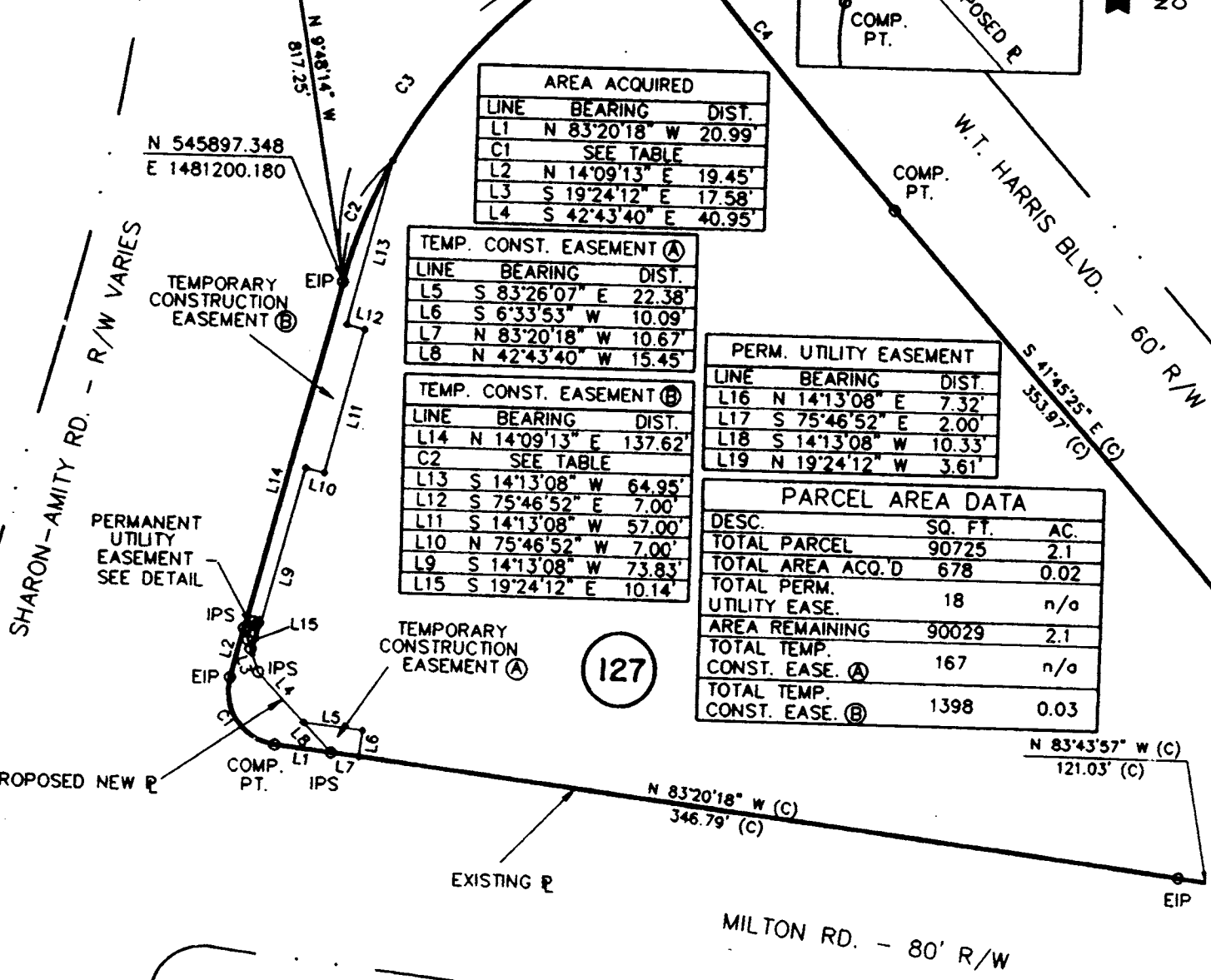
AREA ACQUIRED		
LINE	BEARING	DIST.
L1	N 83°20'18" W	20.99'
C1	SEE TABLE	
L2	N 14°09'13" E	19.45'
L3	S 19°24'12" E	17.58'
L4	S 42°43'40" E	40.95'

TEMP. CONST. EASEMENT (A)		
LINE	BEARING	DIST.
L5	S 83°26'07" E	22.38'
L6	S 6°33'53" W	10.09'
L7	N 83°20'18" W	10.67'
L8	N 42°43'40" W	15.45'

PERM. UTILITY EASEMENT		
LINE	BEARING	DIST.
L16	N 14°13'08" E	7.32'
L17	S 75°46'52" E	2.00'
L18	S 14°13'08" W	10.33'
L19	N 19°24'12" W	3.61'

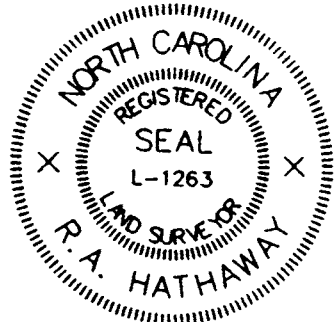
TEMP. CONST. EASEMENT (B)		
LINE	BEARING	DIST.
L14	N 14°09'13" E	137.62'
C2	SEE TABLE	
L13	S 14°13'08" W	64.95'
L12	S 75°46'52" E	7.00'
L11	S 14°13'08" W	57.00'
L10	N 75°46'52" W	7.00'
L9	S 14°13'08" W	73.83'
L15	S 19°24'12" E	10.14'

PARCEL AREA DATA		
DESC.	SQ. FT.	AC.
TOTAL PARCEL	90725	2.1
TOTAL AREA ACQ'D	678	0.02
TOTAL PERM. UTILITY EASE.	18	n/a
AREA REMAINING	90029	2.1
TOTAL TEMP. CONST. EASE. (A)	167	n/a
TOTAL TEMP. CONST. EASE. (B)	1398	0.03



127

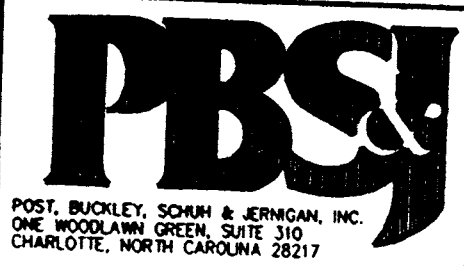
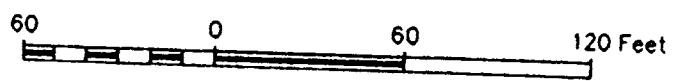
I, R. A. Hathaway, certify that this plat was drawn under my supervision. This plat is a compilation of field and deed data and is NOT intended to be a boundary survey of the property shown.



- REFERENCES:
- 1) NCGS MONUMENTS "RANDY" AND "TAYLOR".
 - 2) CHARLOTTE ENG. DEPT. R/W PLANS FOR PROPOSED MILTON RD. IMPROVEMENTS PREP. BY PBS&J, CHARLOTTE, DATED 10/25/93. (PARCEL #127)
 - 3) D.B. 5936, PG. 538.
 - 4) D.B. 4049, PG. 500.
 - 5) D.B. 2852, PG. 493.

- NOTES:
- 1) EIP DENOTES EXISTING IRON PIPE
 - 2) IPS DENOTES IRON PIPE SET.
 - 3) ALL DISTANCES ARE HORIZONTAL GROUND.
 - 4) AREAS BY COORDINATE COMPUTATION.
 - 5) (C) DENOTES COMPUTED.
 - 6) (F) DENOTES FIELD MEASUREMENT.

R. A. Hathaway, NCRLS # L-1263



REVISIONS		JOB NO.	
1.)	4/14/99	28-049.1	
DRAWN BY: B.L.J.		JOB NO.	
CHECKED BY: D.S.L.		MLT127.DW	
SURVEY SUPER.		SHEET	
DATE 3/16/94		1	
SCALE 1" = 60'		OF	
		2	

107-032-01/02