

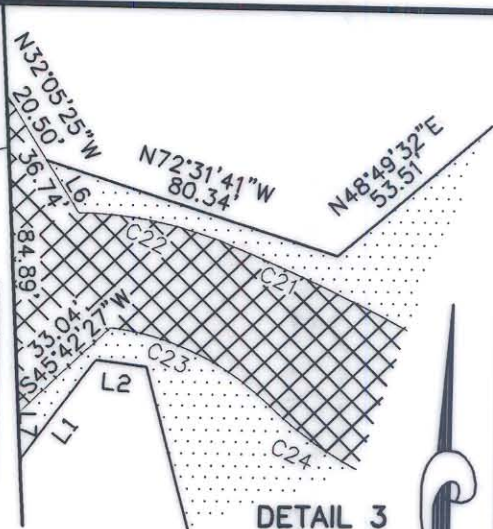
I, R. DENNIS SMITH, CERTIFY THAT THIS PLAT WAS PREPARED UNDER MY SUPERVISION AND THAT THE PLAT WAS PREPARED FOR THE PURPOSE OF ACQUISITION AND EASEMENTS ONLY, AND IS NOT INTENDED TO BE A BOUNDARY SURVEY OF PROPERTY SHOWN.

R. Dennis Smith 4/7/98

R. DENNIS SMITH, NC R.L.S. L-1482 DATE LINE TABLE



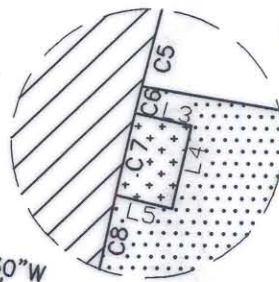
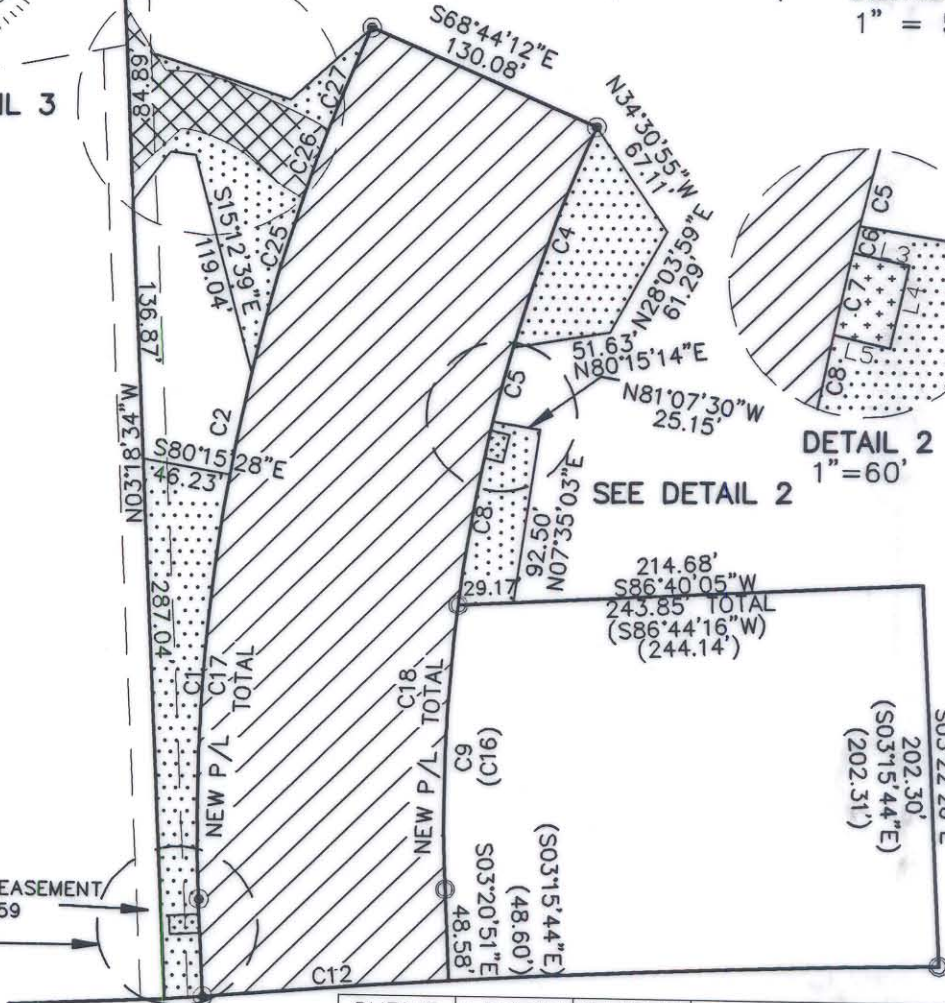
LINE	LENGTH	BEARING
L1	32.69	N36°11'21"E
L2	13.58	N83°33'48"W
L3	10.11	S77°53'12"E
L4	15.02	S12°00'50"W
L5	10.11	N77°43'37"W
L6	16.24	N32°05'25"E
L7	12.10'	S03°18'34"E



DETAIL 3
1" = 50'

CURVE	LENGTH	RADIUS	CHORD BEARING	CHORD
C21	50.34'	405.00'	N 64°54'07" W	50.31'
C22	42.29'	103.00'	N 78°18'36" W	41.99'
C23	46.67'	73.00'	N 64°47'30" W	45.88'
C24	29.05'	102.00'	N 54°21'08" W	28.95'
C25	91.96'	1021.00'	S 15°06'30" W	91.92'
C26	39.20'	1021.00'	S 18°47'18" W	39.20'
C27	117.68'	1021.00'	S 21°32'21" W	58.83'

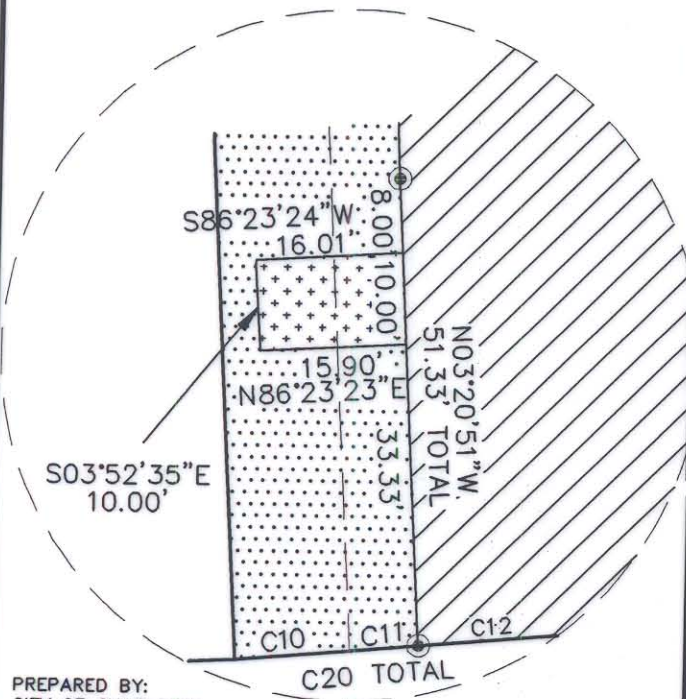
SEE DETAIL 3



DETAIL 2
1" = 60'


25' ROADWAY EASEMENT
PER MB 24-459
SEE DETAIL 1

CURVE	LENGTH	RADIUS	CHORD BEARING	CHORD
C1	226.43'	1021.00'	S 03°03'43" W	225.97'
C2	55.47'	1021.00'	S 10°58'18" W	55.46'
C3	189.99'	1021.00'	S 17°51'33" W	189.72'
C4	125.37'	891.00'	S 19°26'25" W	125.26'
C5	40.72'	891.00'	S 14°06'01" W	40.72'
C6	4.86'	891.00'	S 12°38'05" W	4.86'
C7	14.99'	891.00'	S 11°59'47" W	14.99'
C8	78.85'	891.00'	S 08°58'44" W	78.82'
C9	151.26'	891.00'	S 01°34'49" W	151.08'
C10	12.51'	5705.02'	S 84°38'49" W	12.51'
C11	7.50'	5705.02'	S 84°44'50" W	7.50'
C12	130.04'	5705.02'	S 85°26'17" W	130.03'
C13	256.97'	5705.02'	S 87°22'53" W	256.95'
C14	315.41'	5705.02'	N 89°44'40" W	315.37'
C15	54.89'	5705.02'	N 87°53'06" W	54.89'
(C16)	(151.31')	(891.00')	(N 01°36'09" W)	(151.13')
C17	471.90'	1021.00'	N 09°56'58" E	467.71'
C18	475.79'	891.00'	N 10°05'38" W	412.29'
(C19)	(317.02')	(5782.58')	(N 89°43'18" W)	(316.98')
C20	150.05'	5705.02'	S 85°20'15" W	150.04'



DETAIL 1
SCALE 1" = 20'

PREPARED BY:
CITY OF CHARLOTTE
ENGINEERING DEPARTMENT
600 EAST FOURTH STREET
CHARLOTTE, NC 28208
704-336-2291



CHARLOTTE
ENGINEERING DEPARTMENT

REVISIONS	EAST CIRCUMFERENTIAL ALBEMARLE RD.	JOB NO. 51297102
	CHARTER PROPERTIES LIMITED PARTNERSHIP	FILE NO.
	CHARLOTTE, MECKLENBURG CO., NC	PLAT1
DRAWN BY GAI		SHEET 2
CHECKED BY		OF 2
SURVEY SUPVR. <i>RDS</i>	DATE 04/07/98	SCALE SEE DETAIL

PER STATE PROJECT 8.1671901