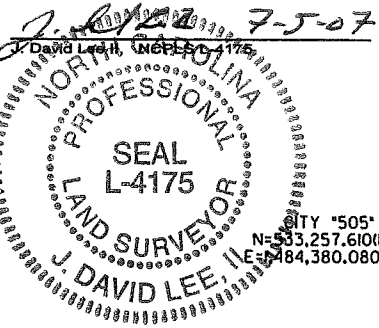


I, J. David Lee II NCPLS L-4175, certify that this plat was drawn under my supervision from an actual survey made under my supervision, and was prepared for the purpose of Right-of-Way and/or Easement Acquisition and only. And is not intended to be a boundary survey of property shown.



NOTES:

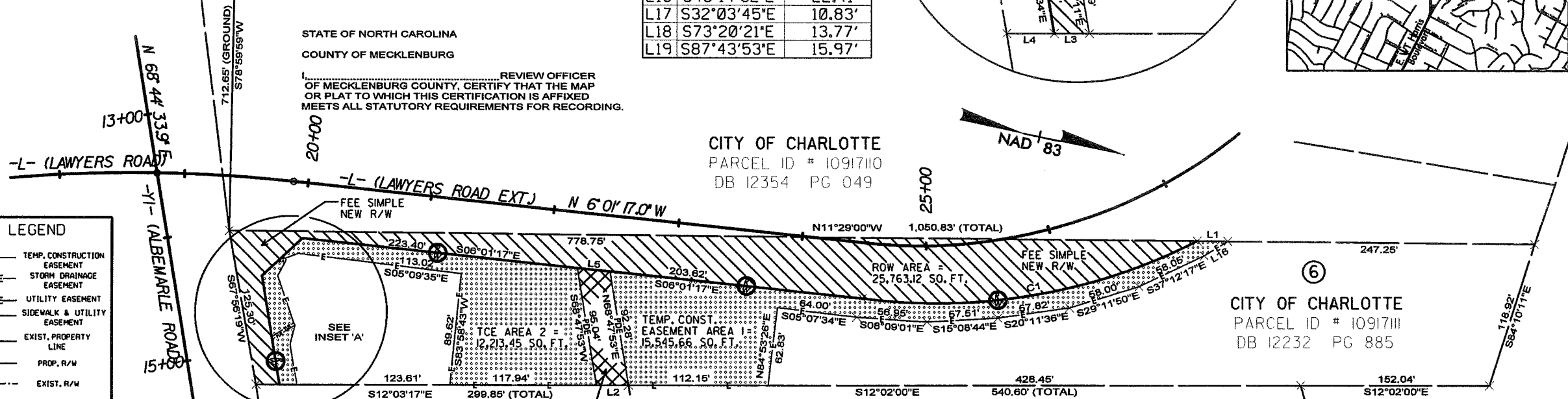
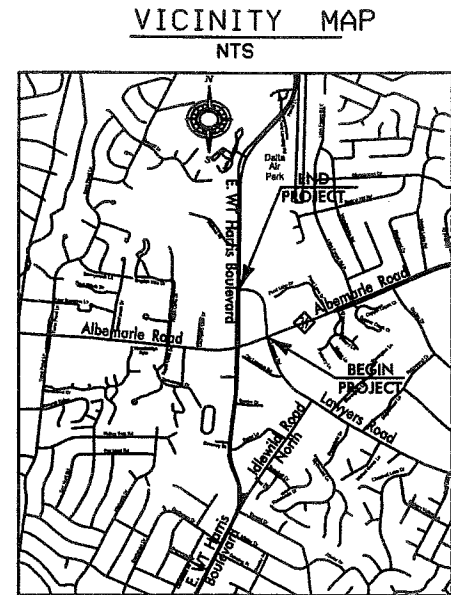
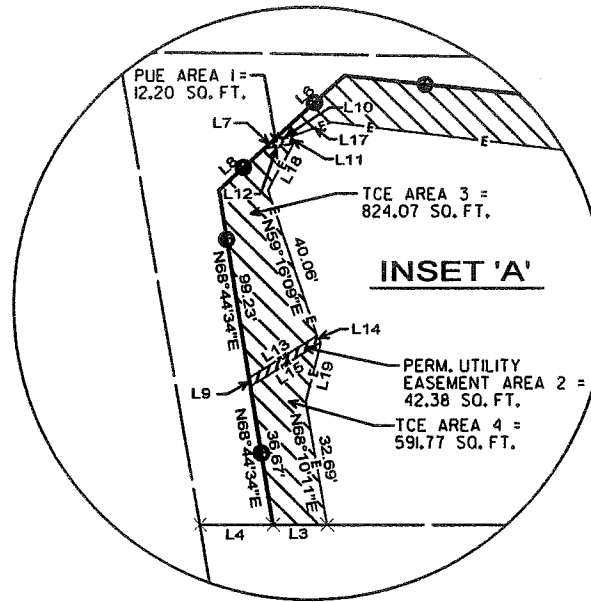
- BEARINGS AND DISTANCES SHOWN IN PARENTHESES ARE BASED ON RECORDED MAP INFORMATION.
- TOTAL AREA = 120,840.37 SQ. FT.
TCE AREA 1 = 15,545.66 SQ. FT.
TCE AREA 2 = 12,213.45 SQ. FT.
TCE AREA 3 = 824.07 SQ. FT.
TCE AREA 4 = 591.77 SQ. FT.
- TEMP. CONSTRUCTION EASEMENT = 29,174.95 SQ.FT.
TCE AREA 1 = 15,545.66 SQ. FT.
TCE AREA 2 = 12,213.45 SQ. FT.
TCE AREA 3 = 824.07 SQ. FT.
TCE AREA 4 = 591.77 SQ. FT.
- PERMANENT UTILITY EASEMENT = 54.58 SQ. FT.
PUE AREA 1 = 12.20 SQ. FT.
PUE AREA 2 = 42.38 SQ. FT.
- STORM DRAINAGE EASEMENT = 2,341.50 SQ. FT.
- FEE SIMPLE NEW R/W = 25,763.12 SQ. FT.
- AREA REMAINING = 95,077.25 SQ. FT.

STATE OF NORTH CAROLINA
COUNTY OF MECKLENBURG

I, _____ REVIEW OFFICER OF MECKLENBURG COUNTY, CERTIFY THAT THE MAP OR PLAT TO WHICH THIS CERTIFICATION IS AFFIXED MEETS ALL STATUTORY REQUIREMENTS FOR RECORDING.

LINE TABLE

	BEARING	DISTANCE
L1	N11°29'00"W	24.83'
L2	S12°03'17"E	25.32'
L3	S12°03'17"E	14.00'
L4	S12°03'17"E	18.97'
L5	S06°01'17"E	25.90'
L6	S54°49'20"E	24.54'
L7	S54°49'20"E	3.62'
L8	S54°49'20"E	16.03'
L9	N68°44'34"E	2.17'
L10	N21°15'26"W	4.59'
L11	N68°44'34"E	2.00'
L12	S21°15'26"E	7.61'
L13	N44°14'14"W	20.74'
L14	N45°45'46"E	2.00'
L15	S44°14'14"E	21.59'
L16	S43°14'32"E	22.41'
L17	S32°03'45"E	10.83'
L18	S73°20'21"E	13.77'
L19	S87°43'53"E	15.97'



LEGEND

- E— TEMP. CONSTRUCTION EASEMENT
- PDE— STORM DRAINAGE EASEMENT
- PUE— UTILITY EASEMENT
- S— SIDEWALK & UTILITY EASEMENT
- E— EXIST. PROPERTY LINE
- P— PROP. R/W
- E— EXIST. R/W
- ▨ TEMP. CONSTRUCTION EASEMENT
- ▩ STORM DRAINAGE EASEMENT
- ▧ SIDEWALK & UTILITY EASEMENT
- ▦ PERMANENT UTILITY EASEMENT

CITY OF CHARLOTTE
PARCEL ID # 10917112
DB 13176 PG 559

LAKE POINT GARDENS ASSOCIATES, LLC
& KINGSBERRY JACKSONVILLE, LLC
PARCEL ID # 10916106
DB 15463 PG 463

CITY OF CHARLOTTE
PARCEL ID # 10917111
DB 12232 PG 885

PARAGON GROUP LP &
CAMDON PROPERTY TRUST
PARCEL ID # 10917101
DB 8367 PG 324

CURVE TABLE

	CHORD BEARING	CHORD	RADIUS	LENGTH
C1	S21°43'57"E	273.16'	457.83'	277.38'



MULKEY
ENGINEERS & CONSULTANTS
7516 E. INDEPENDENCE BOULEVARD
SUITE 100
CHARLOTTE, NC 28227
(704) 537-7300
(704) 537-2811 (FAX)
WWW.MULKEYINC.COM

		JOB NO.
REVISIONS	LAWYERS ROAD EXTENSION	512-99-008
07/05/07		FILE NO.
SCALE	PROPERTY ACQUISITION OWNER: CITY OF CHARLOTTE	SHEET
1" = 50'		1
DRAWN BY: CKD	CHARLOTTE, MECKLENBURG CO., NC	OF
DATE: 07/03/07		CHECKED BY: JDL II SURVEY SUPVR.: JDL II