

LEGEND

- E— TEMP. CONSTRUCTION EASEMENT
- PDE— STORM DRAINAGE EASEMENT
- PUE— UTILITY EASEMENT
- SUE— SIDEWALK & UTILITY EASEMENT
- — — EXIST. PROPERTY LINE
- — — PROP. R/W
- — — EXIST. R/W
- [Pattern] TEMP. CONSTRUCTION EASEMENT
- [Pattern] STORM DRAINAGE EASEMENT
- [Pattern] SIDEWALK & UTILITY EASEMENT
- [Pattern] PERMANENT UTILITY EASEMENT

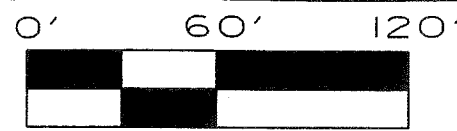
LINE TABLE

	BEARING	DISTANCE
L1	N68°47'53"E	16.50'
L2	S22°28'15"E	12.00'
L3	S68°35'10"W	4.95'
L4	N12°03'17"W	18.97'
L5	N12°03'17"W	14.01'
L6	N72°33'33"E	38.46'
L7	N72°33'33"E	2.00'
L8	N72°33'33"E	32.07'
L9	N72°33'33"E	22.03'
L10	N72°33'33"E	2.89'
L11	N21°15'26"W	15.06'
L12	N21°15'26"W	8.26'
L13	N68°44'34"E	2.00'
L14	S21°15'26"E	9.26'
L15	S21°15'26"E	14.19'
L16	N05°19'51"W	14.58'
L17	N05°19'51"W	36.44'
L18	N19°39'26"E	19.85'
L19	N43°32'30"E	18.79'
L20	S68°44'48"E	16.28'
L21	S02°49'20"E	18.97'
L22	S18°12'55"W	22.02'
L23	S06°30'44"E	23.57'
L24	S06°30'44"E	11.79'
L25	N71°18'59"E	7.52'
L26	N63°44'13"W	16.99'
L27	N63°44'13"W	7.80'
L28	N26°15'47"E	2.00'
L29	S63°44'13"E	9.80'
L30	S63°44'13"E	17.08'

CITY "505"
N=533,257.610(FT)
E=1,484,380.080(FT)

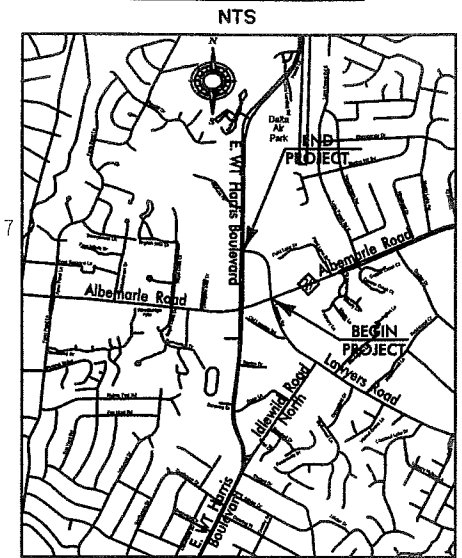
CITY OF CHARLOTTE
PARCEL ID # 10917111
DB 12232 PG 885

NAD 83
299.85' (TOTAL)
241.55'



LAKE POINT GARDENS ASSOCIATES, LLC
& KINGSBERRY JACKSONVILLE, LLC
PARCEL ID # 10916106
DB 15463 PG 463

VICINITY MAP

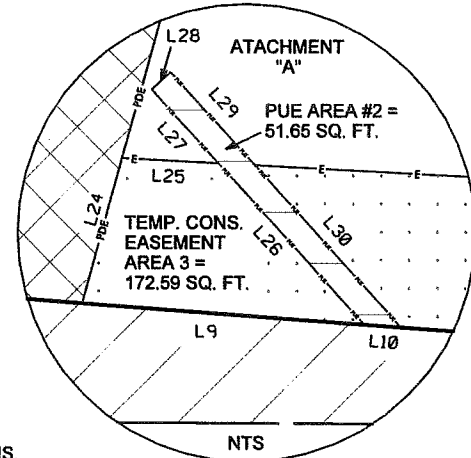
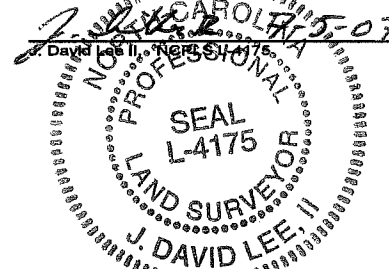


INTOWN SUITES
ALBEMARLE
ROAD LLC
PARCEL ID # 10917117
DB 9169 PG 587

STORM DRAIN
EASEMENT
AREA #2 =
8,542.52 SQ. FT.

CITY OF CHARLOTTE
PARCEL ID # 10917112
DB 13176 PG 559

I, J. David Lee II NCPLS L-4175, certify that this plat was drawn under my supervision from an actual survey made under my supervision, and was prepared for the purpose of Right-of-Way and/or Easement Acquisition and only. And is not intended to be a boundary survey of property shown.



STORM DRAIN
EASEMENT
AREA #1 =
4,643.58 SQ. FT.

TEMP. CONS.
EASEMENT
AREA #1 =
2,566.61 SQ. FT.

PUE AREA #1 =
46.77 SQ. FT.

TEMP. CONS.
EASEMENT
AREA #2 =
474.40 SQ. FT.

TEMP. CONS.
EASEMENT
AREA #4 =
1,707.46 SQ. FT.

FEE SIMPLE
NEW R/W

NEW ROW
AREA = 5,081.22 SQ. FT.

SEE ATTACHMENT
"A"

STATE OF NORTH CAROLINA
COUNTY OF MECKLENBURG

I, _____ REVIEW OFFICER
OF MECKLENBURG COUNTY, CERTIFY THAT THE MAP
OR PLAT TO WHICH THIS CERTIFICATION IS AFFIXED
MEETS ALL STATUTORY REQUIREMENTS FOR RECORDING.

MULKEY
ENGINEERS & CONSULTANTS
7516 E. INDEPENDENCE BOULEVARD
SUITE 100
CHARLOTTE, NC 28227
(704) 537-7300
(704) 537-2811 (FAX)
WWW.MULKEYINC.COM

CHARLOTTE
ENGINEERING & PROPERTY MANAGEMENT

REVISIONS	LAWYERS ROAD EXTENSION	JOB NO. 512-99-008
07/05/07		FILE NO.
SCALE 1" = 60'	PROPERTY ACQUISITION OWNER: CITY OF CHARLOTTE	SHEET 1
DRAWN BY: CKD		OF 1
DATE: 07/03/07		CHECKED BY: JDL II SURVEY SUPVR.: JDL II

DB 23239 PG 579

NOTES:

- BEARINGS AND DISTANCES SHOWN IN PARENTHESES ARE BASED ON RECORDED MAP INFORMATION.
- TOTAL AREA = 114,258.68 SQ. FT.
- TEMP. CONSTRUCTION EASEMENT = 4,921.06 SQ. FT.
TCE AREA 1 = 2,566.61 SQ. FT.
TCE AREA 2 = 474.40 SQ. FT.
TCE AREA 3 = 172.59 SQ. FT.
TCE AREA 4 = 1,707.46 SQ. FT.
- PERMANENT UTILITY EASEMENT = 98.42 SQ. FT.
PUE AREA 1 = 46.77 SQ. FT.
PUE AREA 2 = 51.65 SQ. FT.
- PERMANENT DRAINAGE EASEMENT = 13,186.10 SQ. FT.
PDE AREA 1 = 4,643.58 SQ. FT.
PDE AREA 2 = 8,542.52 SQ. FT.
- FEE SIMPLE NEW R/W = 5,081.22 SQ. FT.
- AREA REMAINING = 109,177.46 SQ. FT.