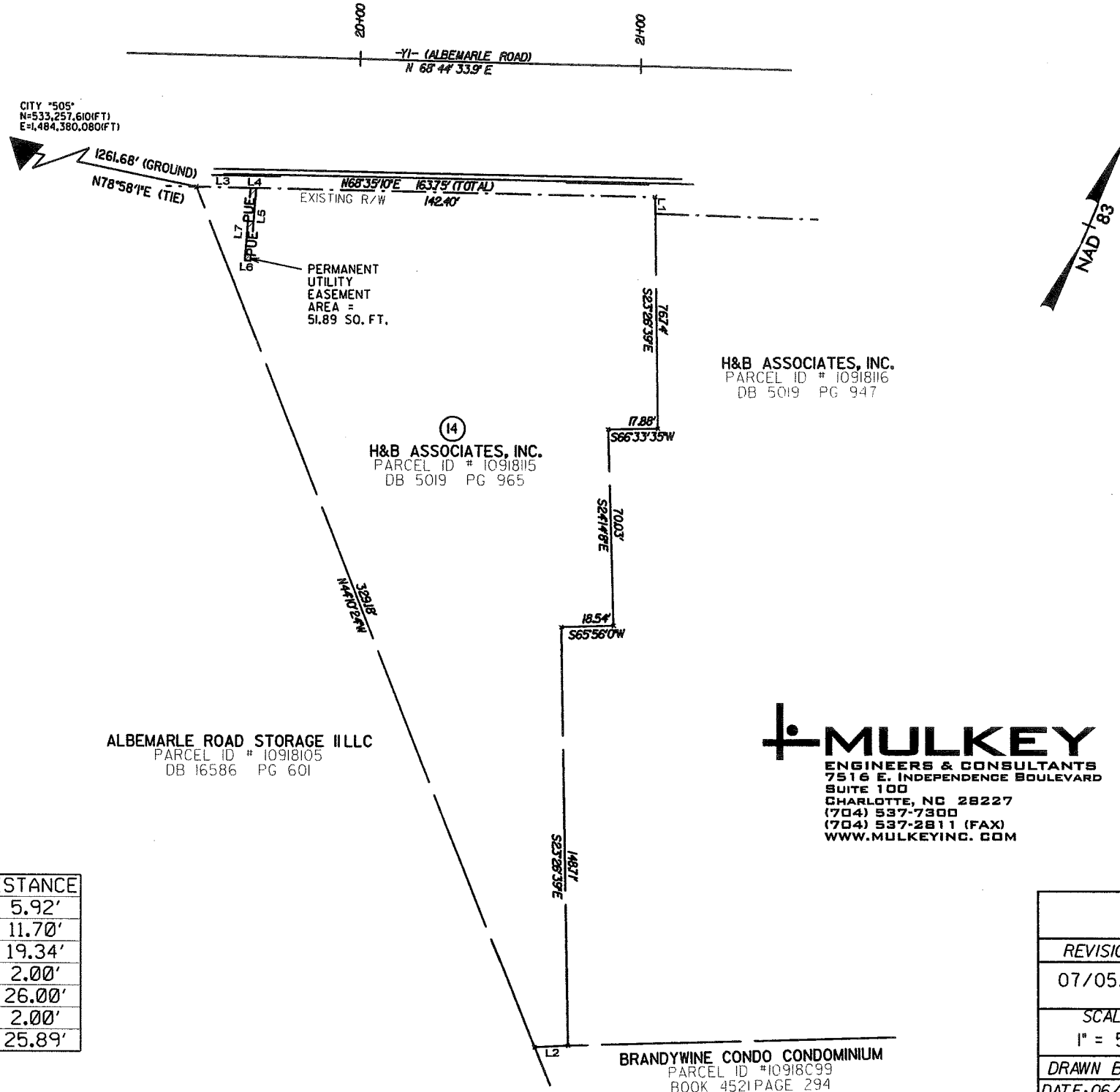


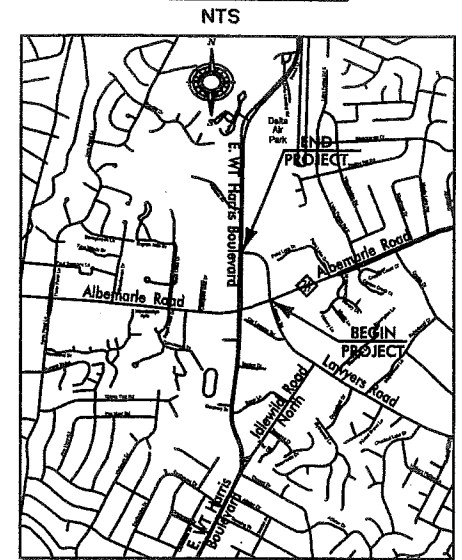
LEGEND

- E— TEMP. CONSTRUCTION EASEMENT
- PDE— STORM DRAINAGE EASEMENT
- PUE— UTILITY EASEMENT
- SIDEWALK & UTILITY EASEMENT
- EXIST. PROPERTY LINE
- PROP. R/W
- EXIST. R/W
- [Pattern] TEMP. CONSTRUCTION EASEMENT
- [Pattern] STORM DRAINAGE EASEMENT
- [Pattern] SIDEWALK & UTILITY EASEMENT
- [Pattern] PERMANENT UTILITY EASEMENT

CITY '50S'
N=533,257.610(FT)
E=1,484,380.080(FT)



VICINITY MAP



NOTES:

1. THIS MAP IS NOT A CERTIFIED SURVEY AND HAS NOT BEEN REVIEWED BY A LOCAL GOVERNMENT AGENCY FOR COMPLIANCE WITH ANY APPLICABLE LAND DEVELOPMENT REGULATIONS.
2. BEARINGS AND DISTANCES SHOWN IN PARENTHESES ARE BASED ON RECORDED MAP INFORMATION.
3. TOTAL AREA = 25,459.16 SQ. FT.
4. PERMANENT UTILITY EASEMENT = 51.89 SQ.FT.
5. AREA REMAINING = 25,459.16 SQ. FT.

ALBEMARLE ROAD STORAGE II LLC
PARCEL ID # 10918105
DB 16586 PG 601

H&B ASSOCIATES, INC.
PARCEL ID # 10918115
DB 5019 PG 965

H&B ASSOCIATES, INC.
PARCEL ID # 10918116
DB 5019 PG 947

MULKEY
ENGINEERS & CONSULTANTS
7516 E. INDEPENDENCE BOULEVARD
SUITE 100
CHARLOTTE, NC 28227
(704) 537-7300
(704) 537-2811 (FAX)
WWW.MULKEYINC.COM

0' 50' 100'



LINE TABLE

	BEARING	DISTANCE
L1	S23°26'39"E	5.92'
L2	S64°16'06"W	11.70'
L3	N68°35'10"E	19.34'
L4	N68°35'10"E	2.00'
L5	S18°16'13"E	26.00'
L6	S71°43'47"W	2.00'
L7	N18°16'13"W	25.89'

BRANDYWINE CONDO CONDOMINIUM
PARCEL ID #10918C99
BOOK 4521 PAGE 294

		JOB NO. 512-99-008
LAWYERS ROAD EXTENSION		
REVISIONS	PROPERTY ACQUISITION OWNER: H&B ASSOCIATES, INC.	FILE NO.
07/05/07		SHEET 1
SCALE 1" = 50'	CHARLOTTE, MECKLENBURG CO., NC	OF 1
DRAWN BY: CKD		DATE: 06/22/07
CHECKED BY: JDL II		SURVEY SUPVR.: JDL II

DB 23274 PG 668