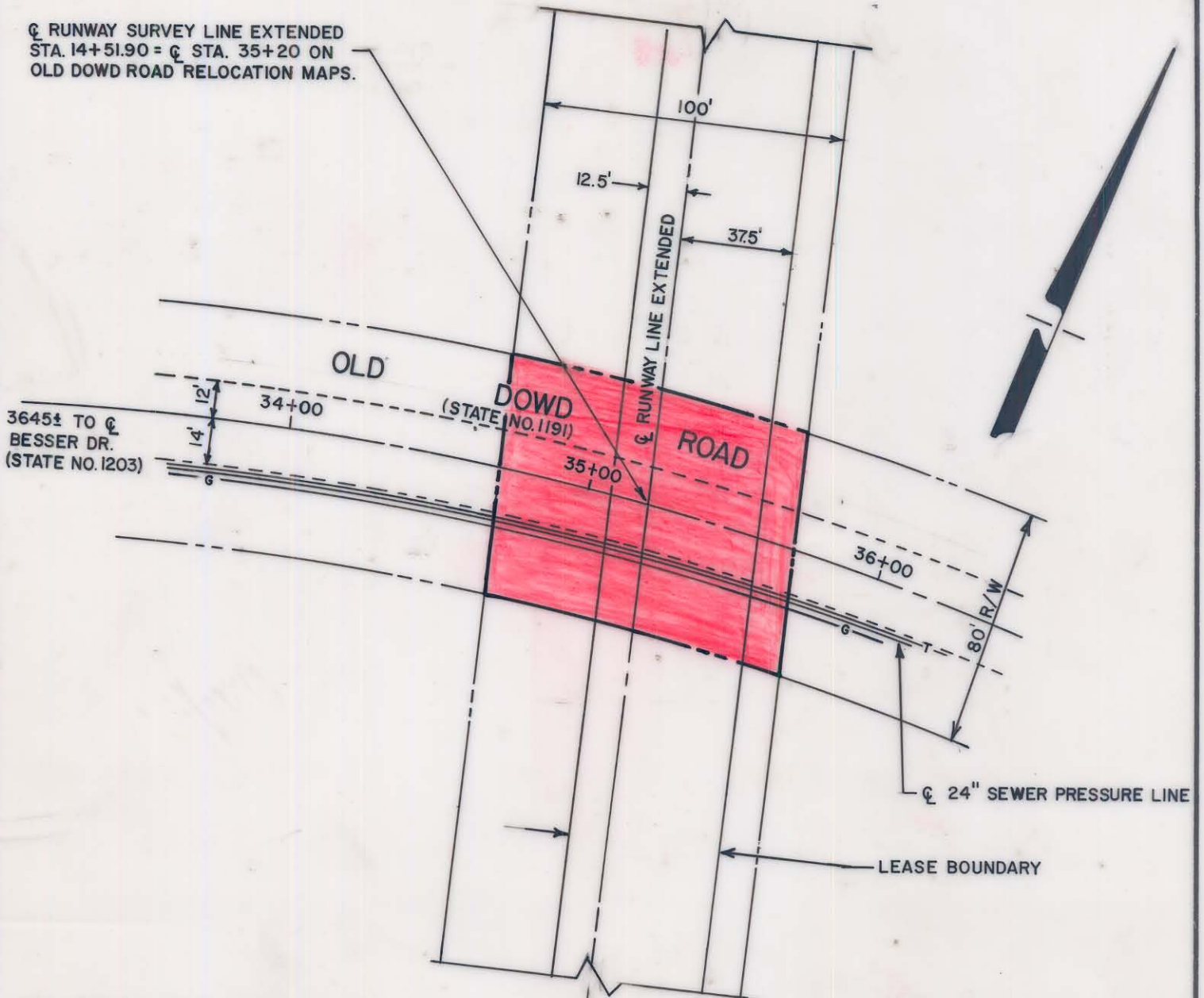
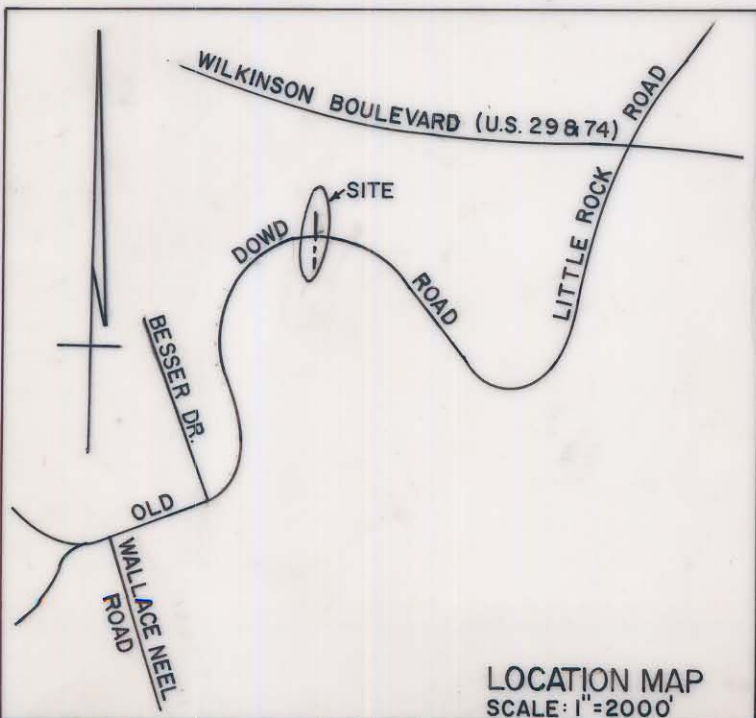
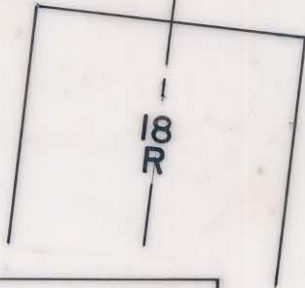


☉ RUNWAY SURVEY LINE EXTENDED  
 STA. 14+51.90 = ☉ STA. 35+20 ON  
 OLD DOWD ROAD RELOCATION MAPS.



1748.10' FROM END OF RUNWAY TO  
 INTERSECTION OF ☉ RUNWAY SURVEY  
 LINE EXTENDED WITH THE ☉ OF OLD  
 DOWD ROAD RELOCATED. (NOT TO SCALE).



CITY OF CHARLOTTE  
 NORTH CAROLINA  
 DEPARTMENT OF PUBLIC WORKS  
 ENGINEERING DIVISION

REVISIONS	FAA EASEMENT ON AIRPORT PROPERTY	JOB NO.
		FILE NO.
DRAWN BY A.R.	PROPOSED MALS/R SYSTEM ON D.O.T. R/W	SHEET 2
CHECKED BY [Signature]		OF 3
CITY ENGINEER	DATE 3/2/81	SCALE 1" = 50'

112-013-01