

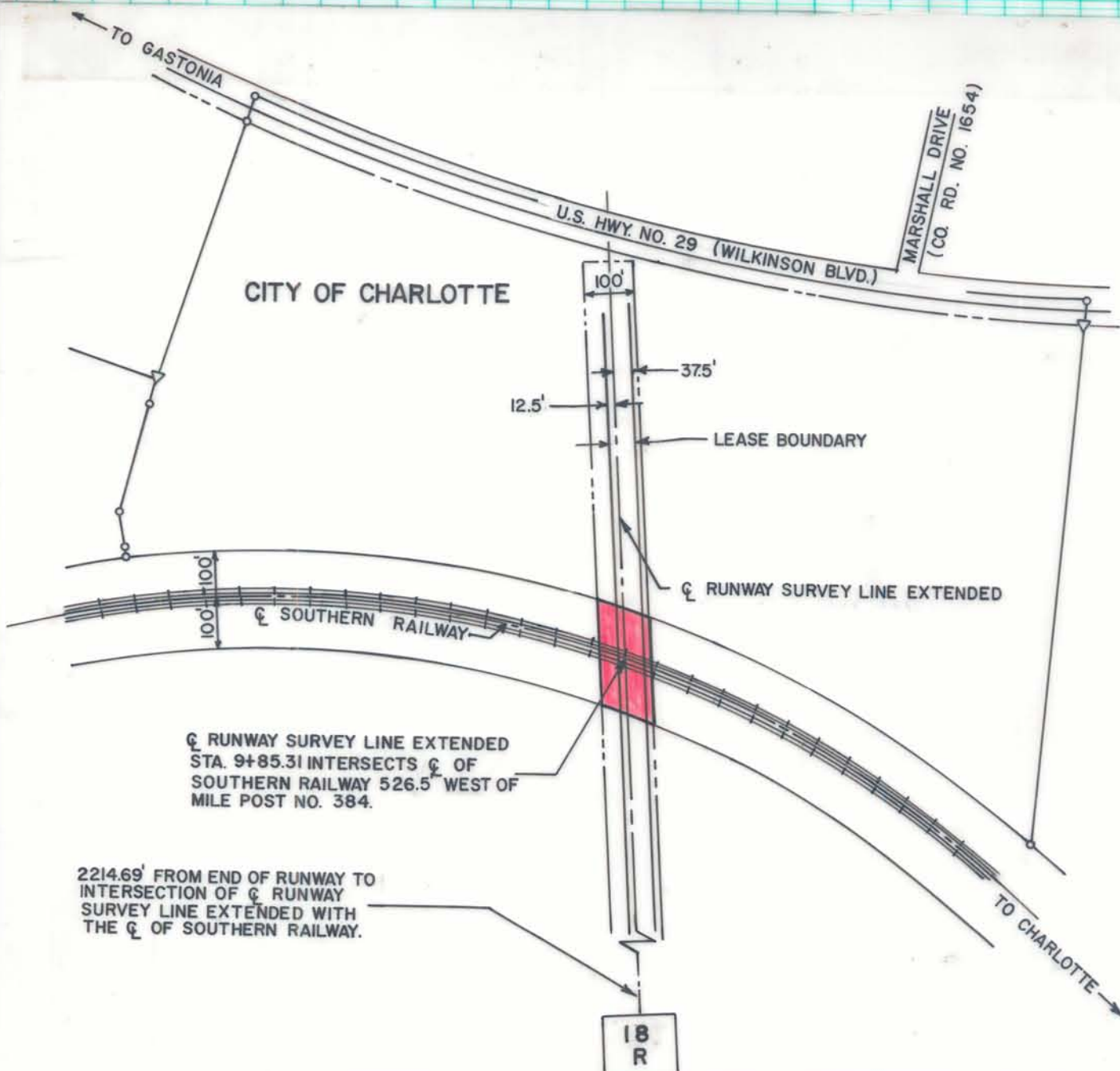
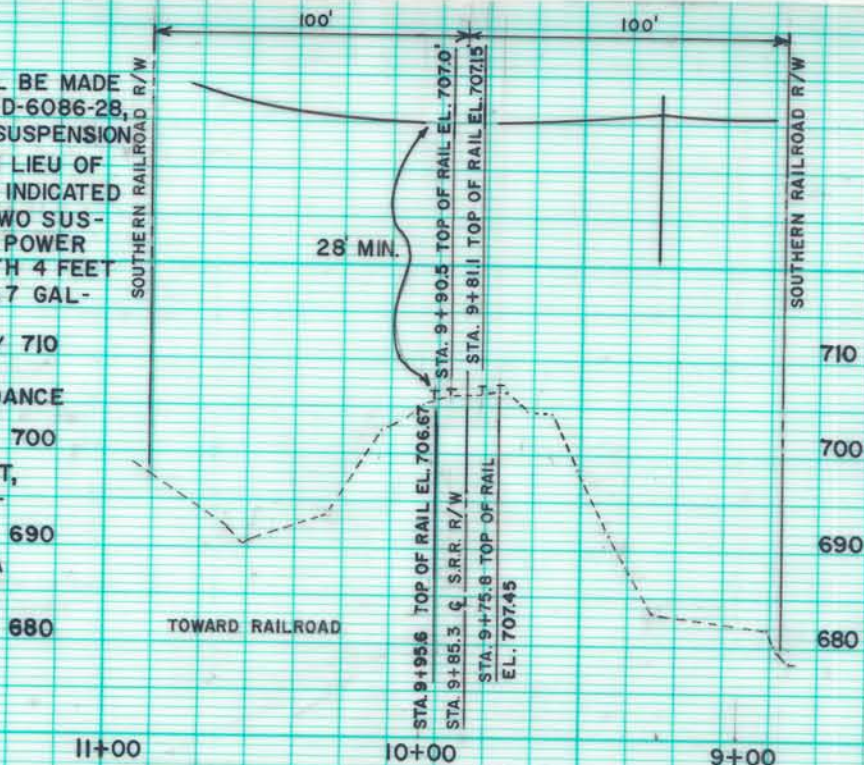
NOTES:

1. CABLE CONNECTIONS SHALL BE MADE IN ACCORDANCE WITH DWG. D-6086-2B, EXCEPT THAT, TWO 5/16" SUSPENSION CABLES SHALL BE USED IN LIEU OF THE SINGLE 1/2" CABLE AS INDICATED IN DWG. D-6086-2B. THE TWO SUSPENSION CABLES, ONE FOR POWER AND ONE FOR CONTROL WITH 4 FEET SEPARATION SHALL BE 6 x 7 GALVANIZED MONITOR STEEL RIGGING AND GUY ROPES BY 710 USS TIGER BRAND (OR APPROVED EQUAL), IN ACCORDANCE WITH THE SOUTHERN RAILROAD REGULATIONS, THE CABLES SHALL BE 28' FEET, OR MORE, ABOVE THE RAILROAD TRACK BED.

2. SEE ATTACHED COPY OF FAA PLAN AND PROFILE SHEET NO. 50-E-3117-5A.

PROFILE

SCALE: 1" = 60' HORIZONTAL
1" = 20' VERTICAL



Q RUNWAY SURVEY LINE EXTENDED STA. 9+85.31 INTERSECTS Q OF SOUTHERN RAILWAY 526.5' WEST OF MILE POST NO. 384.

2214.69' FROM END OF RUNWAY TO INTERSECTION OF Q RUNWAY SURVEY LINE EXTENDED WITH THE Q OF SOUTHERN RAILWAY.

18
R



CITY OF CHARLOTTE
NORTH CAROLINA
DEPARTMENT OF PUBLIC WORKS
ENGINEERING DIVISION

REVISIONS CHANGE CABLE LOCATION 7/27/81		FAA EASEMENT ON AIRPORT PROPERTY	JOB NO.
DRAWN BY AR CHECKED BY [Signature]			FILE NO.
CITY ENGINEER		PROPOSED MALS/R SYSTEM ON SOUTHERN RAILWAY R/W	SHEET 3 OF 3
		DATE 3/2/81 SCALE 1" = 300'	