

NOTES

1) BEARINGS AND DISTANCES SHOWN IN PARENTHESES ARE BASED ON RECORDED MAP INFORMATION.

2) TOTAL AREA 12,904 SQ. FT.

"I CERTIFY THAT THIS PLAT WAS DRAWN UNDER MY SUPERVISION FROM AN ACTUAL SURVEY MADE UNDER MY SUPERVISION. THAT THE DEEDS AND PLATS NOTED HEREON WERE USED AS REFERENCES. THAT THE BOUNDARIES NOT SURVEYED ARE INDICATED AND ARE DRAWN FROM INFORMATION AS SHOWN. THE RATIO OF PRECISION IS 1:10000, AND THAT THIS PLAT MEETS THE REQUIREMENTS OF THE STANDARDS OF PRACTICE FOR LAND SURVEYING IN NORTH CAROLINA (21 NCAC 56.1600). THE FIELD SURVEY WAS CONDUCTED MAY 21st, 2014.

David H. Snider
 DAVID H. SNIDER, NC P.L.S. L-2942 DATE



STATE OF NORTH CAROLINA
 COUNTY OF MECKLENBURG

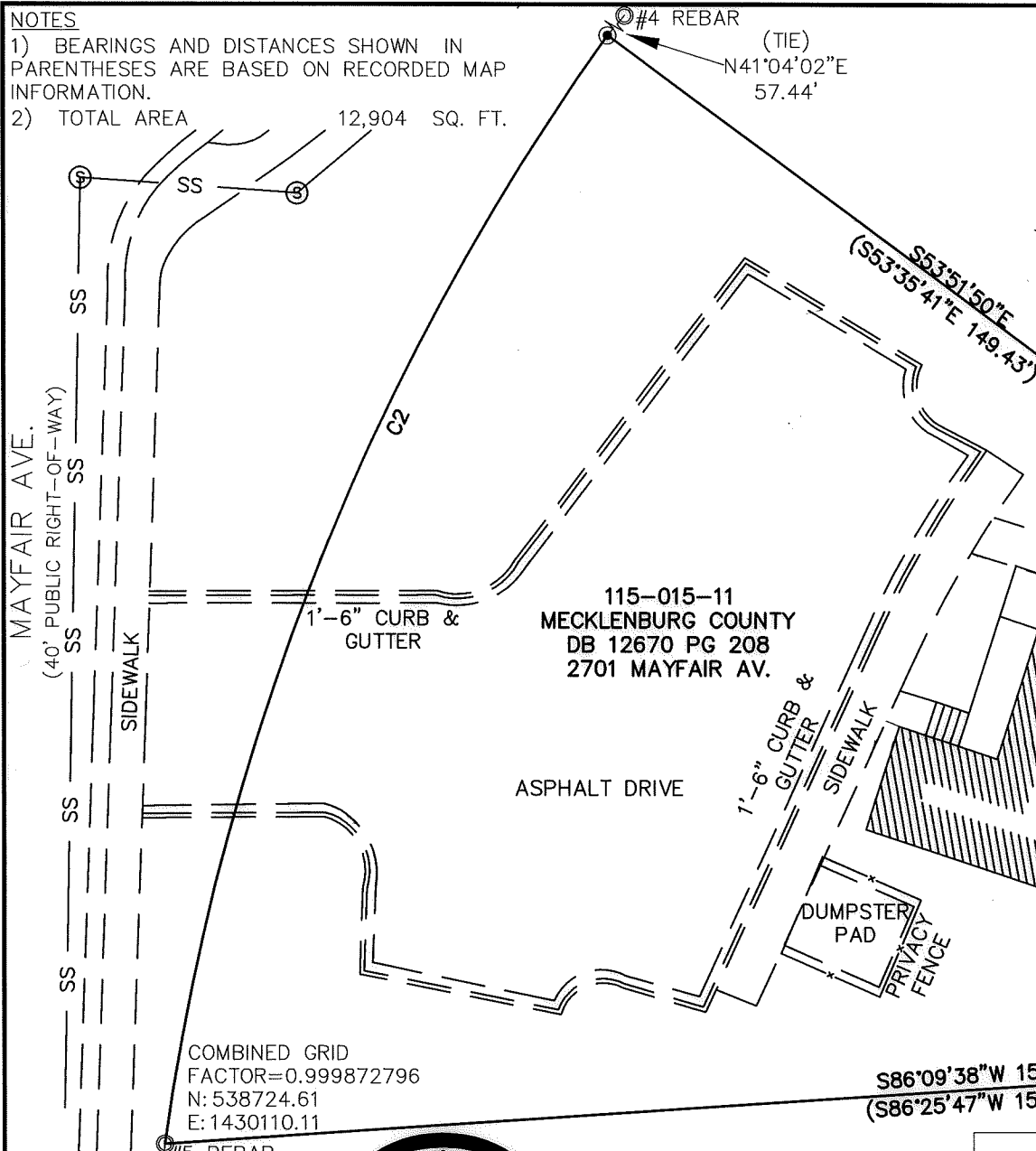
I, _____, REVIEW OFFICER OF MECKLENBURG COUNTY, CERTIFY THAT THE MAP OR PLAT TO WHICH THIS CERTIFICATION IS AFFIXED MEETS ALL STATUTORY REQUIREMENTS FOR RECORDING.

REVIEW OFFICER _____ DATE _____

115-015-22
 MUN KUEN CHIN 10813
 DB 24047 PG 520
 2753 WINGATE AVE.

LEGEND

- #5 CAP&REBAR SET ●
- #5 REBAR ○
- CALCULATED POINT •
- LINES SURVEYED _____
- LINES NOT SURVEYED - - - - -



115-015-11
 MECKLENBURG COUNTY
 DB 12670 PG 208
 2701 MAYFAIR AV.

ONE STORY
 VINYL SIDING
 BUILDING

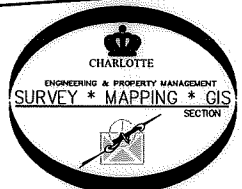
DUMPSTER
 PAD
 PRIVACY
 FENCE

COMBINED GRID
 FACTOR=0.999872796
 N: 538724.61
 E: 1430110.11

S86°09'38"W 157.17'
 (S86°25'47"W 156.63')

115-015-12
 MECKLENBURG COUNTY
 DB 12670 PG 208
 2707 MAYFAIR AVE.

PREPARED BY:
 CITY OF CHARLOTTE
 ENGINEERING DEPARTMENT
 600 EAST FOURTH STREET
 CHARLOTTE, NC 28202
 704-336-2291



Curve Table				
Curve #	Length	Radius	CHORD BEARING	CHORD
C1	32.87	136.57	S28°14'24"W	32.79
C2	138.95	286.57	S22°02'49"W	137.59

CHARLOTTE
 ENGINEERING DEPARTMENT

REVISIONS	2701 MAYFAIR AVENUE BOUNDARY SURVEY	JOB NO. 513-93-057
	CITY OF CHARLOTTE	393057
	CHARLOTTE, MECKLENBURG CO., NC	SHEET 1
	DRAWN BY P.S. CHECKED BY DS SURVEY SUPVR. <i>DS</i>	OF 1

K:\AutoCad\En_su-LD4\393057 Real Property Inventory MAYFAIR BOUNDARY\MAYFAIR BOUNDARY PLAT.dwg

DB 30857-949