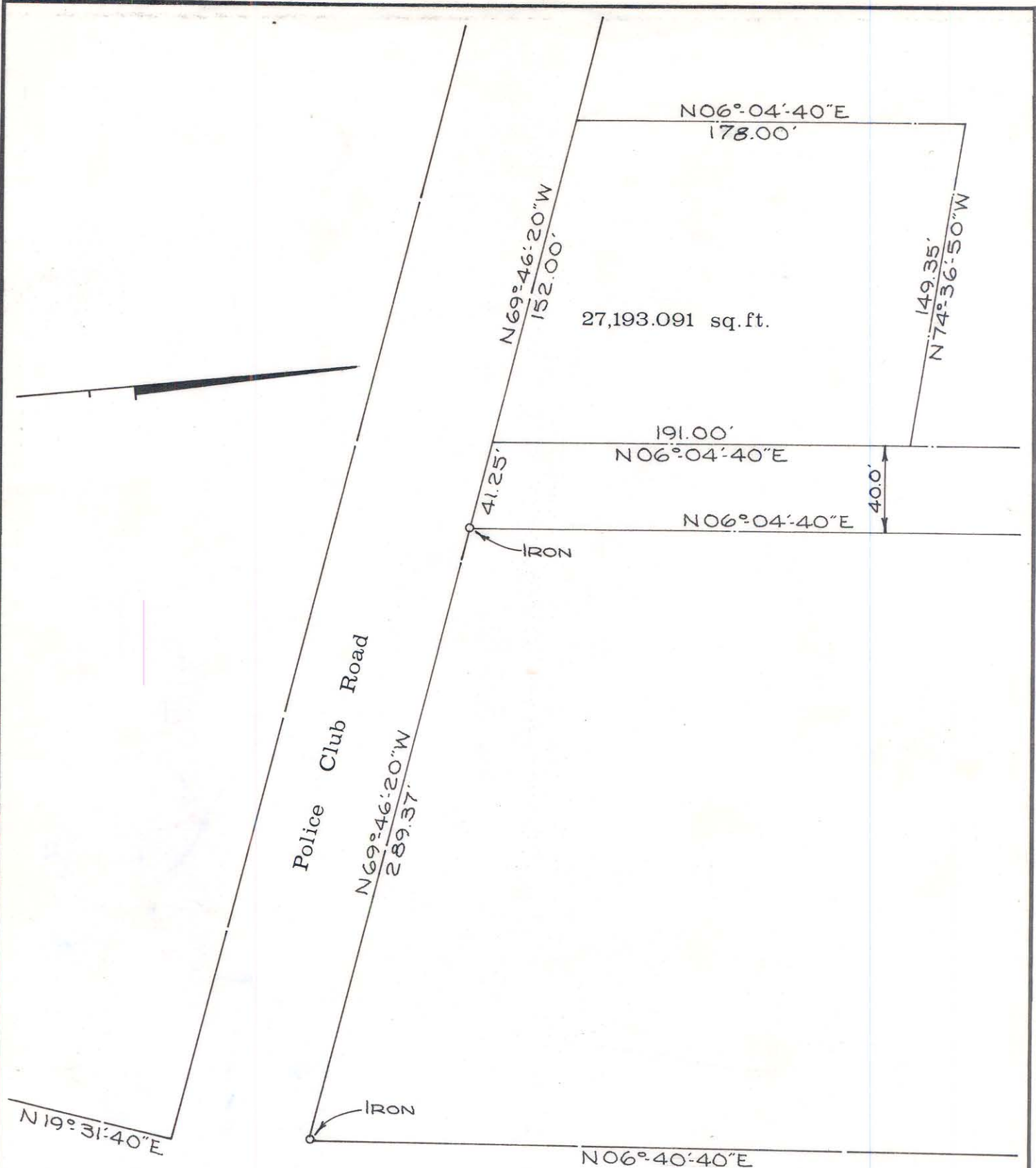


B-D K-91

B-D K-91



N 19° 31' 40" E

Police Club Road

N 69° 46' 20" W
289.37'

N 69° 46' 20" W
152.00'

N 06° 04' 40" E
178.00'

27,193.091 sq. ft.

149.35'
N 74° 36' 50" W

191.00'
N 06° 04' 40" E

N 06° 04' 40" E

400'

41.25'

IRON

IRON

N 06° 40' 40" E

to charlotte

Entrance Road To Terminal

Dixie Road

B-D K-91

B-D K-91

115

CITY OF CHARLOTTE NORTH CAROLINA ENGINEERING DEPARTMENT		
REVISIONS	Douglas Municipal Airport.	JOB NO.
		FILE NO.
DRAWN BY E.E.F.	map showing property to be leased for U. S. POST OFFICE	SHEET
CHECKED BY JTT		OF
CITY ENGINEER	DATE 4-68	SCALE 1" = 60'

115-21