

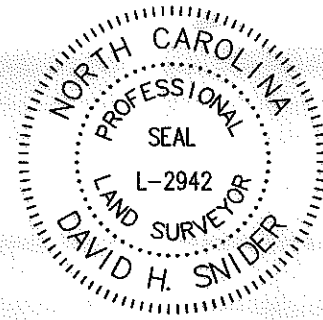
VICTOR MANUEL GUEVARA
TAX CODE: 117-022-20
DB 26379 PG 927

11

YORKIE REAL ESTATE, LLC
TAX CODE: 117-022-32
DB 27329 PG 507
1829 REMOUNT ROAD

I, DAVID H. SNIDER, CERTIFY THAT THIS PLAT WAS PREPARED UNDER MY SUPERVISION AND THAT THE PLAT WAS PREPARED FOR THE PURPOSE OF EASEMENTS ONLY, AND IS NOT INTENDED TO BE A BOUNDARY SURVEY OF PROPERTY SHOWN.

David H. Snider 11/11/13
DAVID H. SNIDER, NC P.L.S. L-2942 DATE



VICTOR MANUEL GUEVARA
TAX CODE: 117-022-88
DB 26379 PG 927

LEGEND

- IRON PIN FOUND
- CALCULATED POINT
- LINES SURVEYED
- LINES NOT SURVEYED
- TEMP. CONSTRUCTION EASEMENT
- SIDEWALK/UTILITY EASEMENT

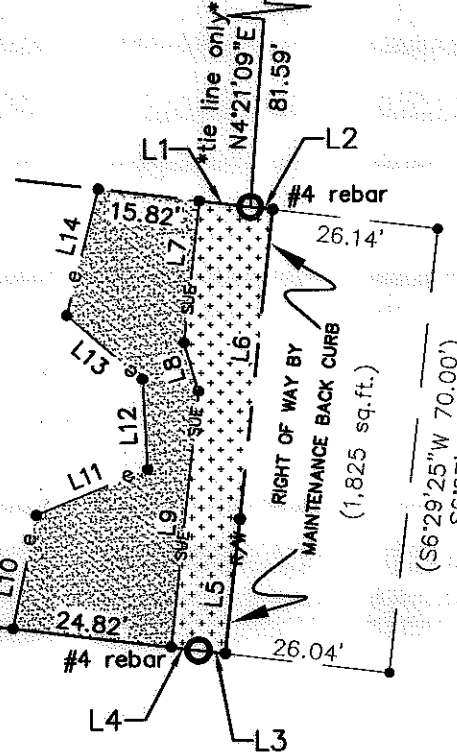
CLEVVETA WARD as TRUSTEE FOR THE
CLEVVETA WARD REVOCABLE LIVING TRUST
TAX CODE: 117-022-19
DB 27926 PG 523
1825 REMOUNT ROAD

10

S83°10'40"E
(S83°36'00"E 261.65')
208.10'

(S83°36'00"E 254.47')

sta. 9+47.93 -L-
33.81' LT.

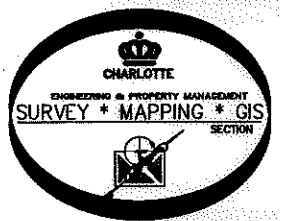


REMOUNT ROAD R/W VARIES

STATE OF NORTH CAROLINA
COUNTY OF MECKLENBURG
REVIEW OFFICER OF
MECKLENBURG COUNTY, CERTIFY THAT THE MAP
OR PLAT TO WHICH THIS CERTIFICATION IS AFFIXED
MEETS ALL STATUTORY REQUIREMENTS FOR RECORDING.

REVIEW OFFICER _____ DATE _____

NC GRID NAD 83(2007)



COMBINED GRID
FACTOR=0.99984337
N.540132.49
E.1437270.91

PREPARED BY:
CITY OF CHARLOTTE
ENGINEERING DEPARTMENT
600 EAST FOURTH STREET
CHARLOTTE, NC 28202
704-336-2291

Line #	Length	Direction
L1	8.01	N83°10'48"W
L2	3.59	N83°10'23"W
L3	4.16	S83°09'54"E
L4	4.28	S83°09'54"E
L5	21.21	N06°25'56"E
L6	48.79	N06°21'17"E
L7	22.39	N06°20'07"E
L8	7.92	N16°27'02"W
L9	40.33	N06°16'26"E
L10	18.15	N11°49'07"E
L11	18.72	N67°40'04"E

Line #	Length	Direction
L12	14.20	N02°58'46"W
L13	15.42	N49°32'02"W
L14	20.43	N14°11'10"E

9

SFRH CHARLOTTE RENTAL, LP
TAX CODE: 117-022-18
DB 27950 PG 409 (parcel 293)
1821 REMOUNT ROAD

NOTES:

- 1.) BEARINGS AND DISTANCES SHOWN IN PARENTHESES ARE BASED ON RECORDED MAP INFORMATION
- 2.) COMPUTED PROJECT DISTANCE _____*
- 3.) TOTAL AREA 18,058 SQ. FT.
- 4.) TEMP CONSTRUCTION EASEMENT 1,139 SQ. FT.
- 5.) SIDEWALK/UTILITY EASEMENT 675 SQ. FT.
- 6.) AREA REMAINING 18,058 SQ. FT.

		JOB NO. 512-11-040
CHARLOTTE ENGINEERING DEPARTMENT		211040
REMOUNT ROAD SIDEWALK		SHEET 1
PROPERTY OF CLEVVETA WARD as TRUSTEE FOR THE CLEVVETA WARD REVOCABLE LIVING TRUST CHARLOTTE, MECKLENBURG CO., NC		OF 1
REVISIONS	DRAWN BY G.F.	CHECKED BY DS SURVEY SUPVR. <i>DS</i>
DATE	K:\AutoCad\En_su-LD4\211040\PLAT MAPS CREATED IN C3D2012\Plat-10	

DB 29165-246