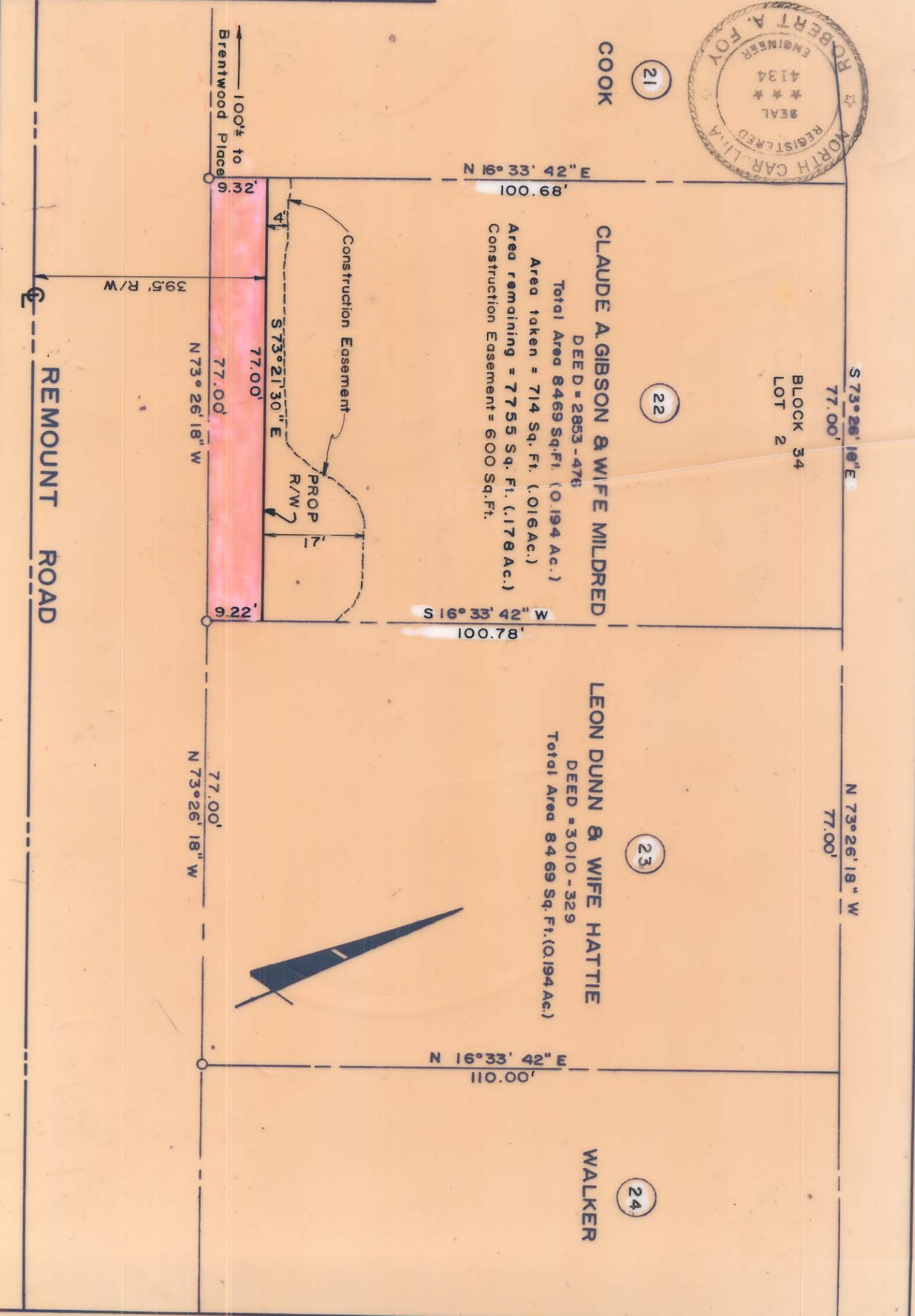


THIS PLAT WAS PREPARED UNDER MY SUPERVISION.  
*Robert A. Foy*  
 N. C. REG. ENGINEER NO. 4134



NOTE: PROPERTY CORNERS SHOWN CIRCLED WERE LOCATED BY ACTUAL SURVEY. BEARINGS ARE BASED ON NORTH CAROLINA GRID.

CITY OF CHARLOTTE DEPARTMENT OF PUBLIC WORKS ENGINEERING DIVISION		REVISIONS
PROPERTY OF <b>REMOUNT ROAD</b>		FILE NO.
DRAWN BY <i>W.S.A.</i>		SHEET
CHECKED BY <i>W.S.A.</i>		RW-86
DATE <i>June, 1974</i> SCALE 1" = 20'		OF
CITY ENGINEER <i>W.S.A.</i>		58



119-034-02