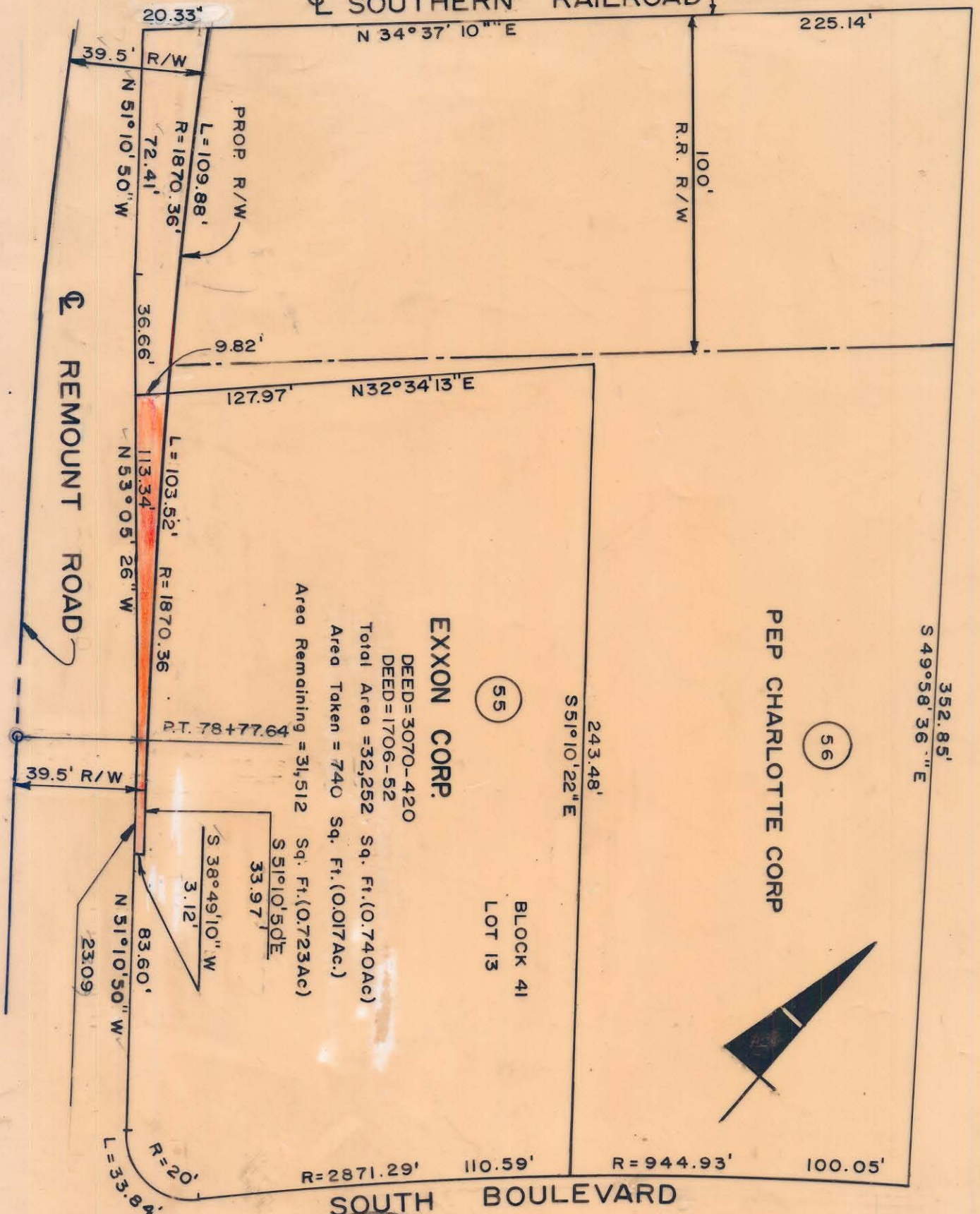


SOUTHERN RAILROAD



EXXON CORP.
 DEED=3070-420
 DEED=1706-52
 Total Area = 32,252 Sq. Ft. (0.740Ac)
 Area Taken = 740 Sq. Ft. (0.017Ac.)
 Area Remaining = 31,512 Sq. Ft. (0.723Ac)

PEP CHARLOTTE CORP.

BLOCK 41
 LOT 13



THIS PLAT WAS PREPARED UNDER MY SUPERVISION.
Robert A. Foy
 N. C. REG. ENGINEER NO. 4134

NOTE: PROPERTY CORNERS SHOWN CIRCLED WERE LOCATED BY ACTUAL SURVEY. BEARINGS ARE BASED ON NORTH CAROLINA GRID.

CITY OF CHARLOTTE NORTH CAROLINA DEPARTMENT OF PUBLIC WORKS ENGINEERING DIVISION		
REVISIONS Revised Prop. R/W 8/1/74 by WSA	REMOUNT ROAD	JOB NO.
DRAWN BY WSA		FILE NO. RW-86
CHECKED BY JSS	PROPERTY OF EXXON CORP	SHEET 55
CITY ENGINEER <i>W.S.A.</i>		OF 58
DATE June, 1974		SCALE 1" = 40'

121-041-13