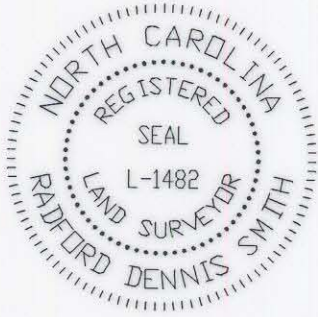


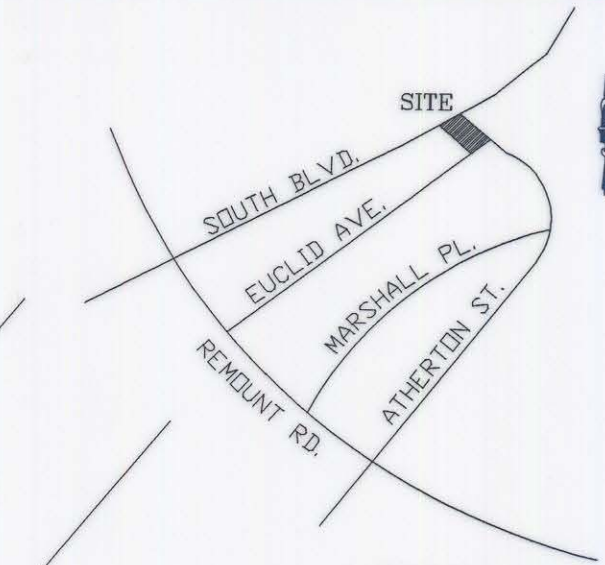
THIS PLAT WAS DONE UNDER MY SUPERVISION

R. Dennis Smith 7/25/93

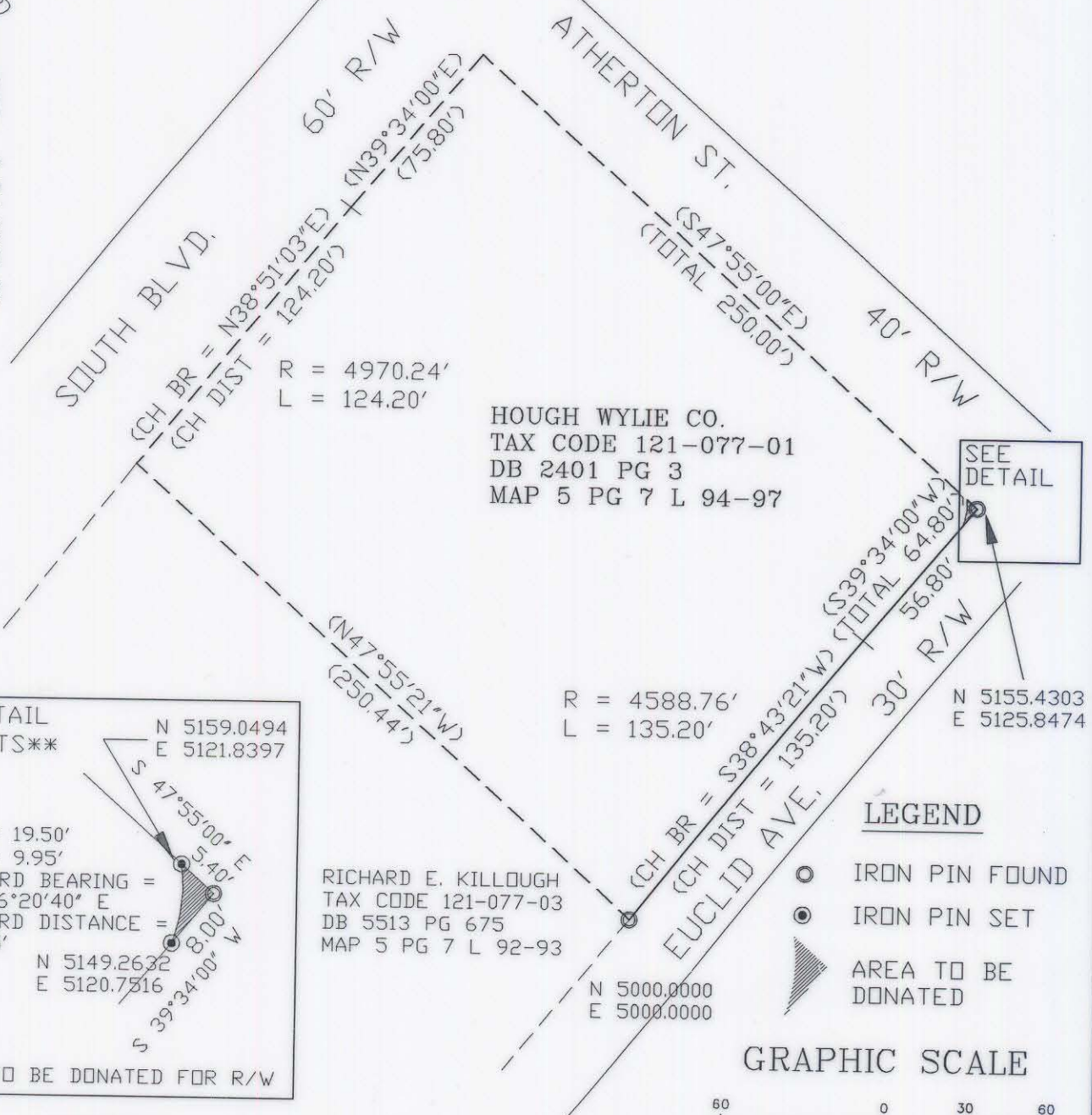
NC REG. LAND SURVEYOR NO. L-1482



DB 2401 PG 3

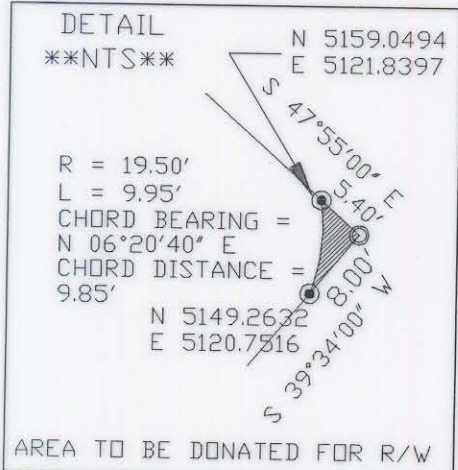


VICINITY MAP
NTS



HOUGH WYLIE CO.
TAX CODE 121-077-01
DB 2401 PG 3
MAP 5 PG 7 L 94-97

SEE
DETAIL



RICHARD E. KILLOUGH
TAX CODE 121-077-03
DB 5513 PG 675
MAP 5 PG 7 L 92-93

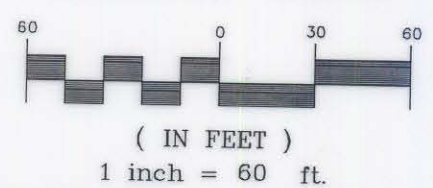
R = 4588.76'
L = 135.20'

N 5155.4303
E 5125.8474

LEGEND

- IRON PIN FOUND
- IRON PIN SET
- ▨ AREA TO BE DONATED

GRAPHIC SCALE



NOTES

- 1) AREA BY DEED 49,995 SQ. FT.
- 2) AREA TO BE DONATED 17 SQ. FT.
- 3) AREA REMAINING 49,978 SQ. FT.
- 4) DASHED LINES INDICATE PROPERTY NOT SURVEYED
- 5) BEARINGS AND DISTANCES SHOWN IN PARENTHESES ARE BASED ON DEED INFORMATION

PREPARED BY:
CITY OF CHARLOTTE
ENGINEERING DEPARTMENT
600 EAST FOURTH STREET
CHARLOTTE, NC 28202
704-336-2291

CHARLOTTE ENGINEERING DEPARTMENT		
REVISIONS	RIGHT-OF-WAY DONATION	JOB NO. 30101
	PROPERTY OF HOUGH WYLIE CO.	FILE NO. TOCO
DRAWN BY <i>DB</i>	CHARLOTTE, MECKLENBURG COUNTY, NC	SHEET 1
CHECKED BY <i>DHS</i>	DATE 7-13-93	OF 1
SURVEY SUPERV. <i>RDS</i>	SCALE 1"=60'	

DB 2401 PG 3
121-077-01/12-1-07