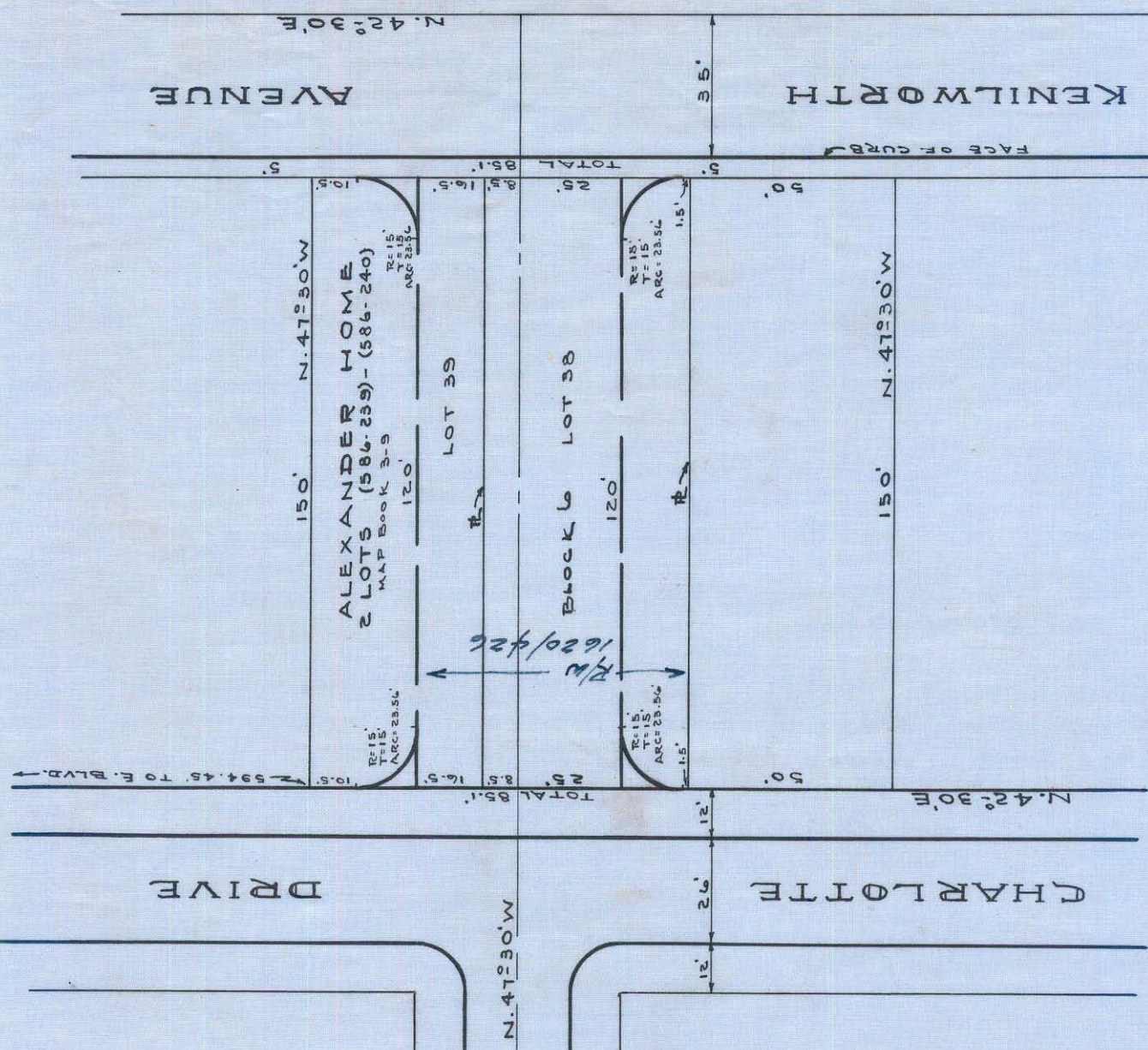


121-12

A-7-F-5

1060 #3



MAP SHOWING
 PROPOSED EXTENSION
 OF
IDEAL WAY
 FROM
 CHARLOTTE DR. TO KENILWORTH AVE.
 CHARLOTTE, N.C.
 OFFICE OF CITY ENGINEER
 SCALE 1"=40' FEB. 3, 1953
 BOOK D-P

DRIVE

CHARLOTTE

AVENUE

KENILWORTH

IDEAL WAY

ALEXANDER HOME
2 LOTS
(586-239) - (586-240)
MAP BOOK 3-9

Block 6 Lot 38

LOT 39

R/W 1620/426

N. 47° 30' W

N. 47° 30' W

N. 42° 30' E

N. 42° 30' E

FACE OF CURB

TOTAL

TOTAL

12' 12' 12'

12' 26' 12'

35'

150'

120'

120'

150'

R=15'
T=15'
ARC=23.56'

R=15'
T=15'
ARC=23.56'

1599 + 45' TO F. BLVD.