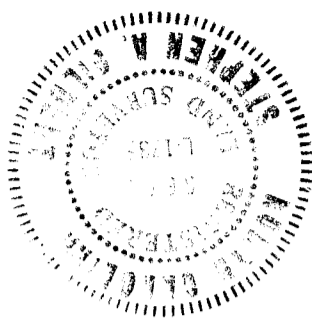
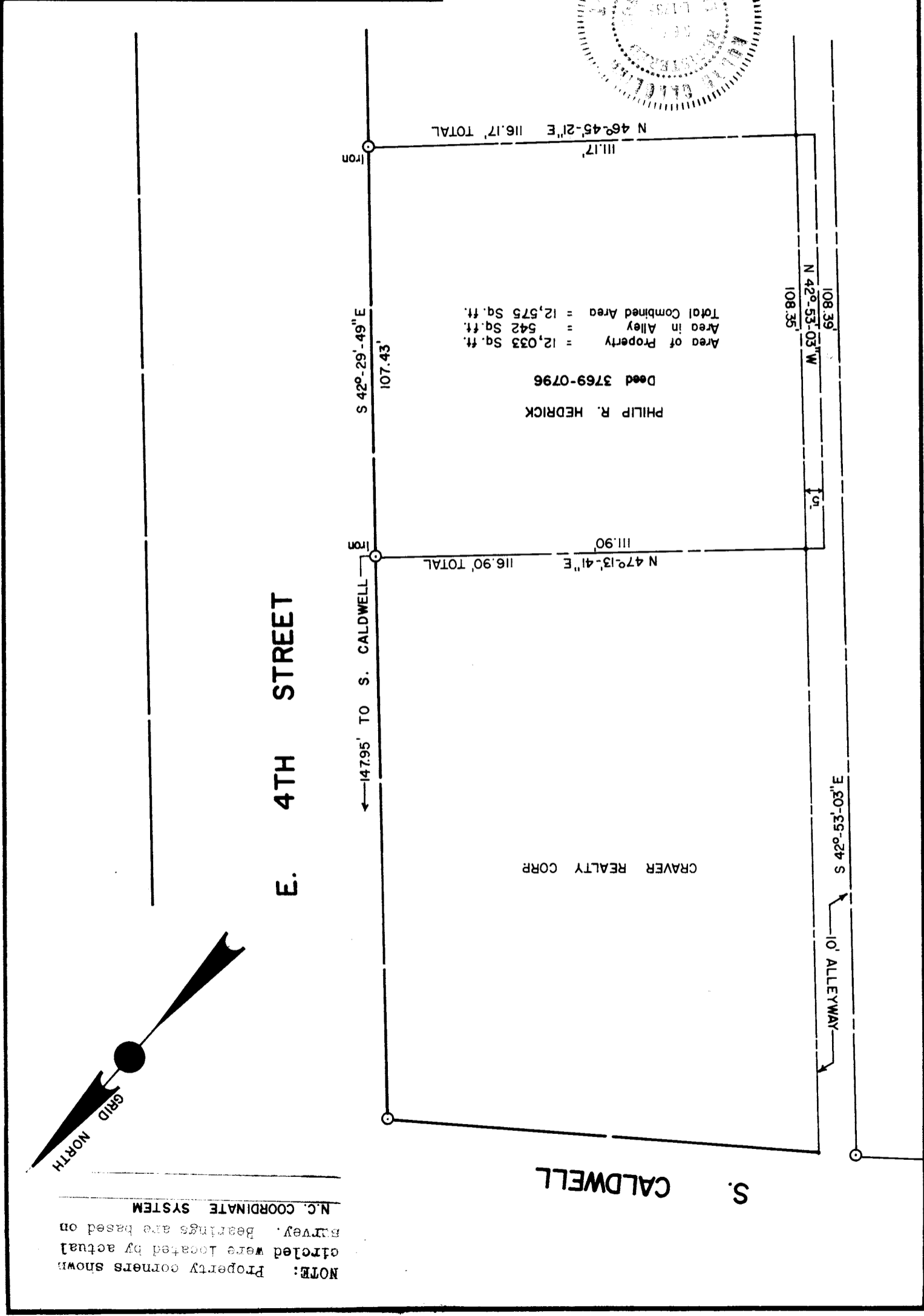


The plat was prepared under my
Stephen A. Fildes
 Surveyor No. E-1785



CITY OF CHARLOTTE DEPARTMENT OF PUBLIC WORKS ENGINEERING DIVISION		REVISIONS
PROPERTY TO BE ACQUIRED BY	PROPERTY OF	
FILE NO.	CITY OF CHARLOTTE	
SHEET	PHILIP R. HEDRICK	
OF		
	DATE 4-12-79	CITY ENGINEER
	SCALE 1" = 30'	CHECKED BY 56
		DRAWN BY CCM



NOTE: Property corners shown circled were located by actual survey. Bearings are based on N.C. COORDINATE SYSTEM

CITY OF CHARLOTTE
 DEPARTMENT OF PUBLIC WORKS
 ENGINEERING DIVISION