

DODD, INC. % VINSON REALTY

FRANK H. CONNOR CO.

CLYDE R. MITCHELL, JR.

MOORE INVESTMENT

VINSON REALTY

c/o

DR. GEORGE R. ARMSTRONG D.V.M.

TOTAL AREA	33,999.37	sq. ft.	.781	ac.
AREA TAKEN (1)	12,081.22	sq. ft.	.277	ac.
AREA TAKEN (2)	212.32	sq. ft.	.005	ac.
AREA REMAINING LEFT	12,724.22	sq. ft.	.292	ac.
AREA REMAINING RIGHT	8,981.61	sq. ft.	.206	ac.

**NOTE: PROPERTY CORNERS SHOWN CIRCLED**  
 WERE LOCATED BY ACTUAL SURVEY.  
 BEARINGS ARE BASED ON NORTH  
 CAROLINA COORDINATE SYSTEM.  
 THIS PLAT WAS PREPARED UNDER MY  
 SUPERVISION.

*Stephen A. Gilbert, P.E.*  
 N.C. REG. ENGINEER NO. 6233

RALPH WHITEHEAD & ASSOCIATES

CONSULTING ENGINEERS CHARLOTTE, N. C.

CITY OF CHARLOTTE PROJECT NO. 513-67-132

PROPOSED R/W

KINGS DRIVE RELOCATION

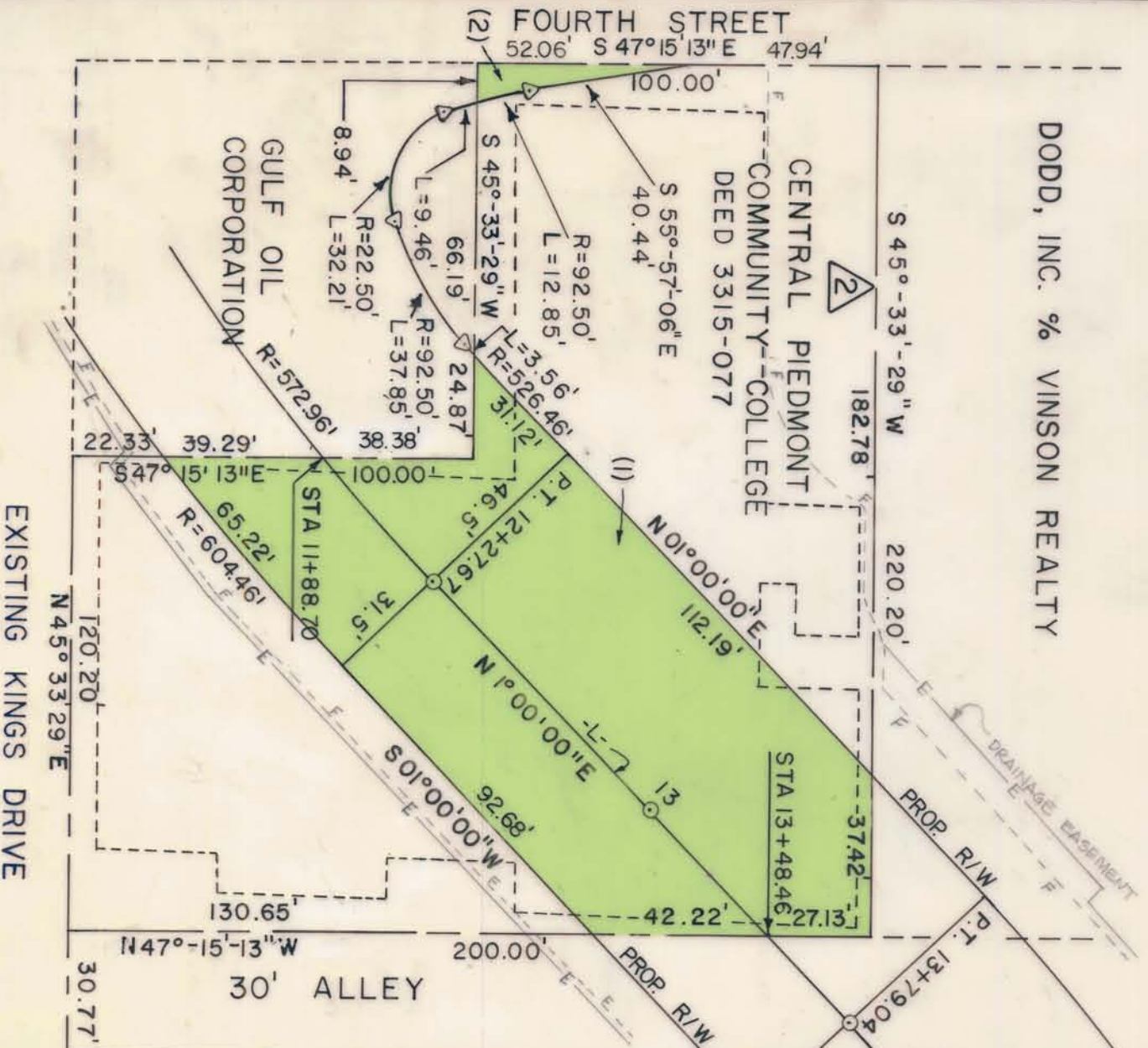
PROPERTY OF

CENTRAL PIEDMONT COMMUNITY COLLEGE

DRAWN BY W.N.C. DATE 5-6-74 DWG. NO.

CHECKED BY J.W.C. S.A.G. DATE 5-6-74 1202.56-P

SCALE 1" = 40' SHEET 2 OF 21



FOURTH STREET  
 52.06' S 47°15'13" E 47.94'  
 100.00'  
 S 45°-33'-29" W 182.78'  
 220.20'  
 S 55°-57'-06" E 40.44'  
 R=92.50' L=12.85'  
 R=526.46' L=3.56'  
 R=92.50' L=9.46'  
 R=92.50' L=37.85'  
 R=572.96'  
 8.94' L=32.21'  
 66.19'  
 24.87'  
 31.12'  
 31.5'  
 12+27.67'  
 46.5'  
 100.00'  
 S 47° 15' 13" E  
 65.22'  
 R=604.46'  
 120.20'  
 N 45° 33' 29" E  
 130.65'  
 200.00'  
 N 47°-15'-13" W  
 30.77'  
 30' ALLEY  
 112.19'  
 N 01°00'00"E  
 92.68'  
 501°00'00"W  
 42.22'  
 27.13'  
 STA 13+48.46  
 -37.42'  
 PROP. R/W  
 T. 13+79.04'  
 14'  
 MOORE INVESTMENT  
 CLYDE R. MITCHELL, JR.  
 FRANK H. CONNOR CO.  
 VINSON REALTY  
 c/o  
 DR. GEORGE R. ARMSTRONG D.V.M.  
 DODD, INC. % VINSON REALTY  
 CENTRAL PIEDMONT COMMUNITY COLLEGE DEED 3315-077  
 S 45°-33'-29" W 182.78'  
 220.20'  
 S 55°-57'-06" E 40.44'  
 R=92.50' L=12.85'  
 R=526.46' L=3.56'  
 R=92.50' L=9.46'  
 R=92.50' L=37.85'  
 R=572.96'  
 8.94' L=32.21'  
 66.19'  
 24.87'  
 31.12'  
 31.5'  
 12+27.67'  
 46.5'  
 100.00'  
 S 47° 15' 13" E  
 65.22'  
 R=604.46'  
 120.20'  
 N 45° 33' 29" E  
 130.65'  
 200.00'  
 N 47°-15'-13" W  
 30.77'  
 30' ALLEY  
 112.19'  
 N 01°00'00"E  
 92.68'  
 501°00'00"W  
 42.22'  
 27.13'  
 STA 13+48.46  
 -37.42'  
 PROP. R/W  
 T. 13+79.04'  
 14'  
 MOORE INVESTMENT  
 CLYDE R. MITCHELL, JR.  
 FRANK H. CONNOR CO.  
 VINSON REALTY  
 c/o  
 DR. GEORGE R. ARMSTRONG D.V.M.

REVISED 7-25-74 S.A.G.



125-095-03