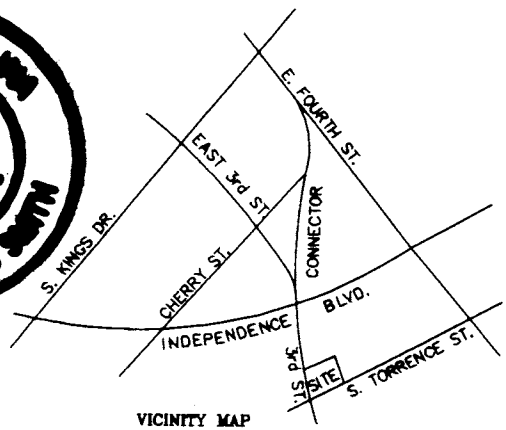
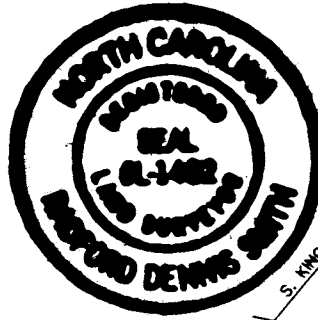


THIS PLAT WAS PREPARED UNDER MY SUPERVISION

*R. Dennis Brual* 2-2-93

N.C. REG. LAND SURVEYOR NO. L-1482



VICINITY MAP  
\*\*NTS\*\*

SARAH TALBOT  
TAX CODE 125-104-04  
DB 5281 PG 572

DORSEY INC.  
TAX CODE 125-104-02  
DB 1801 PG 127

GEORGE TALBOT  
TAX CODE 125-104-7  
DB 5199 PG 539

ALLEN BOONE  
TAX CODE 125-104-15  
DB 4528 PG 147



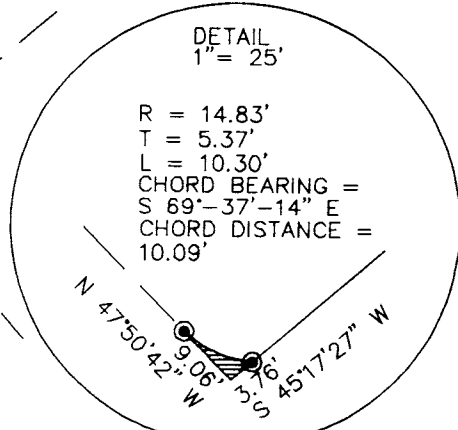
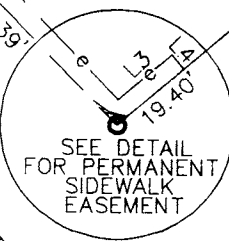
LINE TABLE FOR CONSTRUCTION EASEMENT

LINE	DIRECTION	DISTANCE
L1	N 42°09'18" E	5.00'
L2	S 47°50'42" E	102.72'
L3	N 45°17'27" E	18.42'
L4	S 44°42'33" E	5.00'

R = 315.05'  
T = 42.63'  
L = 84.74'  
CHORD BEARING =  
S 40°-08'-20" E  
CHORD DISTANCE =  
84.48'

EAST THIRD ST.  
60' R/W

S. TORRENCE ST.  
60' R/W



THIS PLAT WAS PREPARED FOR THE PURPOSE OF ACQUISITION ONLY, AND IS NOT INTENDED TO BE A BOUNDARY SURVEY OF PROPERTY SHOWN.

NOTES

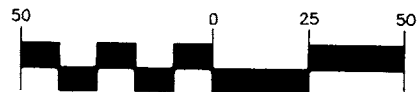
- 1) BEARINGS AND DISTANCES SHOWN IN PARENTHESES ARE BASED ON DEED INFORMATION.
- 2) BROKEN LINES INDICATE PROPERTY NOT SURVEYED.
- 3) TOTAL AREA BY DEED 31,927 SQ. FT.
- 4) AREA OF PERMANANT SIDEWALK EASEMENT. 11 SQ. FT.
- 5) AREA REMAINING 31,916 SQ. FT.
- 6) AREA OF TEMPORARY CONSTRUCTION EASEMENT. 630 SQ. FT.

LEGEND

- IRON PIN FOUND
- IRON PIN SET
- e — CONSTRUCTION EASEMENT

PREPARED BY:  
CITY OF CHARLOTTE  
ENGINEERING DEPARTMENT  
600 EAST FOURTH STREET  
CHARLOTTE, NC 28202  
704-336-2291

GRAPHIC SCALE



( IN FEET )

1 inch = 50 ft.

CHARLOTTE ENGINEERING DEPARTMENT		
REVISIONS	SIDEWALKS FY93	JOB NO. 93038
	PROPERTY OF <b>GEORGE TALBOT</b>	FILE NO.
DRAWN BY <i>db</i>	CHARLOTTE, MECKLENBURG CO., NC	INDEPEN
CHECKED BY <i>RDB</i>	DATE 1-12-93	SHEET 1
SURV. SUPVR.	SCALE 1"=50'	OF 1

R/W - DB 7210 PG 574

125-10