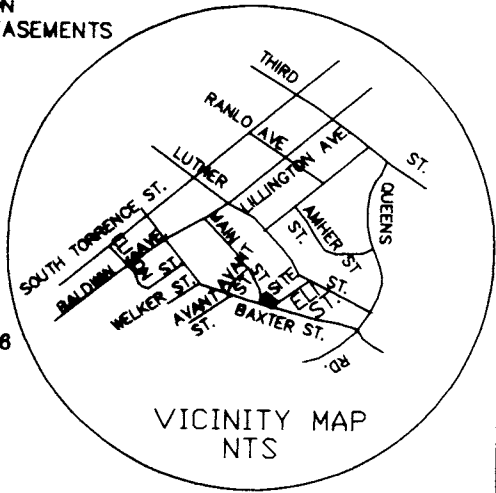
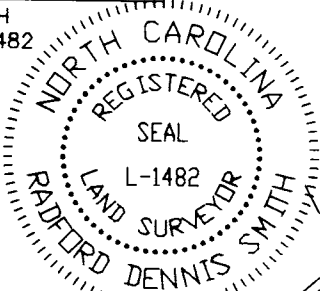


I, R. DENNIS SMITH, CERTIFY THAT THIS PLAT WAS DRAWN UNDER MY SUPERVISION AND THAT THE PLAT WAS PREPARED FOR THE PURPOSE OF ACQUISITION FOR EASEMENTS ONLY, AND IS NOT INTENDED TO BE A BOUNDARY OF THE PROPERTY SHOWN.

R. Dennis Smith 2-15-95

R. DENNIS SMITH
N.C.R.L.S. L-1482



CHERRY COMMUNITY
TAX CODE 125-234-17
DB 4275 PG 747

CITY OF CHARLOTTE
TAX CODE 125-234-18
DB 4704 PG 877

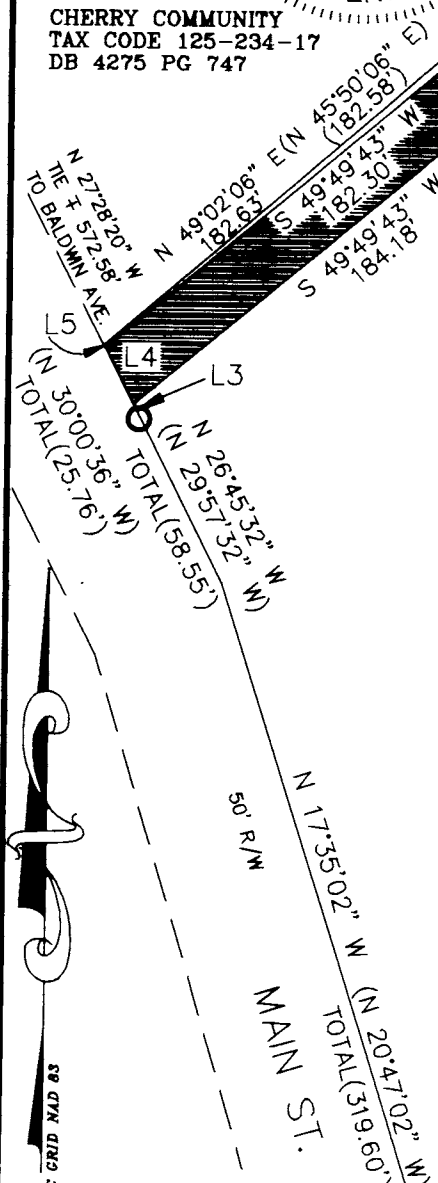
MRS INEZ THOMAS BARNES
TAX CODE 125-234-15
DB 000 PG 000

PROVIDENCE DAY SCHOOL INC.
TAX CODE 125-234-14
DB 6418 PG 853

ROBERT L. REID
TAX CODE 125-234-13
DB 4511 PG 933

9
CITY OF CHARLOTTE
TAX CODE 125-234-10
DB 4144 PG 448

CITY OF CHARLOTTE
TAX CODE 125-234-11
DB 4704 PG 877



LEGEND:

- IRON SET
- IRON FOUND
- ⊖ PERMANENT DRAINAGE EASEMENT
- ⊕ AREA ACQUIRED
- ⊗ TEMPORARY CONSTRUCTION EASEMENT

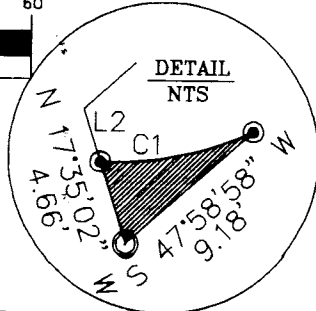
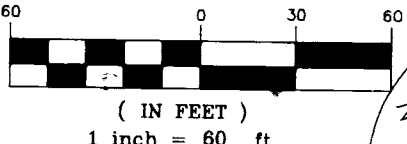
LINE	DIRECTION	DISTANCE
L1	N 32°05'02" W	5.08'
L2	N 17°35'02" W	0.83'
L3	N 26°48'36" W	4.68'
L4	S 26°48'36" E	20.56'
L5	N 26°48'36" W	0.52'
L6	S 31°59'56" E	3.07'
L7	S 31°59'56" E	20.21'
L8	S 31°59'56" E	1.53'

NOTES:

- TOTAL AREA BY DEED = 82,324 SQ. FT.
PERMANENT DRAINAGE EASEMENT = 3,665 SQ. FT.
AREA ACQUIRED = 17 SQ. FT.
AREA REMAINING = 78,642 SQ. FT.
TEMPORARY CONSTRUCTION EASEMENT = 1,337 SQ. FT.
- BEARINGS AND DISTANCES SHOWN IN PARENTHESES ARE BASED ON A BOUNDARY SURVEY FOR THE CITY OF CHARLOTTE DATED OCT. 14, 1983.

CURVE	RADIUS	LENGTH	CHORD	BEARING
C1	17.50'	8.43'	8.40'	S 78°17'06" W

GRAPHIC SCALE



PREPARED BY:
CITY OF CHARLOTTE
ENGINEERING DEPARTMENT
600 EAST FOURTH STREET
CHARLOTTE, NC 28202
704-336-2291

CHARLOTTE ENGINEERING DEPARTMENT		
REVISIONS	IMPROVEMENTS TO CHERRY COMMUNITY PHASE II STORM DRAINAGE	JOB NO. (94706) 671-947-06
DRAWN BY N. COKER	PROPERTY OF CITY OF CHARLOTTE	FILE NO.
CHECKED BY	CHARLOTTE, MECK., CO., N.C.	PLAT-10
SURVEY SUPR.	DATE 2-95	SHEET 1
	SCALE 1"=60'	OF 1