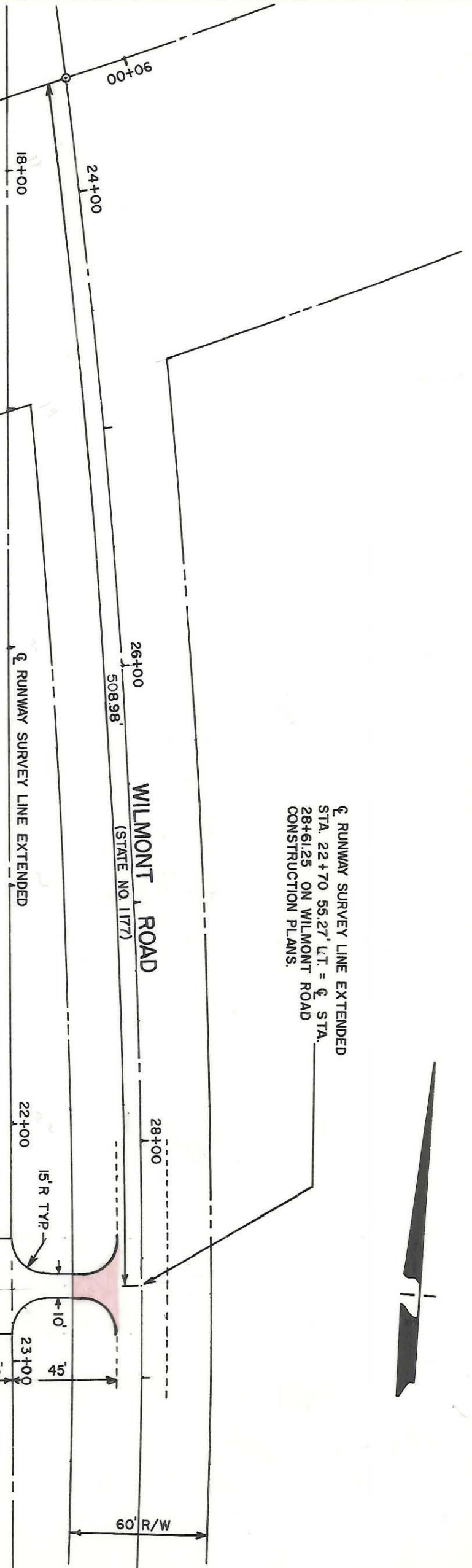
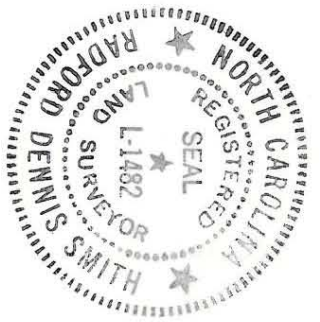


89+00 PROPOSED STATE HWY. 160



☑ RUNWAY SURVEY LINE EXTENDED  
 STA. 22+70 56.27' L.T. = ☑ STA.  
 28+61.25 ON WILMONT ROAD  
 CONSTRUCTION PLANS.



CITY OF CHARLOTTE NORTH CAROLINA DEPARTMENT OF PUBLIC WORKS ENGINEERING DIVISION		JOB NO. 514-87 -1/21
REVISIONS	PROPOSED RAIL ACCESS ROAD	FILE NO.
DRAWN BY AR	DATE 8/11/81	SCALE 1" = 50'
CHECKED BY <i>DS</i>	CITY ENGINEER	SHEET 5 OF 5

141-014