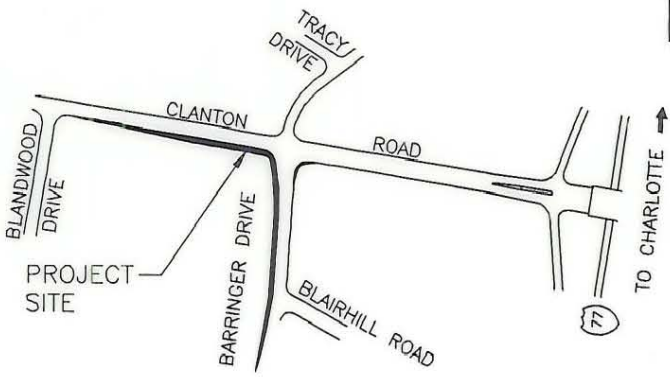


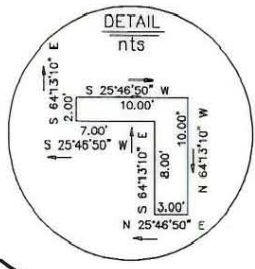
VICINITY MAP
nts



THIS PLAT WAS PREPARED UNDER MY SUPERVISION.

R. Dennis Smith 5/18/93

R. DENNIS SMITH, NCRLS L-1482 DATE



BARRINGER DR. 50' R/W

CLANTON ROAD 50' R/W

T.P. MOORE
DB 5007 PG 847
TAX CODE
145-071-14

M. RIGGSBEE
DB 3010 PG 438
TAX CODE
145-071-15

CHORD BEARING
S 43°44'51" W
123.22'
(R = 199.70')
L = 125.26'

GUY WIRE
EASE.
SEE DETAIL

EMMA H. TUCK
DB 3577 PG 138
TAX CODE
145-071-13

R.L. JONES
DB 2966 PG 137
TAX CODE
145-071-12

NOTES:

- BEARING AND DISTANCES SHOWN IN PARENTHESES ARE BASED ON DEED INFORMATION.
TOTAL AREA BY DEED 13,393 S.F.
AREA FOR GUY WIRE EASE. 44 S.F.
AREA REMAINING 13,349 S.F.

LEGEND

IRON PIN FOUND •



THIS PLAT WAS PREPARED FOR THE PURPOSE OF A UTILITY (GUY WIRE) EASEMENT ONLY, AND IS NOT INTENDED TO BE A BOUNDARY SURVEY OF THE PROPERTY SHOWN.

PREPARED BY:
CITY OF CHARLOTTE
ENGINEERING DEPARTMENT
600 EAST FOURTH STREET
CHARLOTTE, NC 28202
704-336-2291

		CHARLOTTE ENGINEERING DEPARTMENT	
REVISIONS		BARRINGER/CLANTON MINOR INTERSECTION IMPROVEMENTS	
DRAWN BY <i>dhs</i>		PROPERTY OF EMMA H. TUCK	
CHECKED BY <i>RJR</i>		CHARLOTTE, MECK. CO., NC	
SURVEY SUPVR.		DATE 4-27-93 SCALE 1"=50'	
		JOB NO. 89395	
		FILE NO. barr-dr	
		SHEET 1	
		OF 1	

DB 7531 PG 427

145-071-13