

NOTE:

- 1) BEARINGS AND DISTANCES SHOWN IN PARENTHESES ARE BASED ON RECORDED MAP OR DEED INFORMATION.
- 2) TOTAL AREA: 21,009 SF, 0.482 AC
- 3) AREA IN TCE: 1,662 SF, 0.038 AC
- 4) AREA IN SUE: 6 SF
- 5) FEE AREA REMAINING: 21,009 SF, 0.482 AC

LINE	LENGTH	BEARING
L1	18.52	N00°24'26"E
L2	16.78	S74°32'26"W
L3	37.85	N10°38'51"W
L4	28.12	N68°53'59"W
L5	17.05	N02°52'26"W
L6	44.52	S89°35'34"E
L7	0.78	S89°35'34"E
L8	13.08	S00°24'26"W
L9	5.44	S00°24'26"W

LEGEND

TCE = TEMPORARY CONSTRUCTION EASEMENT
 SUE = PERMANENT SIDEWALK AND UTILITY EASEMENT

= TCE
 = SUE

= TCE
 = EXISTING R/W
 = SUE
 = IRON PIN FOUND

I, _____, REVIEW OFFICER OF MECKLENBURG COUNTY, CERTIFY THAT THE MAP OR PLAT TO WHICH THIS CERTIFICATION IS AFFIXED MEETS ALL STATUTORY REQUIREMENTS OF NORTH CAROLINA GENERAL STATUTES FOR RECORDING.

REVIEW OFFICER _____ DATE _____

TAX # 14509202
 HOWARD C GAINES JR
 DB 6277, PG 196
 MB 6, PG 3
 2911 BEECH NUT ROAD

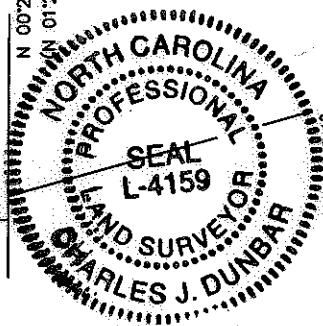
TAX # 14509212
 TROY LITTLE
 DB 2853, PG 361
 LOT 2, BLOCK 4
 MB 6, PG 3
 2910 MAYFLOWER ROAD

TAX # 145092033
 PATRICIA R MILLER
 DB 2987, PG 338
 MB 6, PG 3
 2917 BEECH NUT ROAD

TAX # 14506211
 DAVID M BROOKS
 DB 23281, PG 47
 LOT 3, BLOCK 4
 MB 6, PG 3
 2914 MAYFLOWER ROAD

TAX # 14509204
 RUBY LEE RUSH AND
 JAMES A RUSH
 DB 3058, PG 558
 MB 6, PG 3
 2923 BEECH NUT ROAD

TAX # 14509210
 JOSEPH N JETER AND
 BERNICE L JETER
 DB 3667, PG 527
 LOT 4, BLOCK 4
 MB 6, PG 3
 2920 MAYFLOWER ROAD

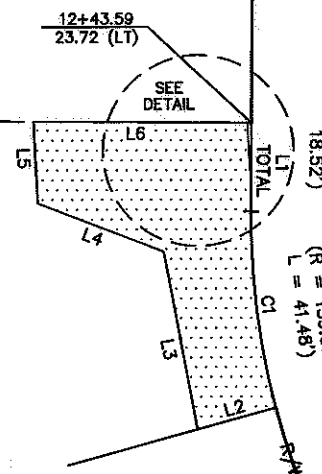
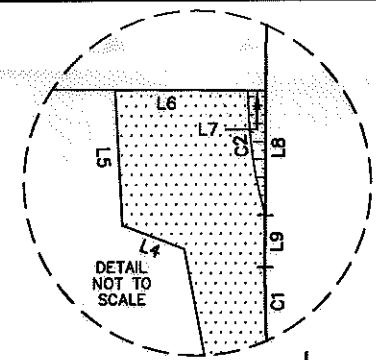


I, CHARLES J. DUNBAR, CERTIFY THAT THIS PLAT WAS PREPARED UNDER MY SUPERVISION AND THAT THIS PLAT WAS PREPARED FOR THE PURPOSE OF EASEMENTS ONLY, AND IS NOT INTENDED TO BE A BOUNDARY SURVEY OF PROPERTY SHOWN.

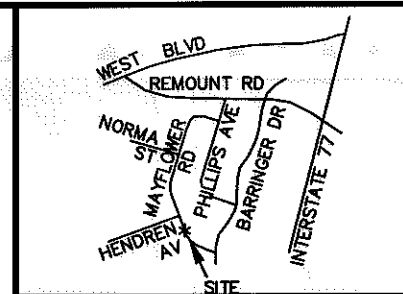
CHARLES J. DUNBAR NC PLS L-4159

3/30/10

PBSJ Plans Prepared By:
 5200 77 CENTER DRIVE, SUITE 500
 CHARLOTTE, NORTH CAROLINA 28217
 (704) 522-7275 NCCOA: F-0326



CURVE TABLE				
CURVE	LENGTH	RADIUS	CHORD BRG	CHORD DIST
C1	41.47	159.07	S07°04'04"E	41.35
C2	13.10	219.50	S03°01'25"E	13.10



VICINITY MAP NOT TO SCALE

TAX # 14504422
 IRIS M. GARNETT
 DB 7292, PG 400
 LOT 23, BLK 2
 MB 6, PG 3
 2915 MAYFLOWER ROAD

TAX # 14504423
 ROBERT THOMSON
 DB 23105, PG 96
 LOT 22, BLK 2
 MB 6, PG 3
 2921 MAYFLOWER ROAD

NC GRID NAD 83/2007

100004583v01_PARCEL 40

CHARLOTTE
 ENGINEERING DEPARTMENT

REVISIONS	REVOLUTION PARK NIP	JOB NO. 512-07-035
		FILE NO. PARCEL 40
0" SCALE 1" = 40' 40"	PROPERTY ACQUISITION OWNER: DAVID M. BROOKS CHARLOTTE, MECKLENBURG CO., NC	SHEET 1
DRAWN BY: TTB		OF
DATE: 03-30-2010	CHECKED BY: CJD	SURVEY SUPVR.: CJD 1