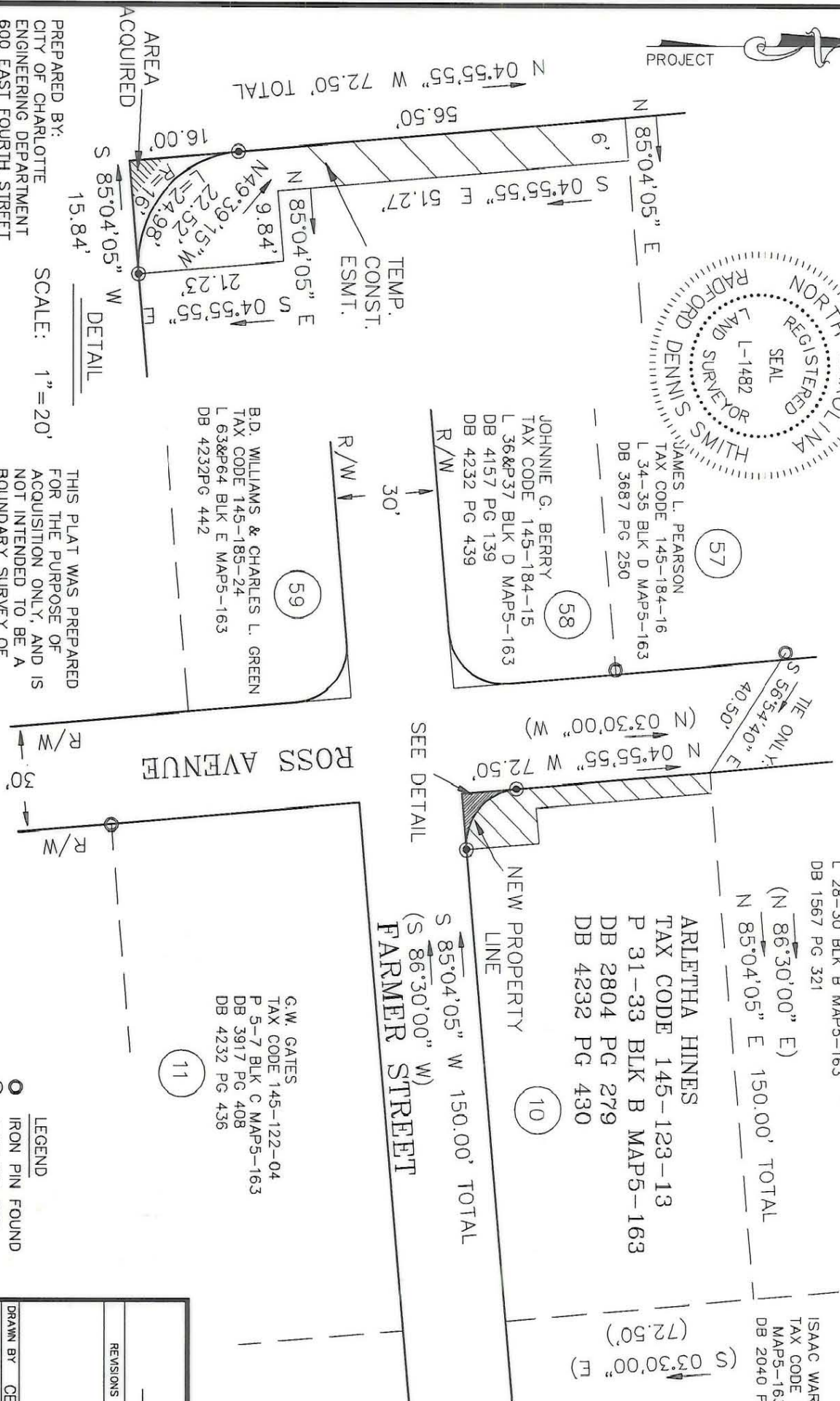
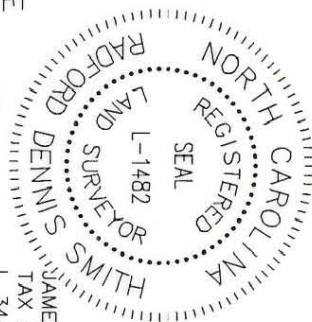
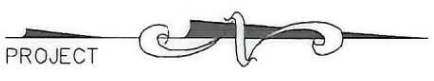


THIS PLAT WAS PREPARED UNDER MY SUPERVISION

*R. Dennis Smith* 6-17-93  
N.C. REG. LAND SURVEYOR NO. L-1482



PREPARED BY:  
CITY OF CHARLOTTE  
ENGINEERING DEPARTMENT  
600 EAST FOURTH STREET  
CHARLOTTE, NC 28202  
704-336-2291

SCALE: 1" = 20'

DETAIL

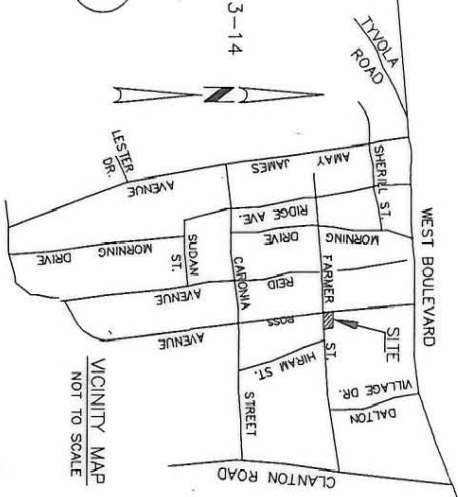
THIS PLAT WAS PREPARED FOR THE PURPOSE OF ACQUISITION ONLY, AND IS NOT INTENDED TO BE A BOUNDARY SURVEY OF PROPERTY SHOWN.

MAGGIE LEE BROWN  
TAX CODE 145-123-12  
L 28-30 BLK B MAP5-163  
DB 1567 PG 321

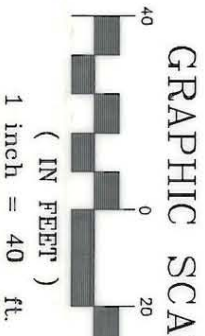
ARLETHA HINES  
TAX CODE 145-123-13  
P 31-33 BLK B MAP5-163  
DB 2804 PG 279  
DB 4232 PG 430

G.W. GATES  
TAX CODE 145-122-04  
P 5-7 BLK C MAP5-163  
DB 3917 PG 408  
DB 4232 PG 436

ISAAC WARE  
TAX CODE 145-123-14  
MAP5-163  
DB 2040 PG 309



- NOTES
- 1) BEARINGS AND DISTANCES SHOWN IN PARENTHESES ARE BASED ON DEED INFORMATION.
  - 2) BROKEN LINES INDICATE PROPERTY NOT SURVEYED.
  - 3) TOTAL AREA BY DEED 10,875 SQ.FT.
  - 4) AREA ACQUIRED: 55 SQ.FT.
  - 5) AREA REMAINING: 10,820 SQ.FT.
  - 6) AREA OF TEMP. CONSTRUCTION EASEMENT: 590 SQ.FT.



LEGEND  
● IRON PIN FOUND  
⊙ IRON PIN SET

		CHARLOTTE ENGINEERING DEPARTMENT	
REVISIONS		JOB NO. 92076	
DRAWN BY CED		FILE NO. PAR10	
CHECKED BY DHS		PROPERTY OF ARLETHA HINES	
SURVEYED BY R. DENNIS SMITH		CHARLOTTE, MECKLENBURG CO., NC	
DATE 06-14-93		SCALE 1" = 40'	
DB 7496 PG 519		SHEET 1 OF 1	

145-123-13