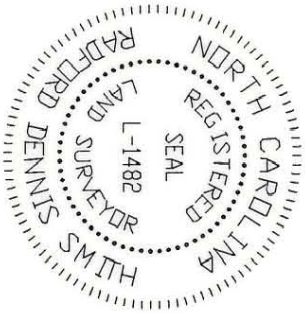


I, R. DENNIS SMITH, CERTIFY THAT THIS PLAT WAS DRAWN UNDER MY SUPERVISION FROM AN ACTUAL FIELD SURVEY UNDER MY SUPERVISION. THAT THE DEEDS AND PLATS NOTED WERE USED AS REFERENCES. THAT THE BOUNDARIES NOT SURVEYED ARE CLEARLY INDICATED AS DRAWN FROM INFORMATION AS NOTED. THAT THE RATIO OF PRECISION AS CALCULATED IS 1:10,000.

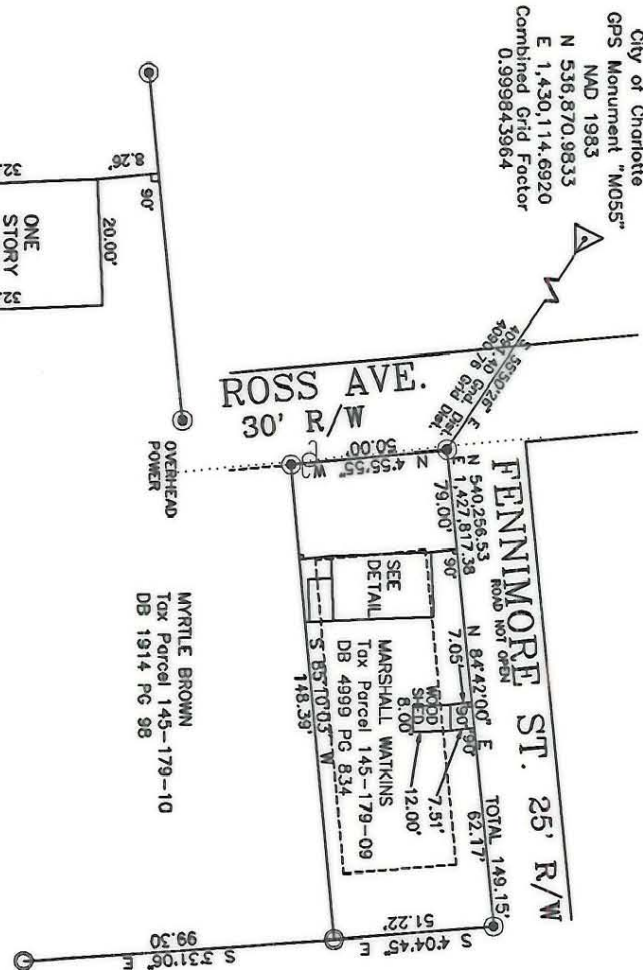
WITNESS MY ORIGINAL SIGNATURE, REGISTRATION NUMBER AND SEAL THIS 21ST DAY OF SEPTEMBER, A.D., 1993.

R. Dennis Smith

R. DENNIS SMITH
N.C.R.L.S. L-1482



City of Charlotte
GPS Monument "M055"
NAD 1983
N 536.870,9833
E 1,430,114.6920
Combined Grid Factor
0.999843964



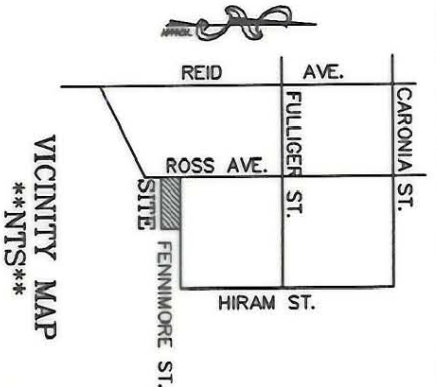
NOTES:

- 1) BROKEN LINES INDICATE PROPERTY NOT SURVEYED.
- 2) PRESENT ZONING R22MF
- 3) 30' FRONT SETBACK, 20' REAR SETBACK AND 5' PROPERTY SIDE SETBACK.
- 4) AREA: 7,529 SQ. FT.
.17 ACRES

DETAIL
***NTS**

PREPARED BY:
CITY OF CHARLOTTE
ENGINEERING DEPARTMENT
600 EAST FOURTH STREET
CHARLOTTE, NC 28202
704-336-2291

NC GRID NORTH NAD 1983



LEGEND

- IRON PIN FOUND
- ⊙ IRON PIN SET
- △ GPS MONUMENT
- ⊕ POWER POLE

GRAPHIC SCALE



(IN FEET)
1 inch = 60 ft.

		CHARLOTTE ENGINEERING DEPARTMENT	
REID PARK PHYSICAL SURVEY		JOB NO. 94402	
PROPERTY OF MARSHALL WATKINS CHARLOTTE, MECKLENBURG COUNTY, NC		FILE NO. A94002	
DRAWN BY DB CHECKED BY DHS SURVEY-SPVR.		SHEET 1 OF 1	
DATE 9-3-93 SCALE 1"=60'		DATE 9-3-93 SCALE 1"=60'	

145-179-09