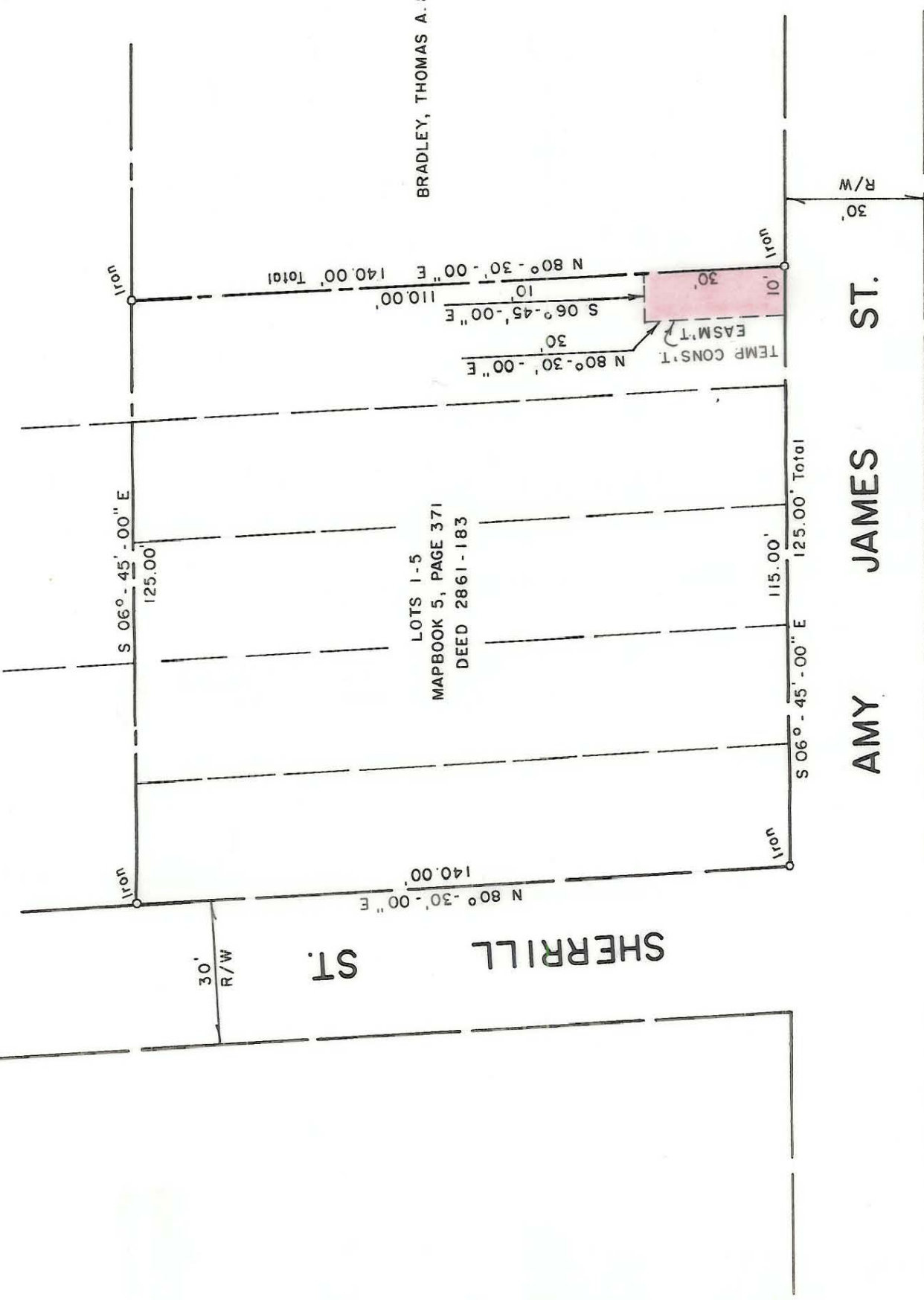


145 -



BRADLEY, THOMAS A. & w.f. THELMA

This plat was prepared under my supervision  
*Stephen Gilbert*  
 N.C. Reg. Engineer No 6233



NOTE: Property corners shown circled were located by actual survey. Bearings are based on MAP BOOK 5, PAGE 371.

<b>CITY OF CHARLOTTE</b> <b>NORTH CAROLINA</b> <b>DEPARTMENT OF PUBLIC WORKS</b> <b>ENGINEERING DIVISION</b>		JOB NO. 512 75-182
REVISIONS	PROP. TEMP. CONS'T. EASM'T. ON AMY JAMES ST.	FILE NO. 110
DRAWN BY BYHST	TRUCKERS TERMINAL INC.	SHEET 1
CHECKED BY BYSAG CITY ENGINEER	DATE NOV. 4, 1975 SCALE 1" = 30'	OF 1

Jan

145-182-06129