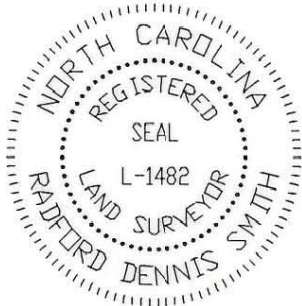


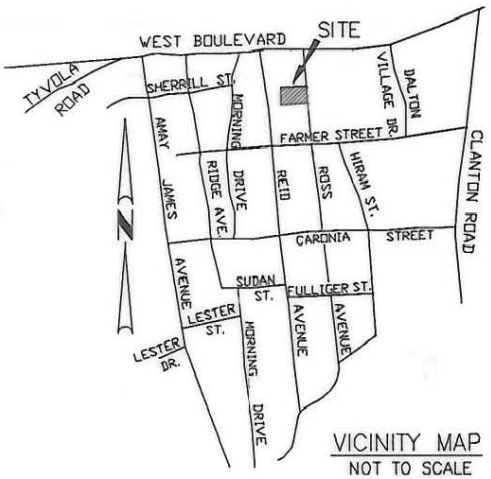
THIS PLAT WAS PREPARED UNDER MY SUPERVISION

R. Dennis Smith 8-5-93

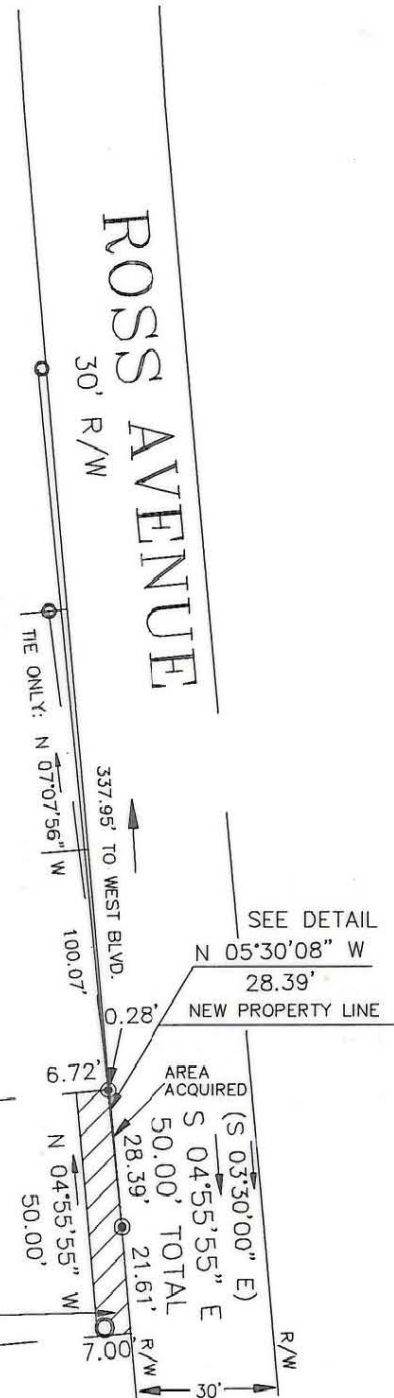
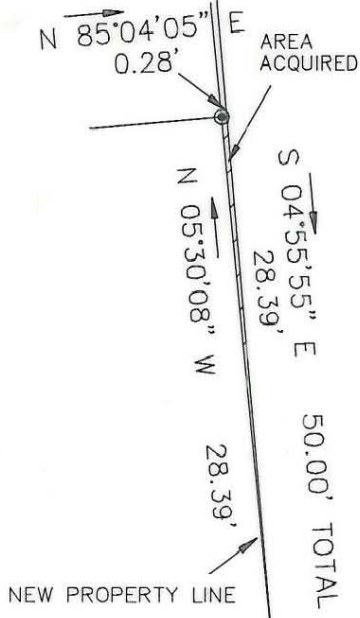
N.C. REG. LAND SURVEYOR NO. L-1482



THIS PLAT WAS PREPARED FOR THE PURPOSE OF ACQUISITION ONLY, AND IS NOT INTENDED TO BE A BOUNDARY SURVEY OF THE PROPERTY SHOWN.



VICINITY MAP NOT TO SCALE



SCALE: 1"=10'

M.F. CROUCH
TAX CODE 145-184-05
L 42&43 BLK A M5-163
DB 1635 PG 289

FRED M. HEATH
TAX CODE 145-184-23
L 17&18 BLK A M5-163
DB 5566 PG 966

ST. MATTHEWS
HOLINESS CHURCH
TAX CODE 145-184-06
L 44&45 BLK A M5-163
DB 1386 PG 246

MILAS McCLAIN
TAX CODE 145-184-22
L 19&20 BLK A M5-163
DB 2220 PG 110

MARVIN L. WOODS
TAX CODE 145-184-07
L 46&47 BLK A M5-163
DB 3796 PG 143

RUTH N. CALDWELL
TAX CODE 145-184-21
L 21&22 BLK A M5-163

MARVIN L. WOODS
TAX CODE 145-184-08
L 48&49 BLK A M5-163
DB 1654 PG 502

GATHINGS MOTOR CO., INC.
TAX CODE 145-184-20
L 23-25 BLK A M5-163
DB 3327 PG 585

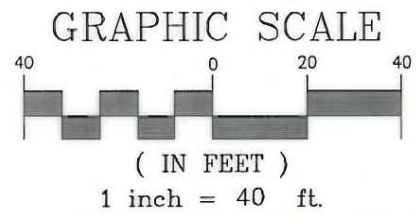
NOTES


- 1) BEARINGS AND DISTANCES SHOWN IN PARENTHESES ARE BASED ON DEED INFORMATION.
- 2) BROKEN LINES INDICATE PROPERTY NOT SURVEYED.
- 3) TOTAL AREA BY DEED 7,500 SQ. FT.
- 4) AREA ACQUIRED: 4 SQ. FT.
- 5) AREA REMAINING: 7,496 SQ. FT.
- 6) AREA OF TEMPORARY CONSTRUCTION EASEMENT 346 SQ. FT.

PREPARED BY:
CITY OF CHARLOTTE
ENGINEERING DEPARTMENT
600 EAST FOURTH STREET
CHARLOTTE, NC 28202
704-336-2291

LEGEND

- IRON PIN FOUND
- IRON SET



 CHARLOTTE ENGINEERING DEPARTMENT		
REVISIONS DRAWN BY CED CHECKED BY DHS SURVEY SUPVR.	REID PARK NEIGHBORHOOD REINVESTMENT PROPERTY OF RUTH N. CALDWELL CHARLOTTE, MECKLENBURG CO., NC DATE 07-14-93 SCALE 1"=40'	JOB NO. 92076 FILE NO. PAR52A SHEET 1 OF 1

145-184-21