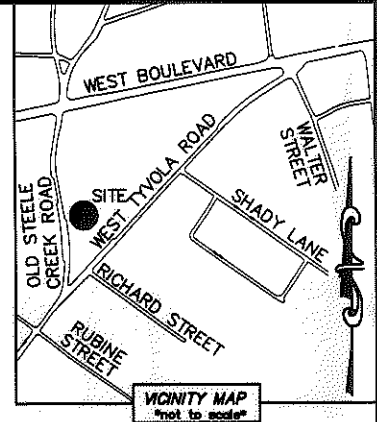


I, DAVID H. SNIDER, CERTIFY THAT THIS PLAT WAS PREPARED UNDER MY SUPERVISION AND THAT THE PLAT WAS PREPARED FOR THE PURPOSE OF ACQUISITION AND EASEMENTS ONLY, AND IS NOT INTENDED TO BE A BOUNDARY SURVEY OF PROPERTY SHOWN.

*David H. Snider* 5/29/13  
 DAVID H. SNIDER, NC P.L.S. L-2942 DATE



BOWMAN-HOLLIS MANUFACTURING CO., INC  
 TAX CODE: 145-231-09  
 DB 12465 PG 880  
 LESS DB 22924 PG 752  
 STEELE CREEK ROAD.

NAD 83(NSRS 2007)  
 COORDINATES  
 COMBINED GRID FACTOR=0.99984351  
 N:538363.79  
 E:1430359.03

STATE OF NORTH CAROLINA  
 COUNTY OF MECKLENBURG

I, \_\_\_\_\_ REVIEW OFFICER OF MECKLENBURG COUNTY, CERTIFY THAT THE MAP OR PLAT TO WHICH THIS CERTIFICATION IS AFFIXED MEETS ALL STATUTORY REQUIREMENTS FOR RECORDING.

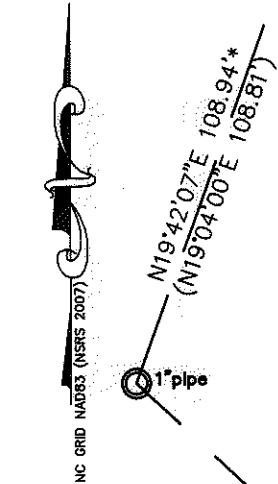
REVIEW OFFICER

DATE

03

UNIVERSITY MEMORIAL BAPTIST CHURCH  
 TAX CODE: 145-231-12  
 DB 11747 PG 006  
 4423 W. TYVOLA RD.

Line Table		
Line #	Length	Direction
L1	4.85	N41°15'49"E
L2	19.68	N43°30'34"E
L3	9.48	N46°39'43"E
L4	49.91	N43°00'59"E
L5	16.42	N40°52'04"E
L6	100.31	N42°55'17"E
L7	100.31	N42°55'17"E
L8	23.67	N22°27'13"W
L9	9.89	N42°55'17"E
L10	21.03	S82°37'31"E
L11	63.08	N43°14'06"E
L12	12.37	N22°18'17"W



UNIVERSITY MEMORIAL BAPTIST CHURCH  
 TAX CODE: 145-231-11  
 DB 11747 PG 003  
 4417 W. TYVOLA RD.

TRUSTEES OF UNIVERSITY MEMORIAL BAPTIST CHURCH  
 TAX CODE: 145-231-10  
 DB 6236 PG 151  
 LESS DB 23247 PG 934  
 4401 W. TYVOLA RD.

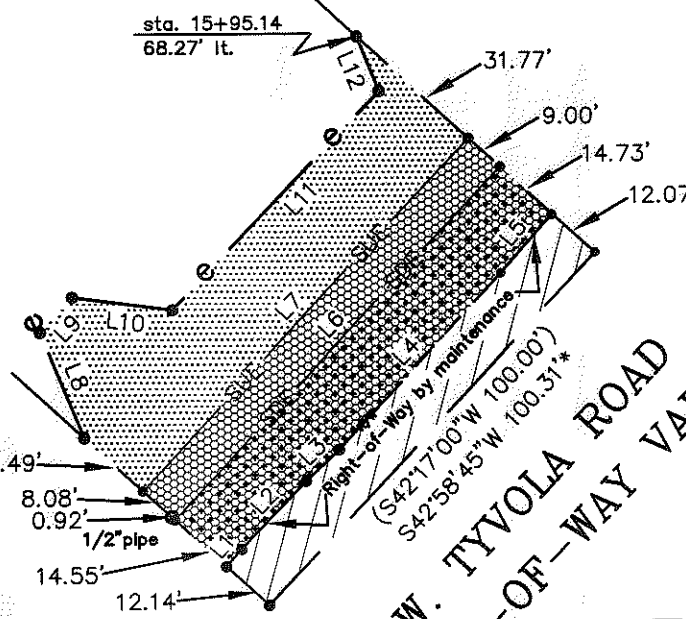
LEGEND

- IRON PIN FOUND
- CALCULATED POINT
- LINES SURVEYED
- LINES NOT SURVEYED
- TEMP. CONSTRUCTION EASEMENT
- SIDEWALK/UTILITY EASEMENT
- STORM DRAINAGE EASEMENT
- FEE SIMPLE INSIDE EXIST R/W

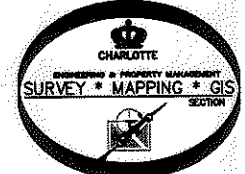
NOTES:

- 1.) BEARINGS AND DISTANCES SHOWN IN PARENTHESES ARE BASED ON RECORDED MAP INFORMATION
- 2.) COMPUTED PROJECT DISTANCE \_\_\_\_\_\*
- 3.) TOTAL AREA 23,693 SQ. FT.
- 4.) TEMP CONSTRUCTION EASEMENT 2,449 SQ. FT.
- 5.) SIDEWALK-UTILITY EASEMENT 2,409 SQ. FT.
- 6.) STORM DRAINAGE EASEMENT 1,506 SQ. FT.
- 7.) FEE SIMPLE INSIDE EXISTING R/W 1,177 SQ. FT.
- 8.) SUE OVERLAPS SDE 1,506 SQ. FT.
- 9.) AREA REMAINING 22,516 SQ. FT.

PREPARED BY:  
 CITY OF CHARLOTTE  
 ENGINEERING & PROPERTY MANAGEMENT  
 600 EAST FOURTH STREET  
 CHARLOTTE, NC 28202  
 704-336-2291



W. TYVOLA ROAD  
 RIGHT-OF-WAY VARIES



CHARLOTTE ENGINEERING & PROPERTY MANAGEMENT		
REVISIONS	W. TYVOLA ROAD SIDEWALK	JOB NO. 512-12-048
	PROPERTY ACQUISITION	FILE NO. 212048
OWNER: UNIVERSITY MEMORIAL BAPTIST CHURCH	CHARLOTTE, MECKLENBURG CO., NC	SHEET 1
DRAWN BY GF	CHECKED BY DHS SURVEY SUPVR. <i>DHS</i>	OF 1
K: \AUTOCAD\EN_SU-LD4\212048\PARCEL MAPS\PLAT -02		

ACQUISITION BY DB 28835 PG 732-737