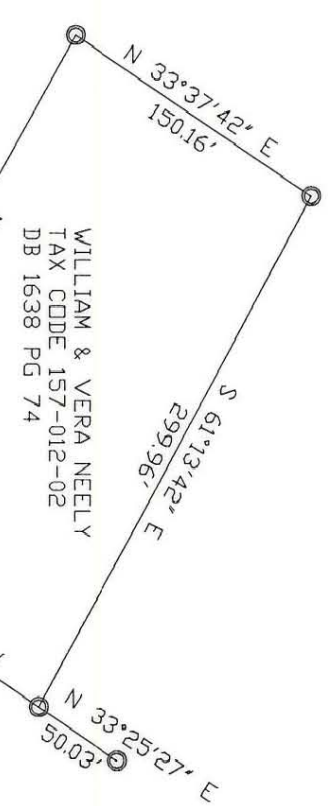




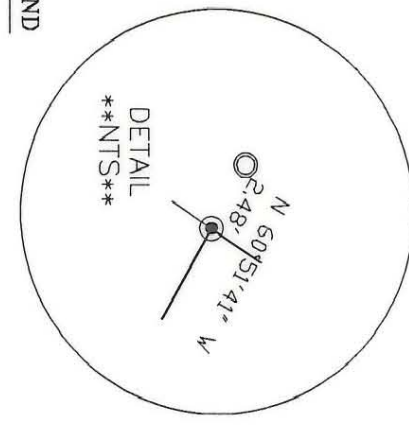
ASSOCIATED INVESTORS  
OF CHARLOTTE  
TAX CODE 157-012-04  
DB 5392 PG 605



WILLIAM & VERA NEELY  
TAX CODE 157-012-02  
DB 1638 PG 74

REALTY INVESTMENTS  
TAX CODE 157-012-08  
DB 6836 PG 130

IRVIN FRANK  
TAX CODE 157-012-06  
DB 7252 PG 487

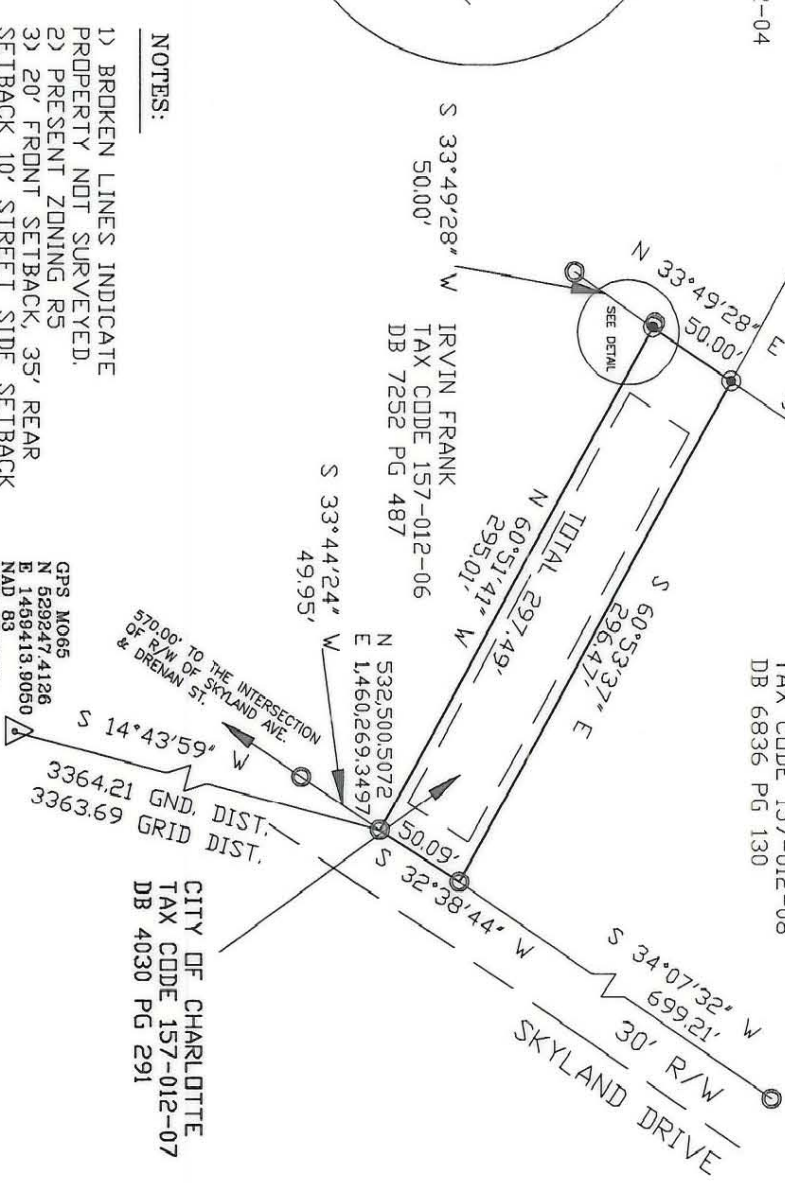
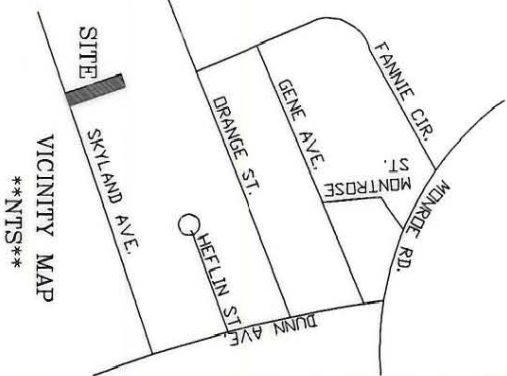
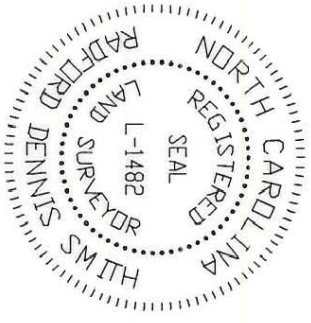


- LEGEND**
- IRON PIN FOUND
  - IRON PIN SET
  - △ CONC. MON. FOUND

PREPARED BY:  
CITY OF CHARLOTTE  
ENGINEERING DEPARTMENT  
600 EAST FOURTH STREET  
CHARLOTTE, NC 28202  
704-336-2291

I, R. DENNIS SMITH CERTIFY THAT THIS PLAT WAS DRAWN UNDER MY SUPERVISION FROM AN ACTUAL FIELD SURVEY UNDER MY SUPERVISION. THAT THE DEEDS AND PLATS NOTED WERE USED AS REFERENCES. THAT THE BOUNDARIES NOT SURVEYED ARE CLEARLY INDICATED AS DRAWN FROM INFORMATION AS NOTED. THAT THE RATIO OF PRECISION AS CALCULATED IS 1:10,000.

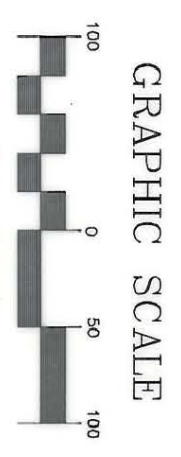
WITNESS MY ORIGINAL SIGNATURE, REGISTRATION NUMBER AND SEAL  
THIS 10th DAY OF AUGUST, A.D., 1993.  
*R. Dennis Smith*  
R. DENNIS SMITH  
N.C.R.L.S. L-1482



CITY OF CHARLOTTE  
TAX CODE 157-012-07  
DB 4030 PG 291

GPS. MO65  
N 829247.4126  
E 1469413.9050  
NAD 83  
GRID FACTOR  
0.99994570

- NOTES:**
- 1) BROKEN LINES INDICATE PROPERTY NOT SURVEYED.
  - 2) PRESENT ZONING R5
  - 3) 20' FRONT SETBACK, 35' REAR SETBACK, 10' STREET SIDE SETBACK AND 6' PROPERTY SIDE SETBACK
  - 4) AREA: 14,823 SQ. FT., .340 ACRES



<p>CHARLOTTE ENGINEERING DEPARTMENT</p>		<p>JOB NO. 94001</p>	
<p>REVISIONS</p>		<p>FILE NO.</p>	
<p>GRIER HEIGHTS BOUNDARY SURVEY</p>		<p>PROPERTY OF CITY OF CHARLOTTE</p>	
<p>DRAWN BY DB</p>		<p>CHAR7</p>	
<p>CHECKED BY DHS</p>		<p>SHEET 1</p>	
<p>SURVEYED BY</p>		<p>OF</p>	
<p>DATE 8-16-93</p>		<p>SCALE 1"=100'</p>	

157-012-07