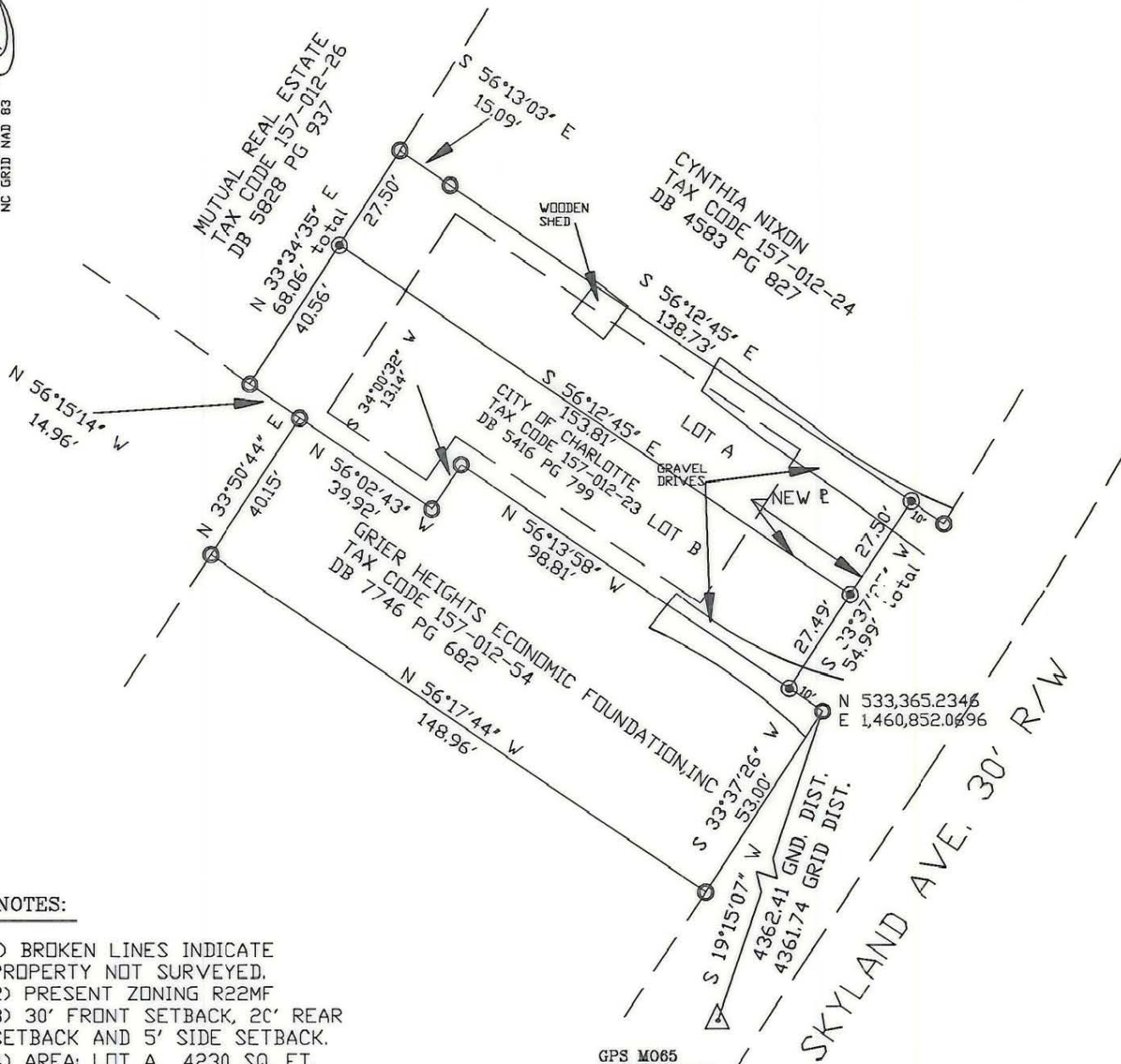
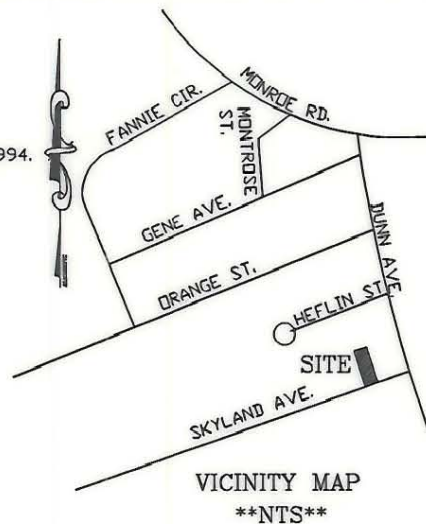
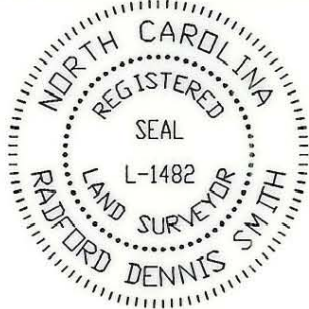


I R. DENNIS SMITH, CERTIFY THAT THIS PLAT WAS DRAWN UNDER MY SUPERVISION FROM AN ACTUAL FIELD SURVEY UNDER MY SUPERVISION. THAT THE DEEDS AND PLATS NOTED WERE USED AS REFERENCES. THAT THE BOUNDARIES NOT SURVEYED ARE CLEARLY INDICATED AS DRAWN FROM INFORMATION AS NOTED. THAT THE RATIO OF PRECISION AS CALCULATED IS 1:10,000.

WITNESS MY ORIGINAL SIGNATURE, REGISTRATION NUMBER AND SEAL THIS 21st DAY OF OCTOBER, A.D., 1994.

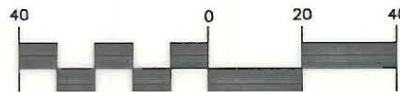
R. Dennis Smith
 R. DENNIS SMITH
 N.C.R.L.S. L-1482
 9-9-96



NOTES:

- 1) BROKEN LINES INDICATE PROPERTY NOT SURVEYED.
- 2) PRESENT ZONING R22MF
- 3) 30' FRONT SETBACK, 20' REAR SETBACK AND 5' SIDE SETBACK.
- 4) AREA: LOT A 4230 SQ. FT.
 0.097 ACRES
 LOT B 4949 SQ. FT.
 0.114 ACRES

GRAPHIC SCALE



(IN FEET)

1 inch = 40 ft.

LEGEND

- IRON PIN FOUND
- ⊙ IRON PIN SET
- △ CONC. MON. FOUND

PREPARED BY:
 CITY OF CHARLOTTE
 ENGINEERING DEPARTMENT
 600 EAST FOURTH STREET
 CHARLOTTE, NC 28202
 704-336-2291

CHARLOTTE ENGINEERING DEPARTMENT		
REVISIONS NAME CHANGE REV. 9-9-96 by dhs LOT DIVIDED REV. 10-21-94 by dhs BLOCK TIE CORRECTED REV. 8-9-94 by dhs DRAWN BY DB CHECKED BY DHS SURVEY SUPERVISOR	GRIER HEIGHTS BOUNDARY SURVEY PROPERTY OF GRIER HEIGHTS ECONOMIC FOUNDATION, INC. CITY OF CHARLOTTE, MECKLENBURG COUNTY, NC	JOB NO. 94001 FILE NO. CHAR23 SHEET 1 OF 1
DATE 8-17-93	SCALE 1"=40'	

157-012-23/24