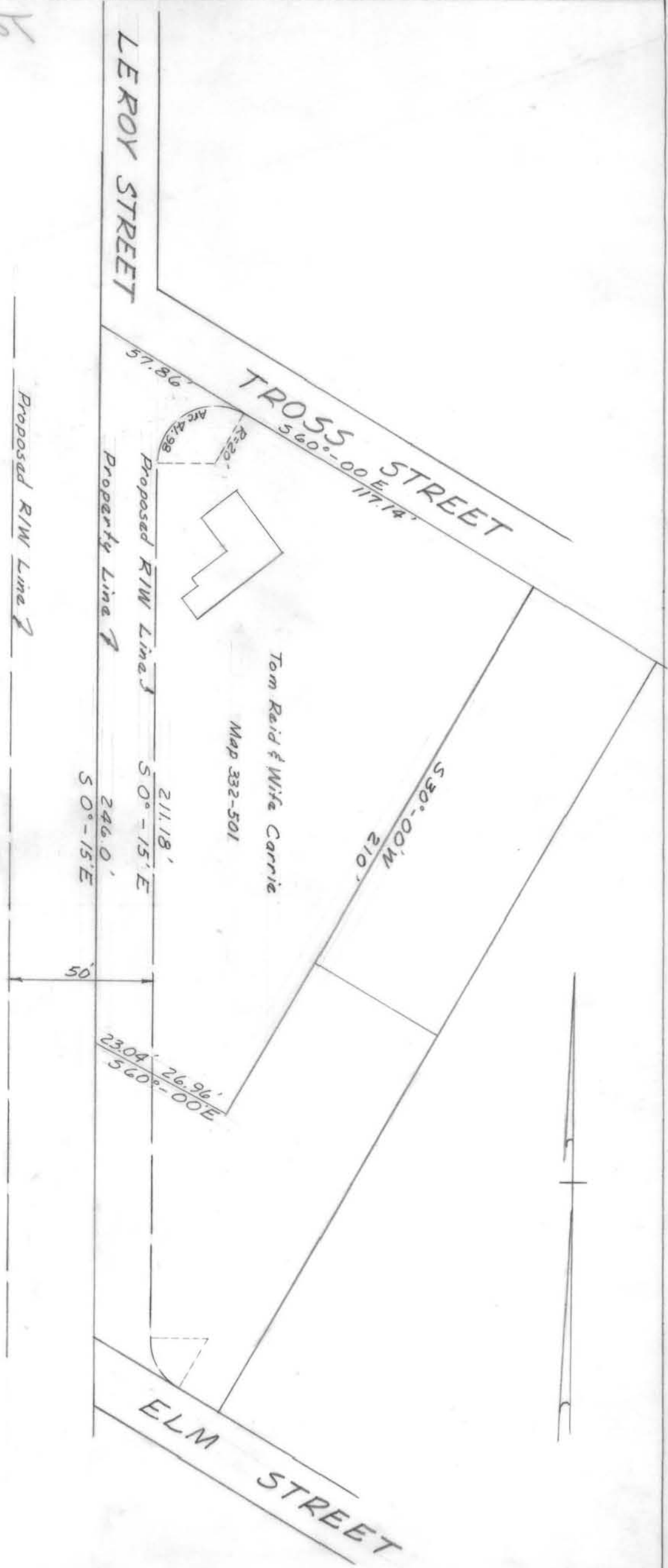


10% # 10



MAP SHOWING  
 PROPERTY TO BE ACQUIRED FROM  
 TOM REID & WIFE CARRIE  
 BY THE CITY OF CHARLOTTE  
 FOR STREET IMPROVEMENT PURPOSES  
 OFFICE OF CITY ENGINEER - CHARLOTTE, N.C.  
 Scale 1" = 40'  
 July, 8, 1957