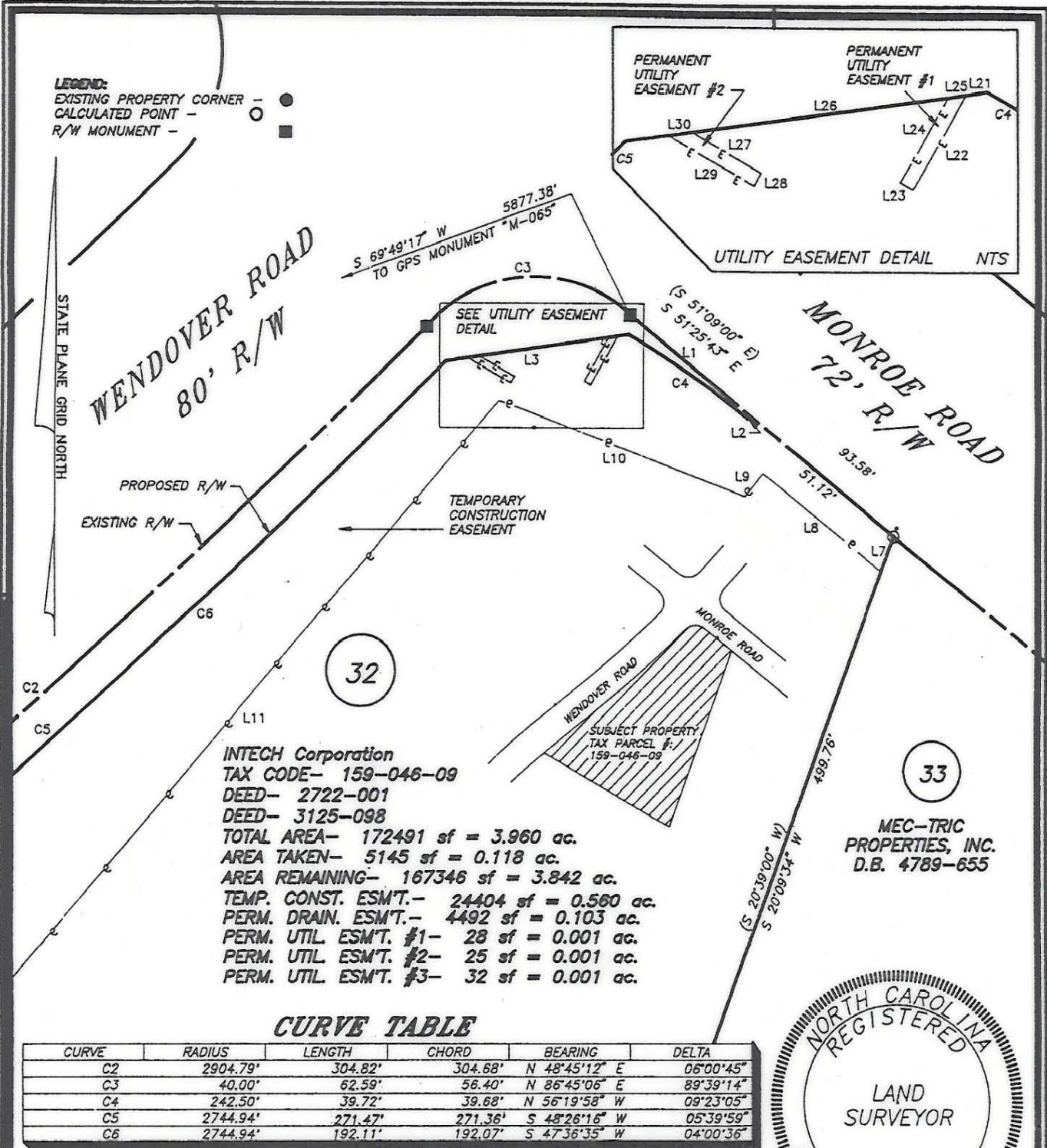


**LEGEND:**

- EXISTING PROPERTY CORNER - ●
- CALCULATED POINT - ○
- R/W MONUMENT - ■



INTECH Corporation  
 TAX CODE- 159-046-09  
 DEED- 2722-001  
 DEED- 3125-098  
 TOTAL AREA- 172491 sf = 3.960 ac.  
 AREA TAKEN- 5145 sf = 0.118 ac.  
 AREA REMAINING- 167346 sf = 3.842 ac.  
 TEMP. CONST. ESM'T.- 24404 sf = 0.560 ac.  
 PERM. DRAIN. ESM'T.- 4492 sf = 0.103 ac.  
 PERM. UTIL ESM'T. #1- 28 sf = 0.001 ac.  
 PERM. UTIL ESM'T. #2- 25 sf = 0.001 ac.  
 PERM. UTIL ESM'T. #3- 32 sf = 0.001 ac.

MEC-TRIC  
 PROPERTIES, INC.  
 D.B. 4789-655

**CURVE TABLE**

CURVE	RADIUS	LENGTH	CHORD	BEARING	DELTA
C2	2904.79'	304.82'	304.68'	N 48°45'12" E	06°00'45"
C3	40.00'	62.59'	56.40'	N 86°45'06" E	89°39'14"
C4	242.50'	39.72'	39.68'	N 56°19'58" W	09°23'05"
C5	2744.94'	271.47'	271.36'	S 48°26'16" W	05°39'59"
C6	2744.94'	192.11'	192.07'	S 47°36'35" W	04°00'36"

**LINE TABLE**

LINE	DIRECTION	DISTANCE
L1	S 51°25'43" E	42.46'
L2	S 38°34'17" W	0.98'
L3	S 82°02'46" W	50.94'
L7	S 20°09'34" W	9.82'
L8	N 51°39'35" W	41.88'
L9	S 38°20'28" W	8.00'
L10	N 69°33'27" W	72.62'
L11	S 41°03'57" W	247.61'
L21	S 82°02'46" W	2.94'
L22	S 30°29'35" W	14.92'
L23	N 59°29'53" W	2.00'
L24	N 30°29'37" E	13.34'
L25	N 82°02'46" E	2.55'
L26	S 82°02'46" W	36.03'
L27	S 60°35'54" E	11.02'
L28	S 29°22'18" W	2.00'
L29	N 60°36'00" W	13.64'
L30	N 82°02'46" E	3.30'

**NOTES:**

- 1 ) Property corners shown as solid circles were located by actual survey.
- 2 ) Bearings and distances shown in parentheses are based on deed information.
- 3 ) This map was prepared for the purpose of property acquisition only, and is not intended to be a boundary survey of the total property shown.
- 4 ) Acquisition and Easement areas shown were calculated using a combination of field survey data, information provided in the legal descriptions, and plats called for in the legal descriptions.
- 5 ) State Plane Coordinate System is NAD 83.
- 6 ) All distances shown on this map are horizontal ground distances unless otherwise noted.
- 7 ) Grid Coordinates for GPS Monument "M-065" - N=529247.48 E=1459413.91



THIS PLAT WAS PREPARED  
 UNDER MY SUPERVISION  
*C.A. Holland Jr.*  
 C.A. HOLLAND JR.  
 NCRLS L-3049

PREPARED BY  
**C.A. HOLLAND SURVEYORS, INC.**

PREPARED FOR  
**CHARLOTTE ENGINEERING DEPARTMENT**

REVISIONS	<b>MONROE - EASTWAY -                  WENDOVER                  INTERSECTION IMPROVEMENTS</b>	JOB NO.
		PROJECT PARCEL NO.
DRAWN BY: RHW CHECKED BY: CAH	PROPERTY OF  <b>INTECH                  CORPORATION</b>	32
CAH SURVEY SUPVR.		SHEET 32A
COMPUTER FILENAME: 04609.DWG BACKUP DISC: ACD-103	DATE: SEPTEMBER 1, 1991 SCALE: 1" = 40'	OF

159-046-09

New