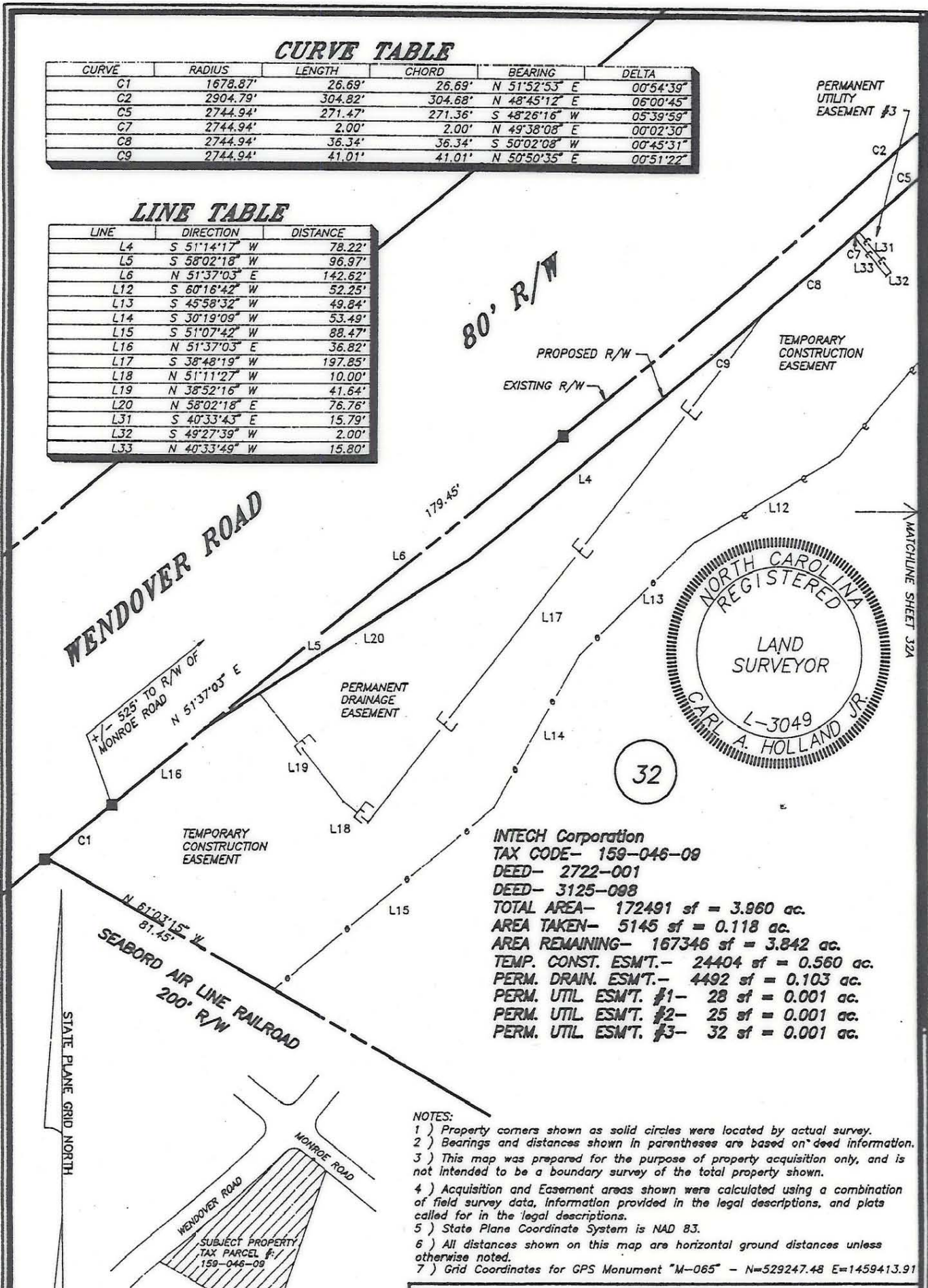


CURVE TABLE

CURVE	RADIUS	LENGTH	CHORD	BEARING	DELTA
C1	1678.87'	26.69'	26.69'	N 51°52'53" E	00°54'39"
C2	2904.79'	304.82'	304.68'	N 48°45'12" E	06°00'45"
C5	2744.94'	271.47'	271.36'	S 48°26'16" W	05°39'59"
C7	2744.94'	2.00'	2.00'	N 49°38'08" E	00°02'30"
C8	2744.94'	36.34'	36.34'	S 50°02'08" W	00°45'31"
C9	2744.94'	41.01'	41.01'	N 50°50'35" E	00°51'22"

LINE TABLE

LINE	DIRECTION	DISTANCE
L4	S 51°14'17" W	78.22'
L5	S 58°02'18" W	96.97'
L6	N 51°37'03" E	142.62'
L12	S 60°16'42" W	52.25'
L13	S 45°58'32" W	49.84'
L14	S 30°19'09" W	53.49'
L15	S 51°07'42" W	88.47'
L16	N 51°37'03" E	36.82'
L17	S 38°48'19" W	197.85'
L18	N 51°11'27" W	10.00'
L19	N 38°52'16" W	41.64'
L20	N 58°02'18" E	76.76'
L31	S 40°33'43" E	15.79'
L32	S 49°27'39" W	2.00'
L33	N 40°33'49" W	15.80'



INTECH Corporation
 TAX CODE- 159-046-09
 DEED- 2722-001
 DEED- 3125-098
 TOTAL AREA- 172491 sf = 3.860 ac.
 AREA TAKEN- 5145 sf = 0.118 ac.
 AREA REMAINING- 167346 sf = 3.842 ac.
 TEMP. CONST. ESM'T.- 24404 sf = 0.560 ac.
 PERM. DRAIN. ESM'T.- 4492 sf = 0.103 ac.
 PERM. UTIL ESM'T. #1- 28 sf = 0.001 ac.
 PERM. UTIL ESM'T. #2- 25 sf = 0.001 ac.
 PERM. UTIL ESM'T. #3- 32 sf = 0.001 ac.

- NOTES:
 1) Property corners shown as solid circles were located by actual survey.
 2) Bearings and distances shown in parentheses are based on deed information.
 3) This map was prepared for the purpose of property acquisition only, and is not intended to be a boundary survey of the total property shown.
 4) Acquisition and Easement areas shown were calculated using a combination of field survey data, information provided in the legal descriptions, and plats called for in the legal descriptions.
 5) State Plane Coordinate System is NAD 83.
 6) All distances shown on this map are horizontal ground distances unless otherwise noted.
 7) Grid Coordinates for GPS Monument "M-065" - N=529247.48 E=1459413.91

LEGEND:
 EXISTING PROPERTY CORNER - ●
 CALCULATED POINT - ○
 R/W MONUMENT - ■

THIS PLAT WAS PREPARED UNDER MY SUPERVISION
C.A. Holland Jr.
 C.A. HOLLAND JR.
 NCRLS L-3049

PREPARED BY
C.A. HOLLAND SURVEYORS, INC.

COMPUTER FILENAME: 04609.DWG BACKUP DISC: AGD-103

PREPARED FOR		
CHARLOTTE ENGINEERING DEPARTMENT		
REVISIONS	MONROE - EASTWAY - WENDOVER INTERSECTION IMPROVEMENTS	JOB NO.
		PROJECT PARCEL NO.
	PROPERTY OF	32
	INTECH CORPORATION	SHEET
DRAWN BY: RHW		32B
CHECKED BY: CAH		OF
CAH SURVEY SUPVR.	DATE: SEPTEMBER 1, 1991	SCALE: 1" = 40'

159-046-09

NEW