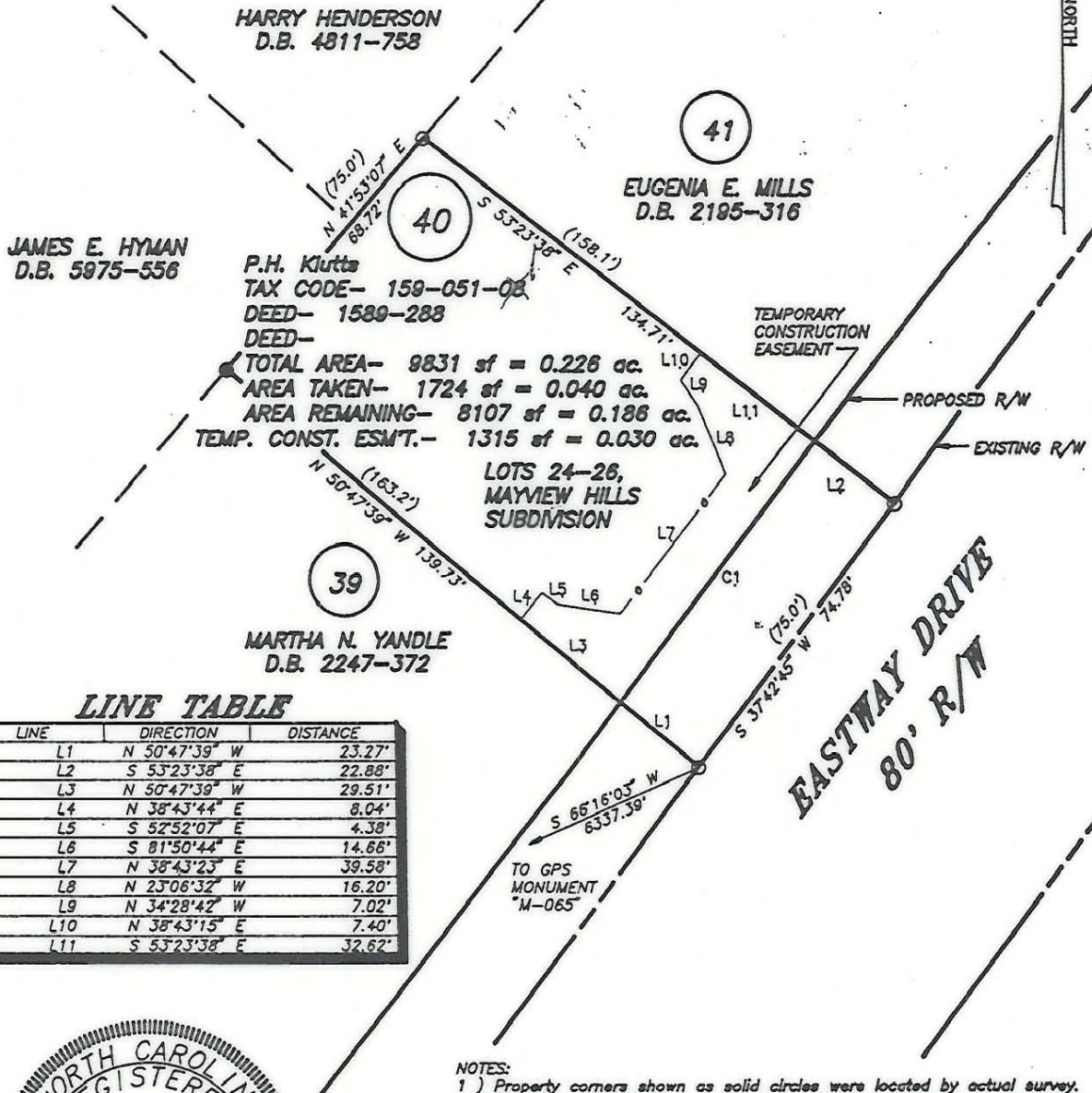


CURVE TABLE

CURVE	RADIUS	LENGTH	CHORD	BEARING	DELTA
C1	3152.91'	73.73'	73.73'	S 38°00'30" W	01°20'24"



P.H. Klutts
 TAX CODE- 159-051-08
 DEED- 1589-288
 DEED-
 TOTAL AREA- 9831 sf = 0.226 ac.
 AREA TAKEN- 1724 sf = 0.040 ac.
 AREA REMAINING- 8107 sf = 0.186 ac.
 TEMP. CONST. ESM'T.- 1315 sf = 0.030 ac.

**LOTS 24-26,
 MAYVIEW HILLS
 SUBDIVISION**

LINE TABLE

LINE	DIRECTION	DISTANCE
L1	N 50°47'39" W	23.27'
L2	S 53°23'38" E	22.88'
L3	N 50°47'39" W	29.51'
L4	N 38°43'44" E	8.04'
L5	S 52°52'07" E	4.38'
L6	S 81°50'44" E	14.66'
L7	N 38°43'23" E	39.58'
L8	N 23°06'32" W	16.20'
L9	N 34°28'42" W	7.02'
L10	N 38°43'15" E	7.40'
L11	S 53°23'38" E	32.62'



- NOTES:**
- 1) Property corners shown as solid circles were located by actual survey.
 - 2) Bearings and distances shown in parentheses are based on deed information.
 - 3) This map was prepared for the purpose of property acquisition only, and is not intended to be a boundary survey of the total property shown.
 - 4) Acquisition and Easement areas shown were calculated using a combination of field survey data, information provided in the legal descriptions, and plats called for in the legal descriptions.
 - 5) State Plane Coordinate System is NAD 83.
 - 6) All distances shown on this map are horizontal ground distances unless otherwise noted.
 - 7) Grid Coordinates for GPS Monument "M-065" - N=529247.48 E=1459413.91

LEGEND:
 EXISTING PROPERTY CORNER - ●
 CALCULATED POINT - ○

THIS PLAT WAS PREPARED
 UNDER MY SUPERVISION

C.A. HOLLAND JR.
 NCRLS L-3049

PREPARED BY
C.A. HOLLAND SURVEYORS, INC.

COMPUTER FILENAME: 05108.DWG BACKUP DISC: ACD-104

PREPARED FOR CHARLOTTE ENGINEERING DEPARTMENT		
REVISIONS	MONROE - EASTWAY - WENDOVER INTERSECTION IMPROVEMENTS	JOB NO.
	PROPERTY OF	PROJECT PARCEL NO.
	P. H. KLUTTS	40
DRAWN BY: RHW		SHEET
CHECKED BY: CAH		40
CAH SURVEY SUPVR.		OF
DATE:	SCALE: 1" = 40'	

159-051-085