

LINE TABLE

LINE	DIRECTION	DISTANCE
L1	N 38°11'04" E	1.41'
L2	N 38°20'17" E	6.31'
L3	S 39°16'19" W	7.48'
L4	S 39°16'19" W	2.18'
L5	S 55°17'18" E	32.22'
L6	N 53°13'02" W	32.05'
L7	N 51°50'25" W	32.00'
L8	N 51°50'25" W	45.88'

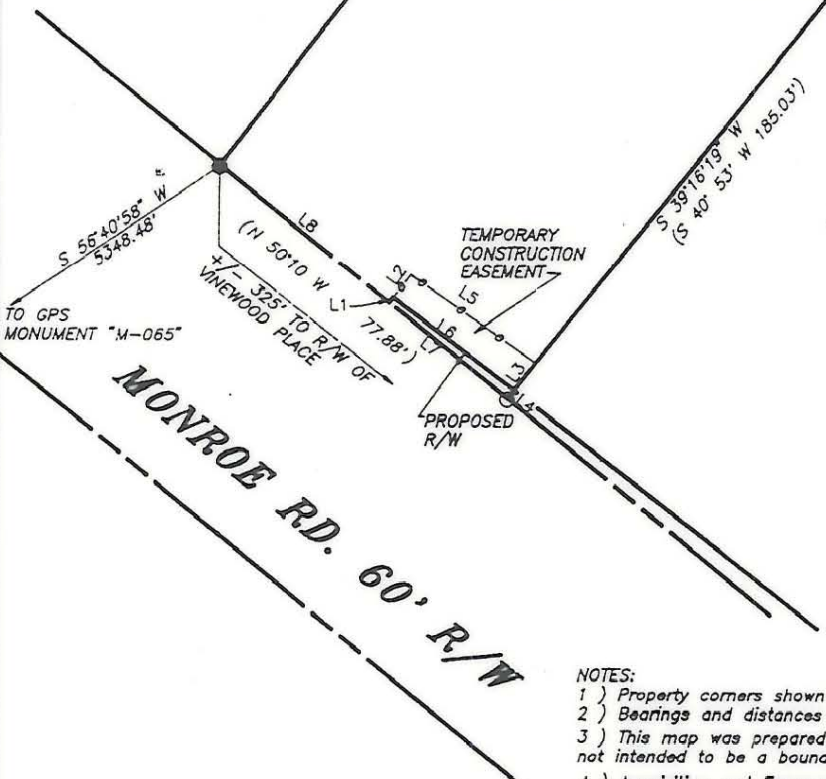
STATE PLANE GRID NORTH

WALTER S. BOONE
D.B. 5233-725

BARBARA J. EPLEY
D.B. 5042-298

CLAUDE W. BROWN, JR.
TAX CODE- 159-054-10
DEED- 1781-422
DEED-
TOTAL AREA- 14708 sf = 0.337 ac.
AREA TAKEN- 57 sf = 0.001 ac.
AREA REMAINING- 14651 sf = 0.336 ac.
TEMP. CONST. ESM'T.- 221sf = 0.005 ac.

RONALD CLARENCE WELCH
D.B. 2630-117



NOTES:

- 1) Property corners shown as solid circles were located by actual survey.
- 2) Bearings and distances shown in parentheses are based on deed information.
- 3) This map was prepared for the purpose of property acquisition only, and is not intended to be a boundary survey of the total property shown.
- 4) Acquisition and Easement areas shown were calculated using a combination of field survey data, information provided in the legal descriptions, and plats called for in the legal descriptions.
- 5) State Plane Coordinate System is NAD 83.
- 6) All distances shown on this map are horizontal ground distances unless otherwise noted.
- 7) Grid Coordinates for GPS Monument "M-065" - N=529247.48 E=1459413.91

LEGEND:

EXISTING PROPERTY CORNER - ●
CALCULATED POINT - ○

THIS PLAT WAS PREPARED
UNDER MY SUPERVISION
C.A. Holland Jr.
C.A. HOLLAND JR.
NCRLS L-3049

PREPARED BY
C.A. HOLLAND SURVEYORS, INC.



PREPARED FOR
CHARLOTTE ENGINEERING DEPARTMENT

REVISIONS	MONROE - EASTWAY - WENDOVER INTERSECTION IMPROVEMENTS	JOB NO.
		PROJECT PARCEL NO.
DRAWN BY:	PROPERTY OF CLAUDE W. BROWN, JR.	2
		SHEET
CHECKED BY:	CAH SURVEY SUPVR.	2
DATE: SEPTEMBER 1, 1991		OF

COMPUTER FILENAME: 05410.dwg BACKUP DISC: AGD-98 SCALE: 1" = 40'

159-054-10