

LINE TABLE

LINE	DIRECTION	DISTANCE
L1	N 51°46'39" W	9.54'
L2	N 51°50'25" W	70.86'
L3	N 39°16'19" E	2.18'
L4	N 39°16'19" E	7.48'
L5	S 55°17'18" E	67.52'
L6	S 36°47'00" W	9.92'
L7	S 39°21'00" W	4.13'
L8	S 53°13'02" E	67.80'
L9	S 53°13'02" E	12.67'
L10	N 36°47'00" E	81.87'
L11	S 53°12'59" E	16.34'
L12	S 39°21'00" W	81.95'
L13	S 39°21'00" W	11.97'

STATE PLANE GRID NORTH

②
CLAUDE W. BROWN, JR.
 D.B. 1781-422

③

BARBARA J. EPLEY
 D.B. 5042-298

RONALD CLARENCE WELCH
 TAX CODE- 159-054-11
 DEED- 2630-117
 DEED-
 TOTAL AREA- 14887 sf = 0.341 ac.
 AREA TAKEN- 253 sf = 0.005 ac.
 AREA REMAINING- 14634 sf = 0.336 ac.
 PERM. DRAIN. ESM'T.- 1187 sf = 0.027 ac.
 TEMP. CONST. ESM'T.- 588 sf = 0.013 ac.

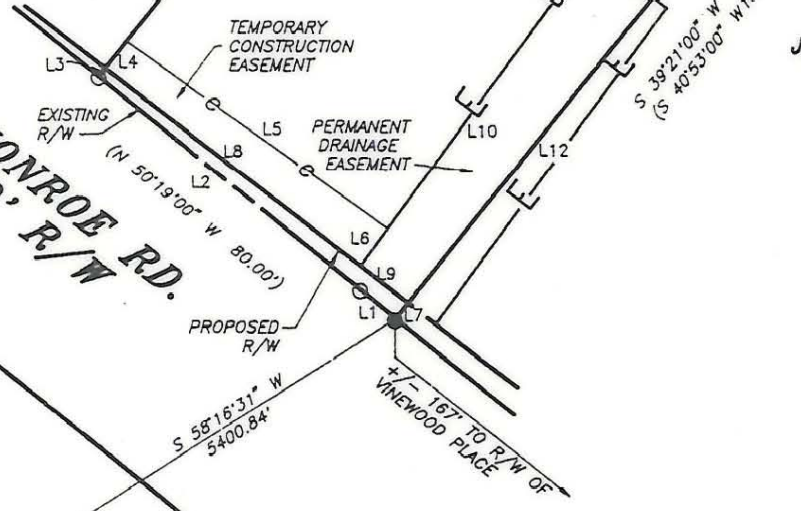
PAULINE L. SNELL
 P.B. 4 Pg. 69

④

JOHN EDWARD WATTS
 P.B. 4 Pg. 69
 BY WILL



MONROE RD.
 60' R/W



- NOTES:
- 1) Property corners shown as solid circles were located by actual survey.
 - 2) Bearings and distances shown in parentheses are based on deed information.
 - 3) This map was prepared for the purpose of property acquisition only, and is not intended to be a boundary survey of the total property shown.
 - 4) Acquisition and Easement areas shown were calculated using a combination of field survey data, information provided in the legal descriptions, and plats called for in the legal descriptions.
 - 5) State Plane Coordinate System is NAD 83.
 - 6) All distances shown on this map are horizontal ground distances unless otherwise noted.
 - 7) Grid Coordinates for GPS Monument "M-065" - N=529247.48 E=1459413.91

LEGEND:
 EXISTING PROPERTY CORNER - ●
 CALCULATED POINT - ○

THIS PLAT WAS PREPARED
 UNDER MY SUPERVISION
C.A. Holland Jr.
 C.A. HOLLAND JR.
 NCRLS L-3049

PREPARED FOR		
CHARLOTTE ENGINEERING DEPARTMENT		
REVISIONS	MONROE - EASTWAY - WENDOVER INTERSECTION IMPROVEMENTS	JOB NO.
		PROJECT PARCEL NO.
	PROPERTY OF	3
	RONALD C. WELCH	SHEET
		3
		OF
DRAWN BY:		
CHECKED BY:		
	CAH	
	SURVEY SUPVR.	
COMPUTER FILENAME: 05411.DWG	BACKUP DISC: ACD-98	DATE: SEPTEMBER 1, 1991 SCALE: 1" = 40'

159-054-11