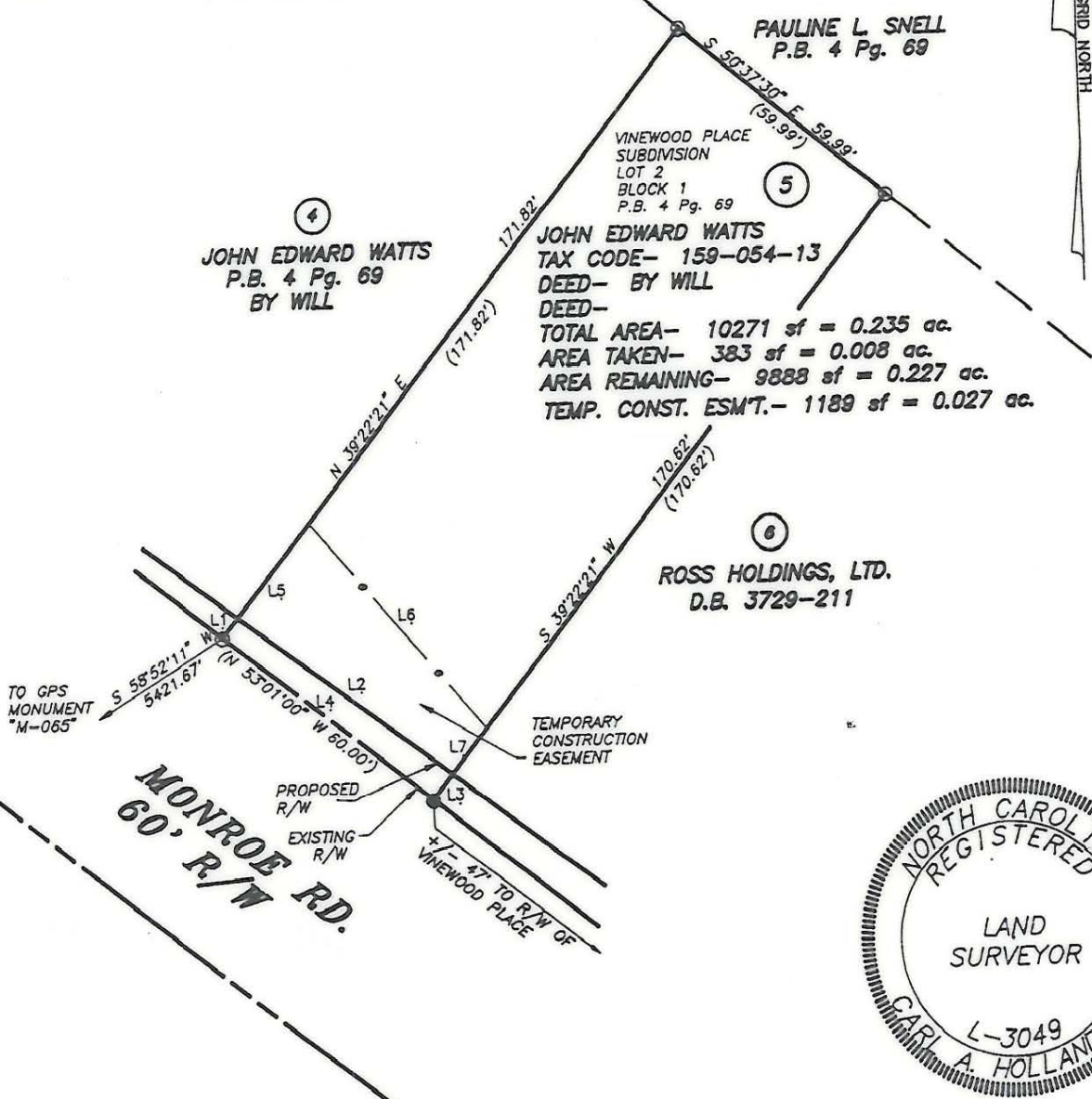


LINE TABLE

LINE	DIRECTION	DISTANCE
L1	N 39°22'21" E	5.63'
L2	S 53°13'03" E	60.05'
L3	S 39°22'21" W	7.14'
L4	N 51°46'39" W	60.00'
L5	N 39°22'21" E	26.63'
L6	S 40°18'35" E	60.97'
L7	S 39°22'21" W	13.00'

STATE PLANE GRID NORTH



④
JOHN EDWARD WATTS
 P.B. 4 Pg. 69
 BY WILL

⑤
PAULINE L. SNELL
 P.B. 4 Pg. 69

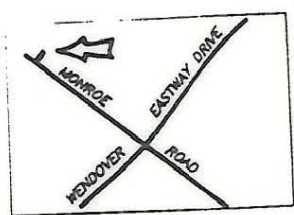
VINEWOOD PLACE
 SUBDIVISION
 LOT 2
 BLOCK 1
 P.B. 4 Pg. 69

⑥
JOHN EDWARD WATTS
 TAX CODE- 159-054-13
 DEED- BY WILL
 DEED-
 TOTAL AREA- 10271 sf = 0.235 ac.
 AREA TAKEN- 383 sf = 0.008 ac.
 AREA REMAINING- 9888 sf = 0.227 ac.
 TEMP. CONST. ESM'T.- 1189 sf = 0.027 ac.

⑥
ROSS HOLDINGS, LTD.
 D.B. 3729-211



- NOTES:
- 1) Property corners shown as solid circles were located by actual survey.
 - 2) Bearings and distances shown in parentheses are based on deed information.
 - 3) This map was prepared for the purpose of property acquisition only, and is not intended to be a boundary survey of the total property shown.
 - 4) Acquisition and Easement areas shown were calculated using a combination of field survey data, information provided in the legal descriptions, and plats called for in the legal descriptions.
 - 5) State Plane Coordinate System is NAD 83.
 - 6) All distances shown on this map are horizontal ground distances unless otherwise noted.
 - 7) Grid Coordinates for GPS Monument "M-065" - N=529247.48 E=1459413.91



LEGEND:
 EXISTING PROPERTY CORNER - ●
 CALCULATED POINT - ○

THIS PLAT WAS PREPARED
 UNDER MY SUPERVISION
C. A. Holland Jr.
 C.A. HOLLAND JR.
 NCRLS L-3049

PREPARED FOR		JOB NO.	
CHARLOTTE ENGINEERING DEPARTMENT		PROJECT PARCEL NO.	
MONROE - EASTWAY - WENDOVER INTERSECTION IMPROVEMENTS		8	
PROPERTY OF		SHEET	
JOHN EDWARD WATTS		5	
DRAWN BY:		OF	
CHECKED BY:			
CAH SURVEY SUPV.		DATE: SEPTEMBER 1, 1991 SCALE: 1" = 40'	
COMPUTER FILENAME: 05413.DWG		BACKUP DISC: ACD-99	

159-054-13