

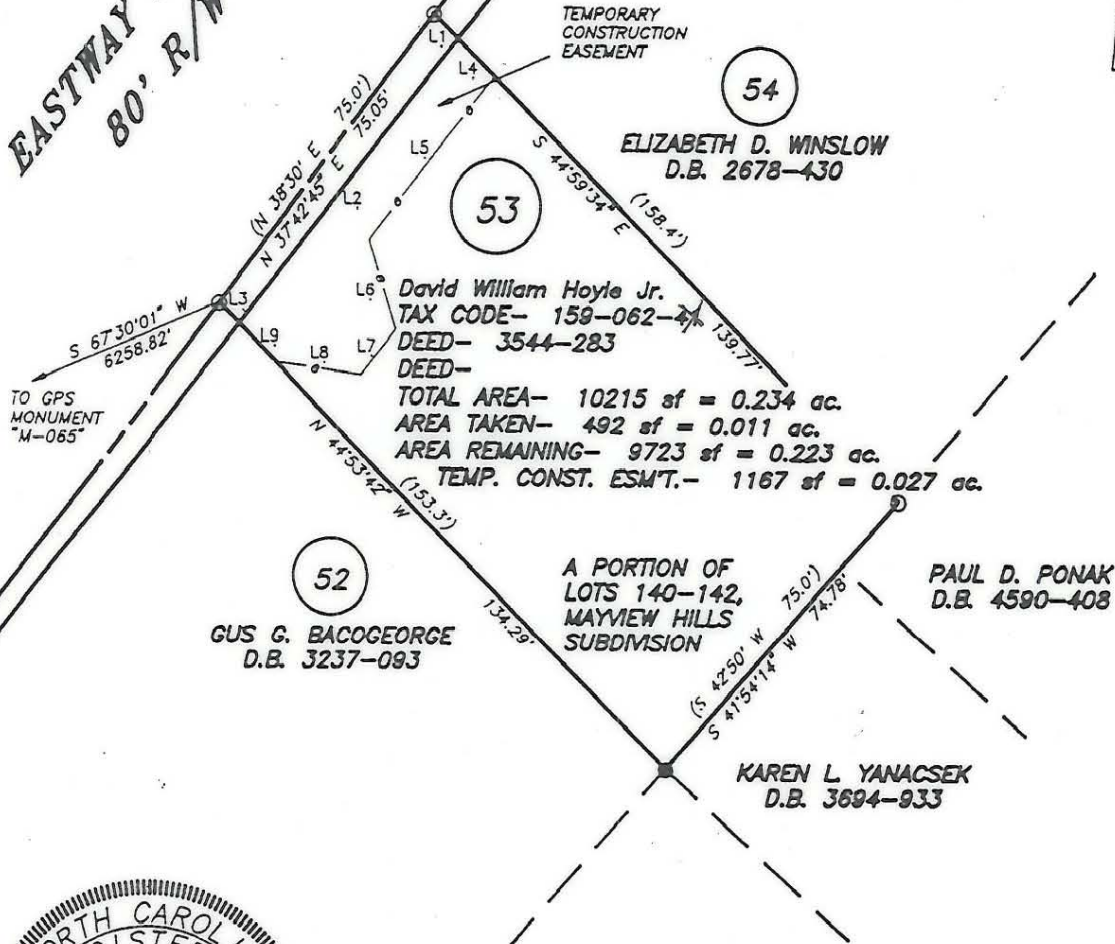
LINE TABLE

LINE	DIRECTION	DISTANCE
L1	S 44°59'34" E	7.27'
L2	S 38°43'19" W	74.90'
L3	N 44°53'42" W	5.94'
L4	S 44°59'34" E	11.00'
L5	S 38°43'20" W	42.94'
L6	S 17°28'24" E	19.01'
L7	S 38°43'18" W	12.01'
L8	N 81°59'24" W	18.38'
L9	N 44°53'42" W	11.00'

EASTWAY DRIVE
80' R/W

EXISTING R/W
PROPOSED R/W

STATE PLANE GRID NORTH



TO GPS MONUMENT "M-065"

52
GUS G. BACOGEORGE
D.B. 3237-093

53
David William Hoyle Jr.
TAX CODE- 159-062-24
DEED- 3544-283
DEED-
TOTAL AREA- 10215 sf = 0.234 ac.
AREA TAKEN- 492 sf = 0.011 ac.
AREA REMAINING- 9723 sf = 0.223 ac.
TEMP. CONST. ESM'T.- 1167 sf = 0.027 ac.

54
ELIZABETH D. WINSLOW
D.B. 2678-430

A PORTION OF LOTS 140-142, MAYVIEW HILLS SUBDIVISION
PAUL D. PONAK
D.B. 4590-408

KAREN L. YANACSEK
D.B. 3694-933



- NOTES:
- 1) Property corners shown as solid circles were located by actual survey.
 - 2) Bearings and distances shown in parentheses are based on deed information.
 - 3) This map was prepared for the purpose of property acquisition only, and is not intended to be a boundary survey of the total property shown.
 - 4) Acquisition and Easement areas shown were calculated using a combination of field survey data, information provided in the legal descriptions, and plats called for in the legal descriptions.
 - 5) State Plane Coordinate System is NAD 83.
 - 6) All distances shown on this map are horizontal ground distances unless otherwise noted.
 - 7) Grid Coordinates for GPS Monument "M-065" - N=529247.48 E=1458413.91

LEGEND:
EXISTING PROPERTY CORNER - ●
CALCULATED POINT - ○

THIS PLAT WAS PREPARED UNDER MY SUPERVISION

C.A. HOLLAND JR.
NCRLS L-3049

PREPARED BY
C.A. HOLLAND SURVEYORS, INC.

COMPUTER FILENAME: 05241.DWG

BACKUP DISC: ACD-105

PREPARED FOR CHARLOTTE ENGINEERING DEPARTMENT		
REVISIONS	MONROE - EASTWAY - WENDOVER INTERSECTION IMPROVEMENTS	JOB NO.
	PROPERTY OF DAVID WILLIAM HOYLE, JR. & wife, JANE M. HOYLE	PROJECT PARCEL NO. 53
	DRAWN BY: RHW	SHEET 53
	CHECKED BY: CAH	OF
C.A. SURVEY SUPVR.	DATE:	SCALE: 1" = 40'

159-062-24 31