

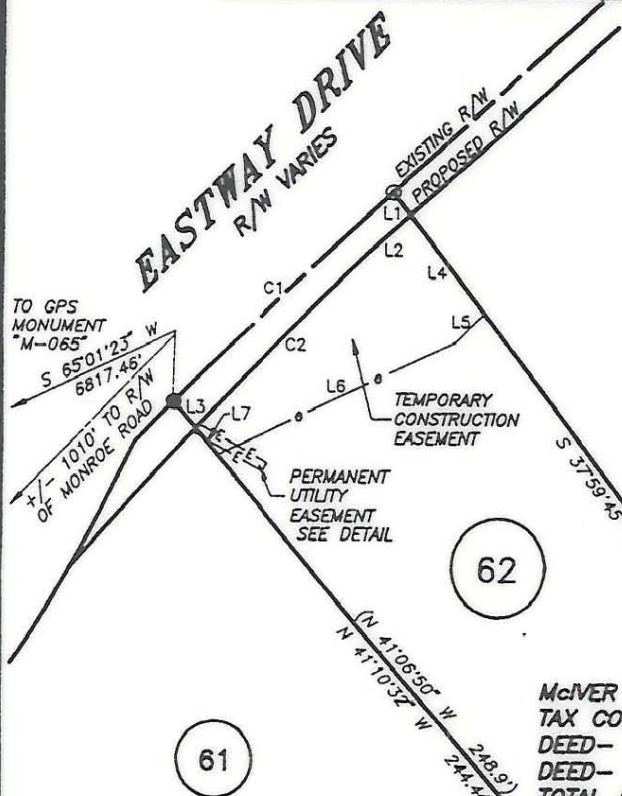
CURVE TABLE

CURVE	RADIUS	LENGTH	CHORD	BEARING	DELTA
C1	1869.86'	63.57'	63.57'	S 46°47'40" W	01°56'53"
C2	1860.89'	51.29'	51.29'	S 45°00'53" W	01°34'45"
C3	1860.89'	1.22'	1.22'	N 44°14'37" E	00°02'15"

LINE TABLE

LINE	DIRECTION	DISTANCE
L1	S 37°59'45" E	6.02'
L2	S 48°41'51" W	12.02'
L3	N 41°10'32" W	7.19'
L4	S 37°59'45" E	25.69'
L5	S 45°48'36" W	8.70'
L6	S 65°20'12" W	55.36'
L7	N 41°10'32" W	6.94'
L8	S 61°49'26" E	16.25'
L9	S 28°10'34" W	2.00'
L10	N 61°49'26" W	14.39'
L11	N 41°10'32" W	2.36'

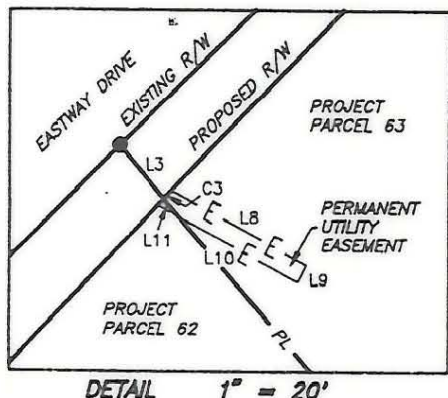
STATE PLANE GRID NORTH



JEANNETTE R. WEBB
D.B. 1931-299

McIVER LEE VANN, JR.
TAX CODE- 159-062-31
DEED- 5710-072
DEED-
TOTAL AREA- 14115 sf = 0.324 ac.
AREA TAKEN- 403 sf = 0.009 ac.
AREA REMAINING- 13712 sf = 0.315 ac.
TEMP. CONST. ESM'T.- 1129 sf = 0.026 ac.
PERM. UTIL. ESM'T.- 32 sf = 0.001 ac.

J. J. PETTIT
D.B. 4811-546



DETAIL 1" = 20'

A PORTION OF
LOTS 116-118,
MAYVIEW HILLS
SUBDIVISION
MAP BOOK 5, PAGE 5

RALPH C. KENLEY
D.B. 5950-249

RUSSELL BISHOP
D.B. 2324-018



NOTES:

- 1) Property corners shown as solid circles were located by actual survey.
- 2) Bearings and distances shown in parentheses are based on deed information.
- 3) This map was prepared for the purpose of property acquisition only, and is not intended to be a boundary survey of the total property shown.
- 4) Acquisition and Easement areas shown were calculated using a combination of field survey data, information provided in the legal descriptions, and plats called for in the legal descriptions.
- 5) State Plane Coordinate System is NAD 83.
- 6) All distances shown on this map are horizontal ground distances unless otherwise noted.
- 7) Grid Coordinates for GPS Monument "M-065" - N=529247.48 E=1459413.91

LEGEND:
EXISTING PROPERTY CORNER - ●
CALCULATED POINT - ○

THIS PLAT WAS PREPARED
UNDER MY SUPERVISION
C.A. Holland Jr.
C.A. HOLLAND JR.
NCRLS L-3049

PREPARED BY
C.A. HOLLAND SURVEYORS, INC.

PREPARED FOR
CHARLOTTE ENGINEERING DEPARTMENT

REVISIONS	MONROE - EASTWAY - WENDOVER INTERSECTION IMPROVEMENTS	JOB NO.
		PROJECT PARCEL NO. 62
	PROPERTY OF	SHEET 62
	McIVER LEE VANN, JR. and wife, BARBARA M. VANN	OF
DRAWN BY: RHW		
CHECKED BY: CAH		
CAH SURVEY SUPVR.		

COMPUTER FILENAME: 06231.DWG BACKUP DISC: ACD-123 DATE: SEPTEMBER 1, 1991 SCALE: 1" = 40'

159-062-31