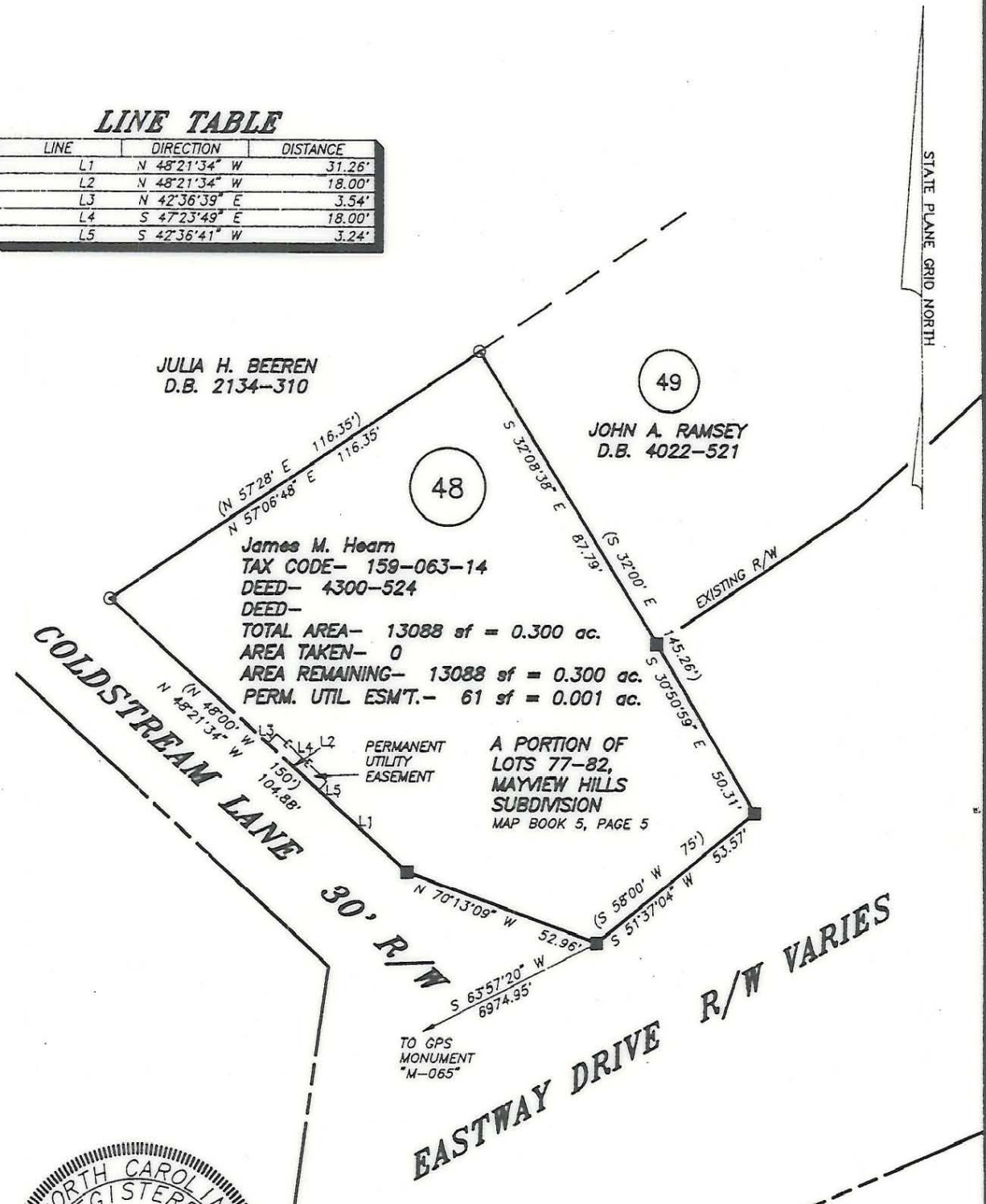


LINE TABLE

LINE	DIRECTION	DISTANCE
L1	N 48°21'34" W	31.26'
L2	N 48°21'34" W	18.00'
L3	N 42°36'39" E	3.54'
L4	S 47°23'49" E	18.00'
L5	S 42°36'41" W	3.24'



- NOTES:
- 1) Property corners shown as solid circles were located by actual survey.
 - 2) Bearings and distances shown in parentheses are based on deed information.
 - 3) This map was prepared for the purpose of property acquisition only, and is not intended to be a boundary survey of the total property shown.
 - 4) Acquisition and Easement areas shown were calculated using a combination of field survey data, information provided in the legal descriptions, and plats called for in the legal descriptions.
 - 5) State Plane Coordinate System is NAD 83.
 - 6) All distances shown on this map are horizontal ground distances unless otherwise noted.
 - 7) Grid Coordinates for GPS Monument "M-065" - N=529247.48 E=1459413.91

LEGEND:
 EXISTING PROPERTY CORNER - ●
 CALCULATED POINT - ○
 NCDOT R/W MONUMENT - ■

THIS PLAT WAS PREPARED UNDER MY SUPERVISION
C.A. Holland Jr.
 C.A. HOLLAND JR.
 NCRLS L-3049

PREPARED FOR CHARLOTTE ENGINEERING DEPARTMENT		
REVISIONS	MONROE - EASTWAY - WENDOVER INTERSECTION IMPROVEMENTS	JOB NO.
DRAWN BY: RHW CHECKED BY: CAH	PROPERTY OF JAMES M. HEARN and wife, JANICE L. HEARN	PROJECT PARCEL NO. 48
CAH SURVEY SUPVR.	DATE: SEPTEMBER 1, 1991	SHEET 48 OF
PREPARED BY C.A. HOLLAND SURVEYORS, INC.	SCALE: 1" = 40'	COMPUTER FILENAME: 06314.DWG BACKUP DISC: ACD-122

159-063-14