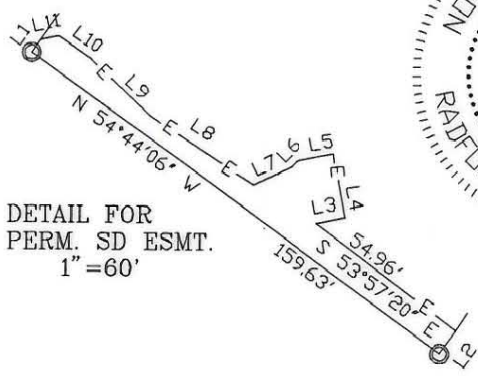
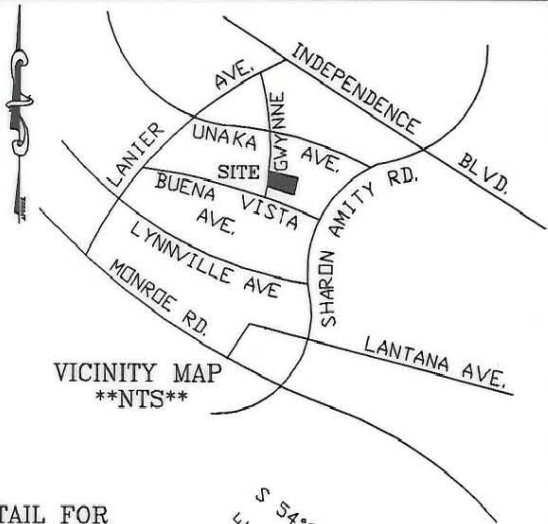
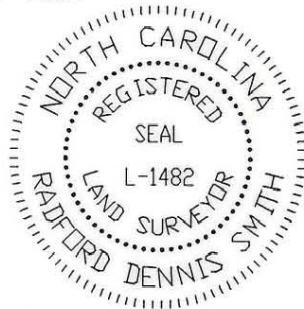


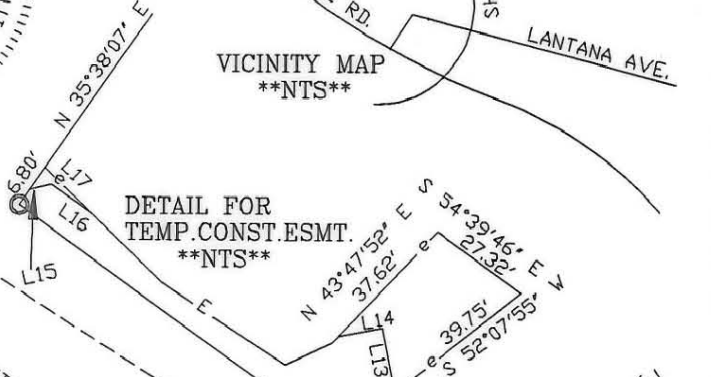
THIS PLAT WAS PREPARED UNDER MY SUPERVISION

R. Dennis Smith 9-3-93

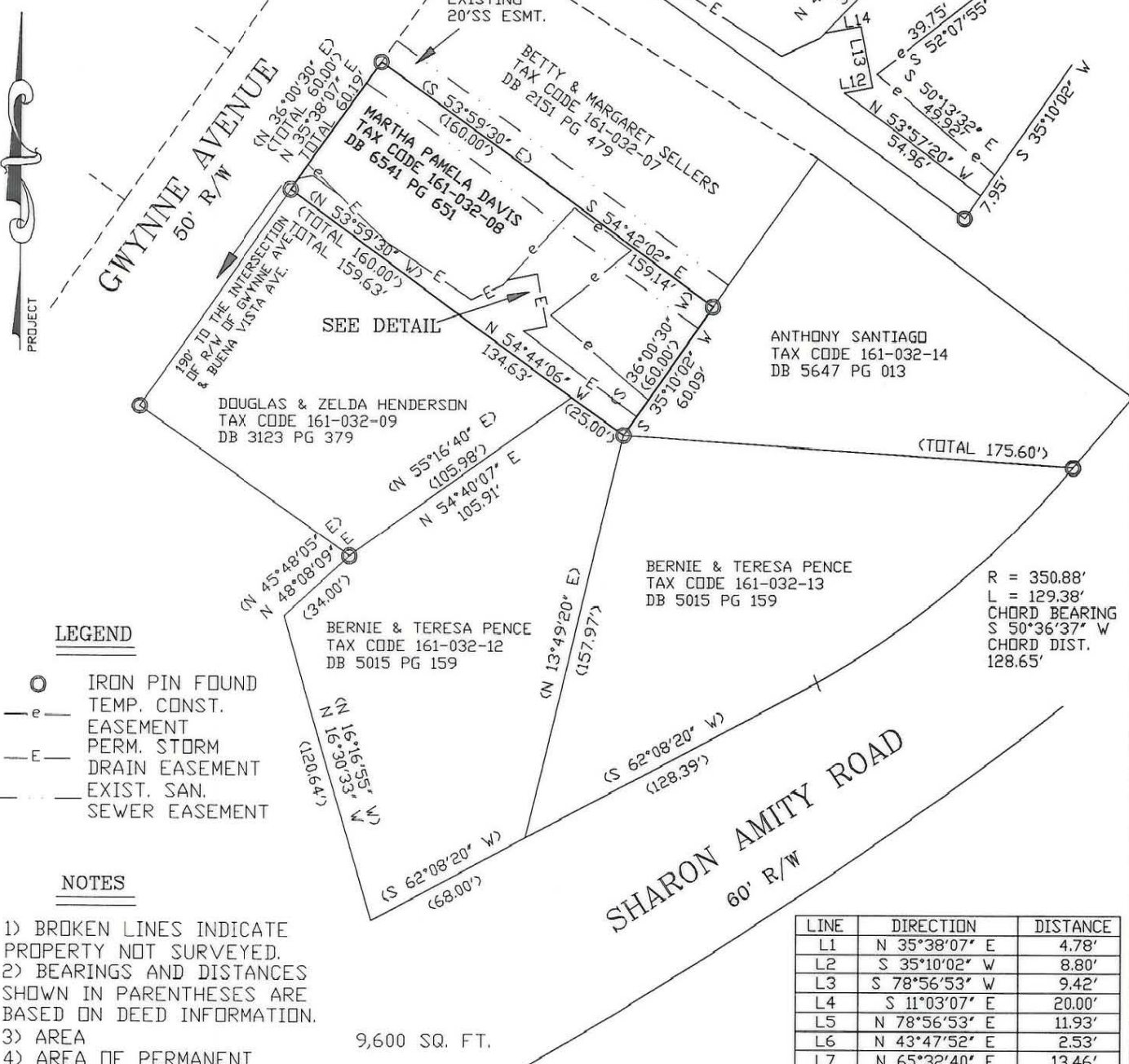
NC REG. LAND SURVEYOR NO. L-1482



DETAIL FOR
PERM. SD ESMT.
1"=60'



DETAIL FOR
TEMP. CONST. ESMT.
NTS



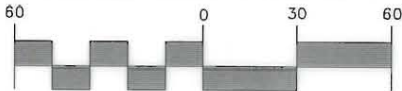
LEGEND

- IRON PIN FOUND
- e- TEMP. CONST.
- E- EASEMENT
- E- PERM. STORM DRAIN EASEMENT
- - - EXIST. SAN. SEWER EASEMENT

NOTES

- 1) BROKEN LINES INDICATE PROPERTY NOT SURVEYED.
- 2) BEARINGS AND DISTANCES SHOWN IN PARENTHESES ARE BASED ON DEED INFORMATION.
- 3) AREA 9,600 SQ. FT.
- 4) AREA OF PERMANENT STORM DRAIN EASEMENT 1,659 SQ. FT.
- 5) AREA REMAINING 7,941 SQ. FT.
- 6) AREA OF TEMPORARY CONSTRUCTION EASEMENT 1,362 SQ. FT.

GRAPHIC SCALE



(IN FEET)
1 inch = 60 ft.

PREPARED BY:
CITY OF CHARLOTTE
ENGINEERING DEPARTMENT
600 EAST FOURTH STREET
CHARLOTTE, NC 28202
704-336-2291

LINE	DIRECTION	DISTANCE
L1	N 35°38'07" E	4.78'
L2	S 35°10'02" W	8.80'
L3	S 78°56'53" W	9.42'
L4	S 11°03'07" E	20.00'
L5	N 78°56'53" E	11.93'
L6	N 43°47'52" E	2.53'
L7	N 65°32'40" E	13.46'
L8	S 57°15'37" E	39.03'
L9	S 46°48'15" E	25.84'
L10	S 55°14'42" E	12.72'
L11	N 77°25'56" E	5.90'
L12	N 78°56'53" E	9.42'
L13	N 11°03'07" W	20.00'
L14	S 78°56'53" W	11.93'
L15	S 77°25'56" W	5.90'
L16	N 55°14'42" W	12.72'
L17	S 46°48'15" E	16.80'

<p>CHARLOTTE ENGINEERING DEPARTMENT</p>		
REVISIONS	GWYNNE and LANIER STORM DRAIN IMPROVEMENT	JOB NO. 91303
		FILE NO. DAVIS
DRAWN BY DB	PROPERTY OF MARTHA P. DAVIS CHARLOTTE, MECKLENBURG COUNTY, NC	SHEET 1
CHECKED BY DHS		OF 1
SURVEY SUPVR.		DATE 8-26-93 SCALE 1"=60'

DB 7496 DB7448
PG 514 PG 797 161-032-08