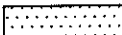
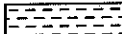
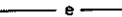
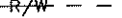




NOTE:

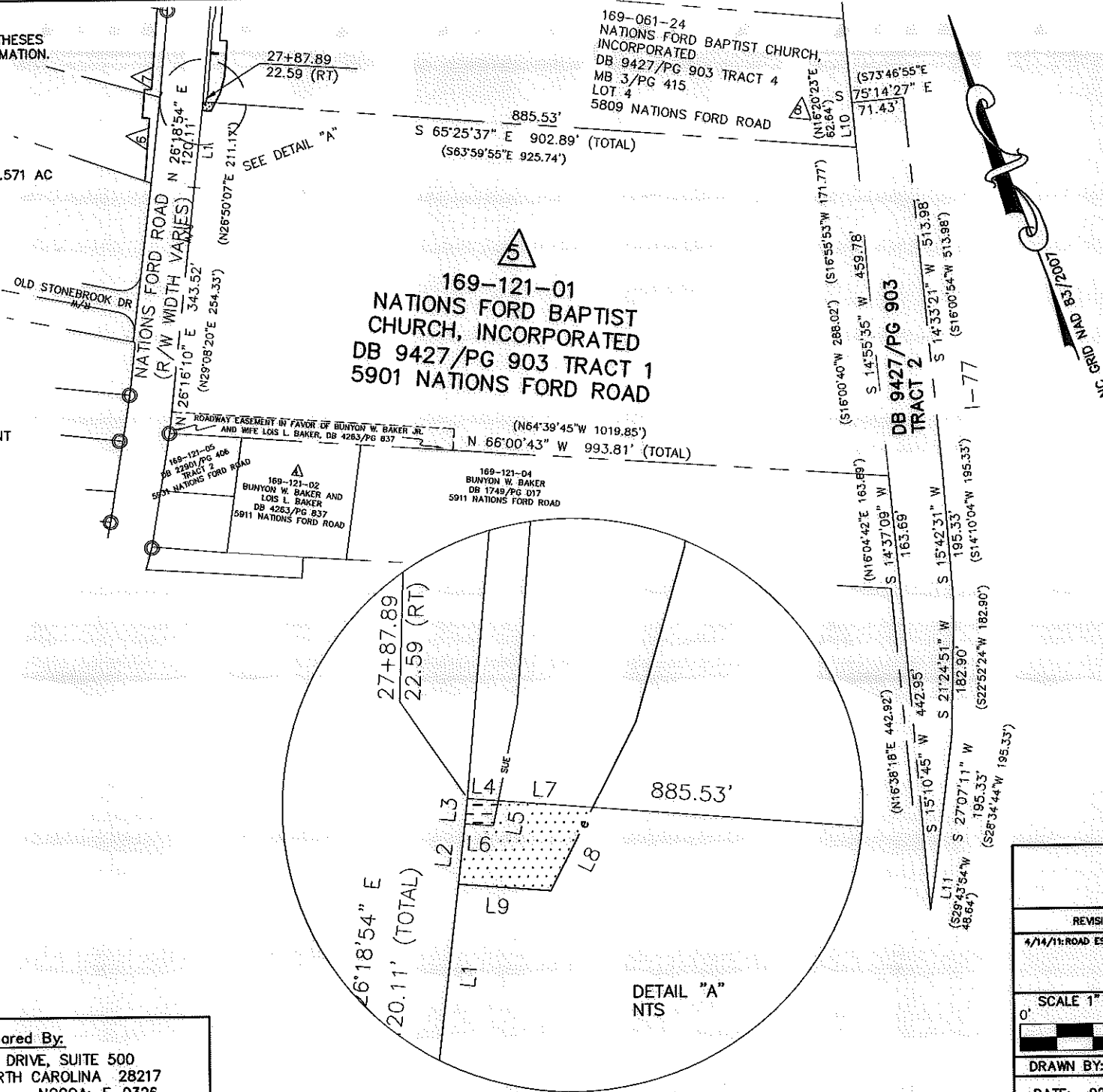
- 1) BEARINGS AND DISTANCES SHOWN IN PARENTHESES ARE BASED ON RECORDED MAP OR DEED INFORMATION.
- 2) TOTAL AREA: 504,013 SQ FT OR 11.571 AC
- 3) AREA IN TCE: 165 SQ FT OR 0.004 AC
- 4) AREA IN SUE: 14 SQ FT
- 5) FEE AREA REMAINING: 504,013 SQ FT OR 11.571 AC

LEGEND

TCE = TEMPORARY CONSTRUCTION EASEMENT
 SUE = SIDEWALK AND UTILITY EASEMENT

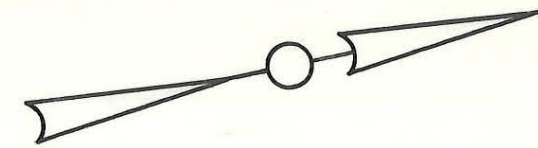
-  = TCE
-  = SUE
-  = TCE
-  = EXISTING R/W
-  = SUE
-  = IRON PIN FOUND

LINE	BEARING	DISTANCE
L1	N 26°18'54" E	108.17'
L2	N 26°18'54" E	8.42'
L3	N 26°18'54" E	3.52'
L4	S 65°25'37" E	4.27'
L5	S 31°32'16" W	3.54'
L6	N 65°28'25" W	3.94'
L7	S 65°25'37" E	13.10'
L8	S 47°06'49" W	12.93'
L9	N 65°23'01" W	12.78'
L10	N 14°54'39" E	62.64'
L11	S 28°16'21" W	48.64'



PBSJ Plans Prepared By:
 5200 77 CENTER DRIVE, SUITE 500
 CHARLOTTE, NORTH CAROLINA 28217
 (704) 522-7275 NCCOA: F-0326

ACQUISITION BY DB 26882 PG 551



ROAD

C.C. THOMAS
4000-141

B.W. BAKER JR.
2279-287

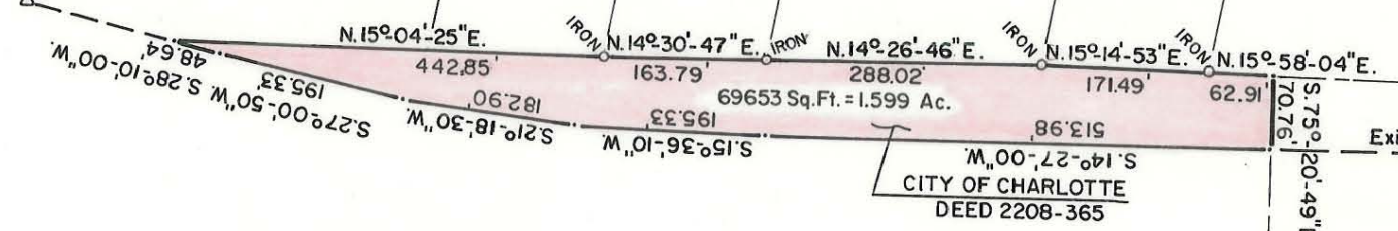
B.W. BAKER JR.
1749-17

B.W. BAKER SR.

B.W. BAKER JR.

E.F. SMITH
1015-292

MAP BOOK 3, PAGE 415



INTERSTATE HWY. 77

CITY OF CHARLOTTE
DEED 2208-365

CITY OF CHARLOTTE
Deed 2208-365
22.679 AC.



NOTE: Property corners shown circled were located by actual survey. Bearings are based on I-77 CONSTR. PLANS

PROJECT NO. 8.16537

This plat was prepared under my supervision Stephen A. Gilbert
N. C. Reg. Surveyor No. L-1785

CITY OF CHARLOTTE NORTH CAROLINA DEPARTMENT OF PUBLIC WORKS ENGINEERING DIVISION		
REVISIONS	PROPERTY OF CITY OF CHARLOTTE	JOB NO.
		FILE NO.
DRAWN BY M.S.	INTERSTATE HWY. 77 AT TYVOLA ROAD	SHEET 1
CHECKED BY RW		OF 1
CITY ENGINEER	DATE NOV. 27, 1979 SCALE 1" = 200'	

TYVOLA

169-

169-121-01