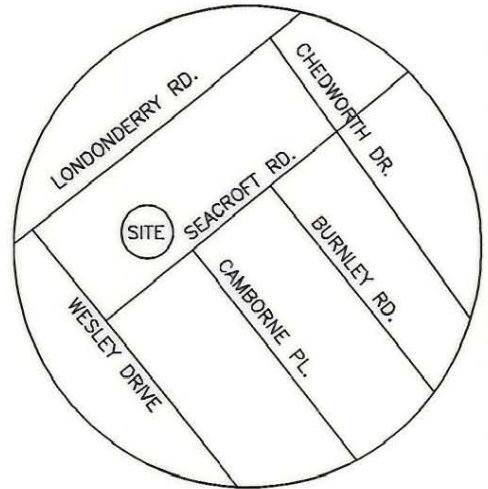
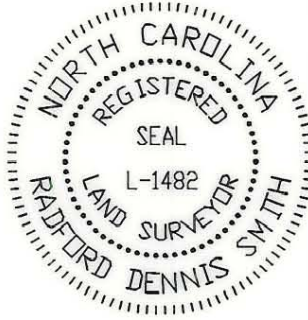
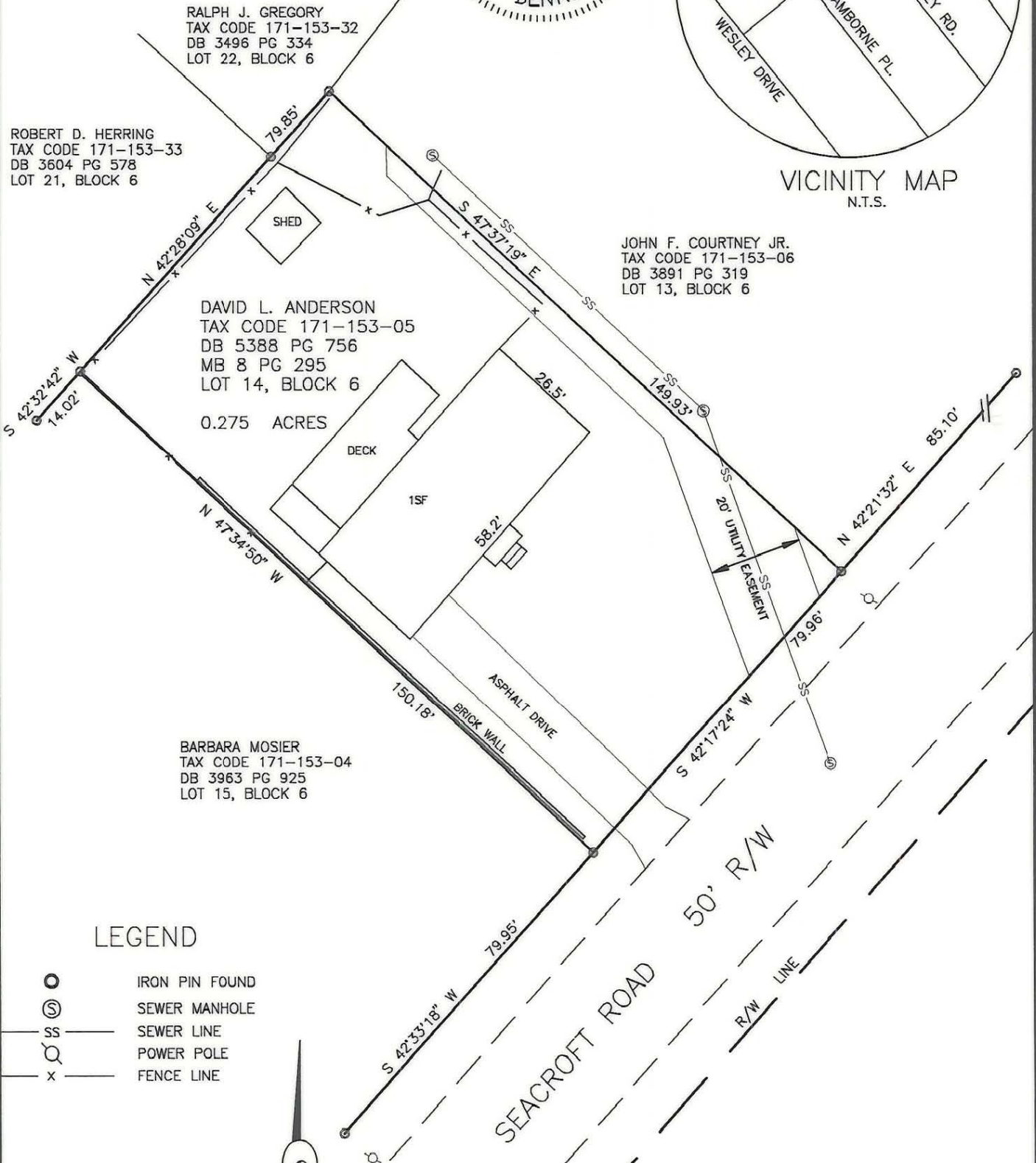


I, R. DENNIS SMITH CERTIFY THAT THIS PLAT WAS PREPARED UNDER MY SUPERVISION FROM A SURVEY CONDUCTED UNDER MY SUPERVISION. THE ERROR OF CLOSURE OF THIS SURVEY WAS 1:10,000+.

R. Dennis Smith 5-15-95
 R. DENNIS SMITH N.C.R.L.S. L-1482 DATE



VICINITY MAP
N.T.S.



RALPH J. GREGORY
 TAX CODE 171-153-32
 DB 3496 PG 334
 LOT 22, BLOCK 6

ROBERT D. HERRING
 TAX CODE 171-153-33
 DB 3604 PG 578
 LOT 21, BLOCK 6

DAVID L. ANDERSON
 TAX CODE 171-153-05
 DB 5388 PG 756
 MB 8 PG 295
 LOT 14, BLOCK 6
 0.275 ACRES

JOHN F. COURTNEY JR.
 TAX CODE 171-153-06
 DB 3891 PG 319
 LOT 13, BLOCK 6

BARBARA MOSIER
 TAX CODE 171-153-04
 DB 3963 PG 925
 LOT 15, BLOCK 6

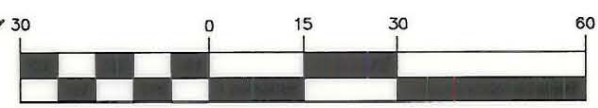
LEGEND

- IRON PIN FOUND
- ⊙ SEWER MANHOLE
- SS SEWER LINE
- ⊕ POWER POLE
- x FENCE LINE



MB 8 PG 295, 6-23-58

GRAPHIC SCALE



(IN FEET)
 1 inch = 30 ft.

PREPARED BY:
 CITY OF CHARLOTTE
 ENGINEERING DEPARTMENT
 600 EAST FOURTH STREET
 CHARLOTTE, NC 28202
 704-336-2291

CHARLOTTE ENGINEERING DEPARTMENT		
REVISIONS	BOUNDARY AND PHYSICAL SURVEY FOR THE CITY OF CHARLOTTE LONDONDERRY STORM DRAINAGE IMPROVEMENTS	JOB NO. 671-94-712
	PROPERTY OF DAVID L. ANDERSON LOT 14, BLOCK 6, MONTCLAIRE SUB. CHARLOTTE, MECKLENBURG CO., NC	FILE NO.
		PHYSICAL
		SHEET 1
		OF 1
DRAWN BY M. STYERS	DATE 5-11-95	SCALE 1"=30'
CHECKED BY <i>[Signature]</i>		
SURVEY SUPR.		

DB: 8405-353
 171-153-05