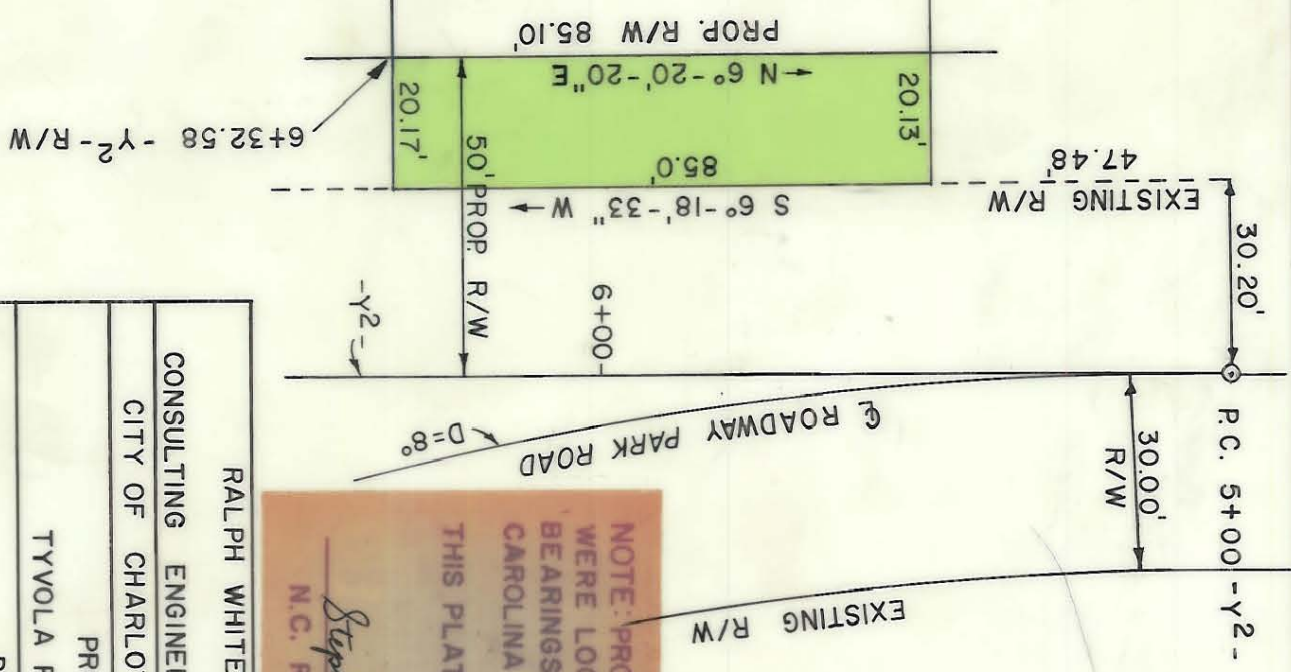


TOTAL AREA 18006.82 sq. ft. 0.413 ac.
 AREA TAKEN 1713.40 sq. ft. 0.039 ac.
 AREA REMAINING 16293.42 sq. ft. 0.374 ac.

WITHROW

BUSH ENTERPRISES
 DEED BOOK REF. NO. 3603-146



NOTE: PROPERTY CORNERS SHOWN CIRCLED WERE LOCATED BY ACTUAL SURVEY. BEARINGS ARE BASED ON NORTH CAROLINA COORDINATE SYSTEM.

THIS PLAT WAS PREPARED UNDER MY SUPERVISION.

Stephen A. Billist P.E.
 N.C. REG. ENGINEER NO. 6233

RALPH WHITEHEAD & ASSOCIATES	
CONSULTING ENGINEERS	CHARLOTTE, N.C.
CITY OF CHARLOTTE PROJECT NO. 513-66-433	
PROPOSED R/W	
TYVOLA ROAD RELOCATION	RW-87
PROPERTY OF	
BUSH ENTERPRISES	
DRAWN BY W.N.C.	DATE 6-74
CHECKED BY J.W.C.	DATE 6-74
SCALE 1" = 30'	DWG. NO. D-1223.11P
SHEET 9 OF 10	



171-24C-98