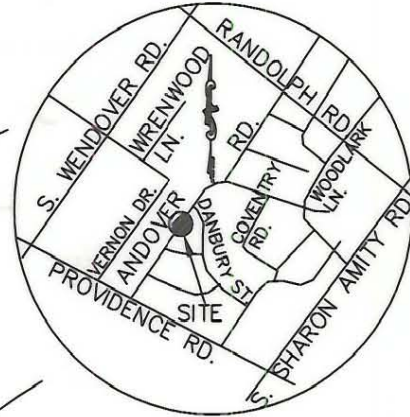


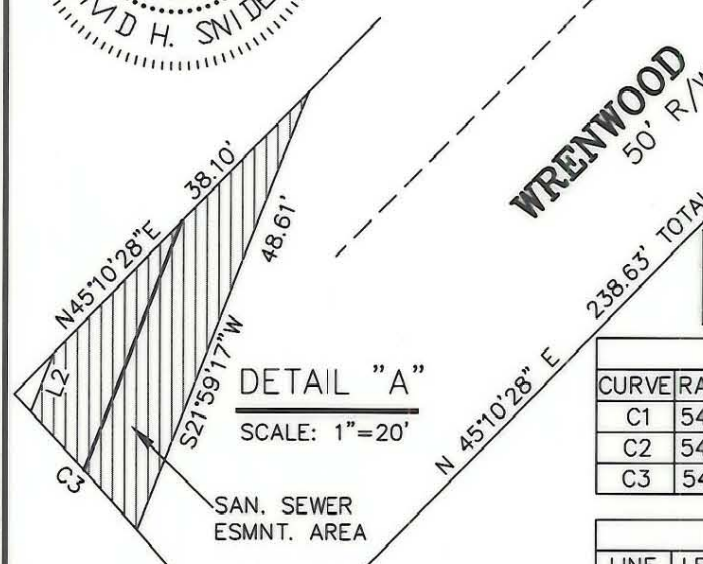
I, DAVID H. SNIDER, CERTIFY THAT THIS PLAT WAS PREPARED UNDER MY SUPERVISION AND THAT THE PLAT WAS PREPARED FOR THE PURPOSE OF ACQUISITION AND EASEMENTS ONLY, AND IS NOT INTENDED TO BE A BOUNDARY SURVEY OF PROPERTY

David H. Snider 8/3/99
 DAVID H. SNIDER, NC R.L.S. L-2942 DATE



VICINITY MAP
 NOT TO SCALE

Y L HONEY & LEE ELLIS
 KING & WVS
 TAX CODE: 181-072-03
 DB: 3885 0994

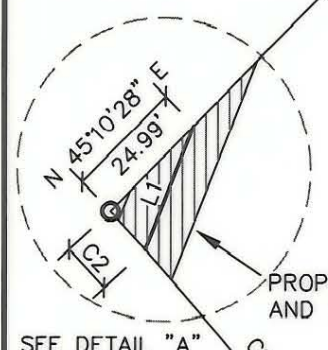


DETAIL "A"
 SCALE: 1"=20'

**SANITARY SEWER
 ESMNT. AREA 413 SQ. FT.**

CURVE TABLE					
CURVE	RADIUS	LENGTH	CHORD BEARING	CHORD DIST	
C1	540.69	103.47	N 38°26'31" W	103.32'	
C2	540.69	10.83	N 43°21'02" W	10.83'	
C3	540.69	16.58	N 42°46'25" W	16.58'	

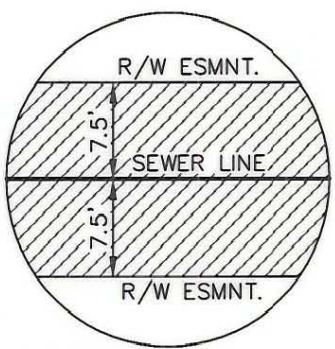
LINE TABLE		
LINE	LENGTH	BEARING
L1	27.49	N 21°59'17" E
L2	6.52	N 21°59'17" E



STANLEY ARCHIBALD III
 TAX CODE: 181-072-02
 DB: 8745 0794

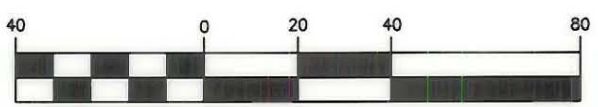
PROPOSED 10" SAN. SEWER
 AND 15' R/W

RICHARD H BENOIT
 & WF CHRISTIE
 TAX CODE: 181-072-04
 DB: 7083 0520



R/W ESMNT. DETAIL
 NOT TO SCALE

GRAPHIC SCALE



(IN FEET)
 1 inch = 40 ft.

LEGEND:

IRON PIN FOUND

PERMANENT SANITARY
 SEWER ESMNT.



PREPARED BY:
 CITY OF CHARLOTTE
 ENGINEERING DEPARTMENT
 600 EAST FOURTH STREET
 CHARLOTTE, NC 28208
 704-336-2291

		CHARLOTTE ENGINEERING DEPARTMENT	
REVISIONS		SANITARY SEWER RELOCATION ANDOVER ROAD STORM DRAINAGE IMPROVEMENT PROJECT	
1-ADDED SANITARY SEWER ESMNT. AREA 8/3/99 DBS		EASEMENT ACQUISITION OF STANLEY C ARCHIBALD III	
DRAWN BY DBS		CHARLOTTE, MECKLENBURG CO., NC	
CHECKED BY		DATE 4/8/99	
SURVEY SUPVR.		SCALE 1"=40'	
		JOB NO. 671-96-701 LAN#96701	FILE NO. PLAT6
		SHEET 1	OF 1

181-072-02