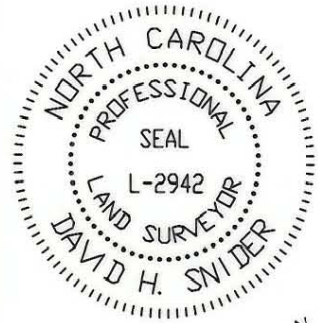


I, DAVID H. SNIDER, CERTIFY THAT THIS PLAT WAS PREPARED UNDER MY SUPERVISION AND THAT THE PLAT WAS PREPARED FOR THE PURPOSE OF ACQUISITION AND EASEMENTS ONLY, AND IS NOT INTENDED TO BE A BOUNDARY SURVEY OF PROPERTY

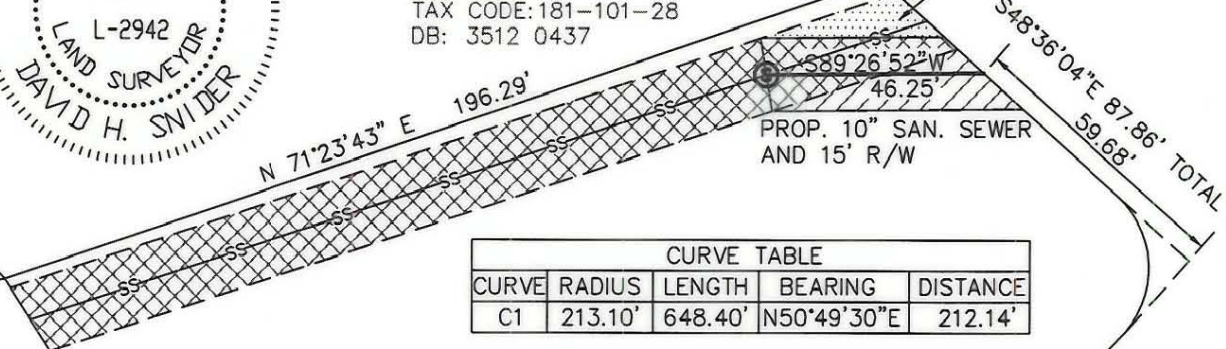
*David H. Snider* 7/6/99  
 DAVID H. SNIDER, NC P.L.S. L-2942 DATE



18  
 JOHN THOMAS & WF RUTH  
 TAX CODE: 181-101-28  
 DB: 3512 0437

EXIST. SANITARY SEWER RIGHT-OF-WAY TO BE ABANDONED

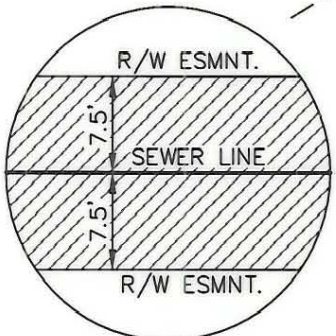
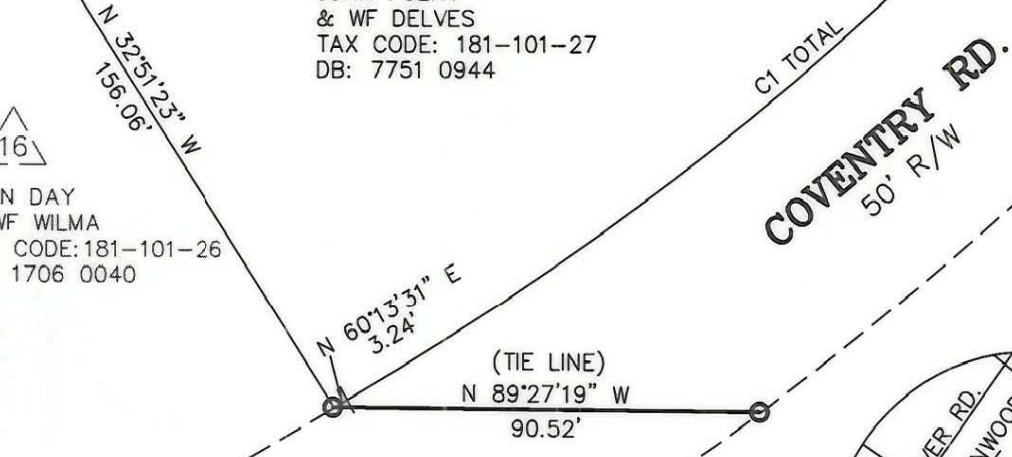
ANDOVER RD.  
 50' R/W



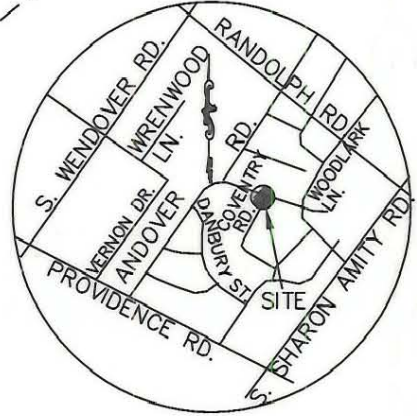
CURVE TABLE				
CURVE	RADIUS	LENGTH	BEARING	DISTANCE
C1	213.10'	648.40'	N50°49'30"E	212.14'

17  
 JOHN FOERY & WF DELVES  
 TAX CODE: 181-101-27  
 DB: 7751 0944

16  
 JOHN DAY & WF WILMA  
 TAX CODE: 181-101-26  
 DB: 1706 0040



R/W ESMNT. DETAIL  
 NOT TO SCALE



VICINITY MAP  
 NOT TO SCALE

**LEGEND:**

- IRON PIN FOUND
- PROPOSED SEWER MANHOLE
- PERMANENT SANITARY SEWER ESMNT.
- EXISTING SANITARY SEWER ESMNT.
- EXIST. SANITARY SEWER R/W TO BE ABANDONED

**GRAPHIC SCALE**



( IN FEET )  
 1 inch = 40 ft.

PREPARED BY:  
 CITY OF CHARLOTTE  
 ENGINEERING DEPARTMENT  
 600 EAST FOURTH STREET  
 CHARLOTTE, NC 28208  
 704-336-2291

CHARLOTTE ENGINEERING DEPARTMENT		
REVISIONS	SANITARY SEWER RELOCATION ANDOVER ROAD STORM DRAINAGE IMPROVEMENT PROJECT	JOB NO. 671-96-701 LAN#96701
	EASEMENT ACQUISITION OF JOHN FOERY & WF DELVES CHARLOTTE, MECKLENBURG CO., NC	FILE NO. PLATS
DRAWN BY DBS		SHEET 1
CHECKED BY		OF 1
SURVEY SUPVR. <i>DBS</i>	DATE 2/3/99	SCALE 1"=40'