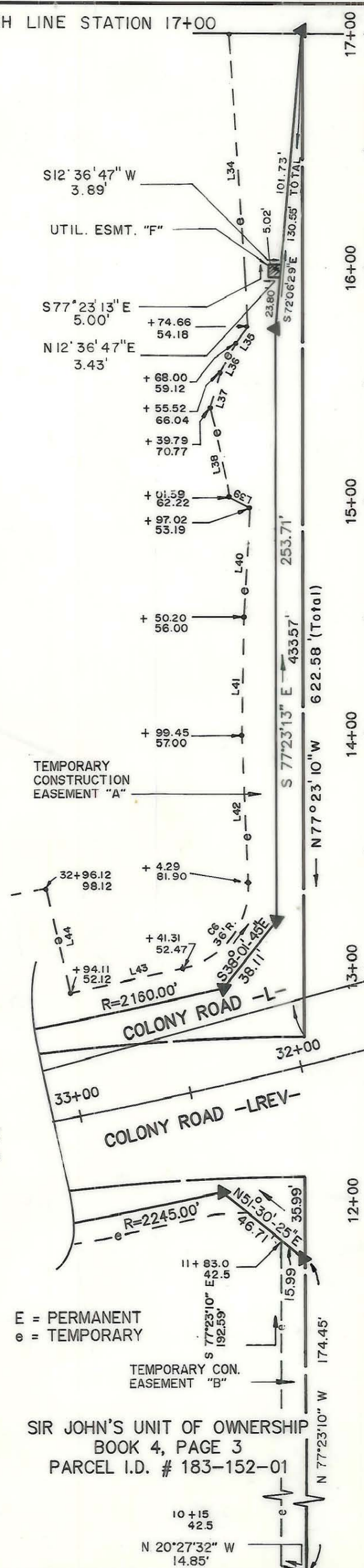
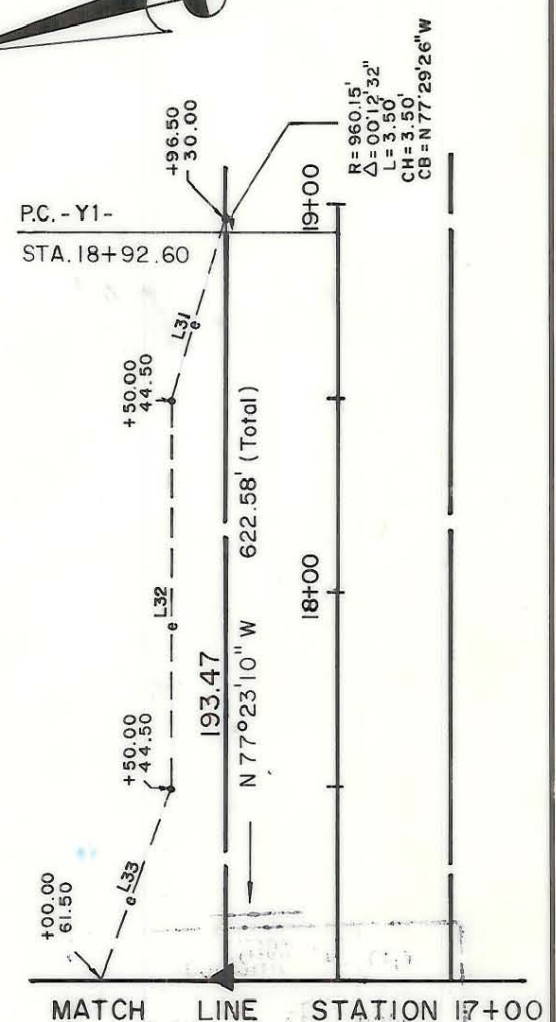


MATCH LINE STATION 17+00

CURVE C6  
 RAD 36.00  
 LENGTH 50.44  
 CHORD 46.41  
 CH. BEARING N 39°32'25" W



SHARON VIEW ROAD - Y1 -



LINE	DIRECTION	DISTANCE
L47	S 86°36'47" W	19.21'
L48	S 68°29'24" W	12.20'
L49	N 61°11'42" W	12.49'
-Y1- STA. 12+65.17=		
-LREV- STA. 31+67.61		
LINE	DIRECTION	DISTANCE
L31	60°07'02" W	53.21'
L32	N 77°23'10" W	100.00'
L33	N 58°39'29" W	52.81'
L34	N 80°46'42" W	125.55'
L35	N 40°52'13" W	8.29'
L36	N 48°25'42" W	14.27'
L37	N 60°42'00" W	16.43'
L38	S 89°56'52" W	39.15'
L39	S 39°24'26" W	10.12'
L40	N 74°00'05" W	46.90'
L41	N 76°18'26" W	50.76'
L42	N 79°48'16" W	63.30'
L43	N 00°35'31" E	51.54'
L44	N 89°16'41" E	46.04'
L45	N 02°49'34" E	47.34'
L46	N 05°58'28" E	44.94'

E = PERMANENT  
 e = TEMPORARY

SIR JOHN'S UNIT OF OWNERSHIP  
 BOOK 4, PAGE 3  
 PARCEL I.D. # 183-152-01

**CHARLOTTE**  
ENGINEERING DEPARTMENT

REVISIONS	<b>COLONY ROAD</b>	JOB NO. 288044
1/15/90	PROPERTY OF <b>SIR JOHN'S HILL</b> UNIT OF OWNERSHIP	FILE NO.
DRAWN BY: S. F. B. CHECKED BY:	DATE: 7-25-89 SCALE: 1"=50'	SHEET 12F/6 OF 18

183-15c