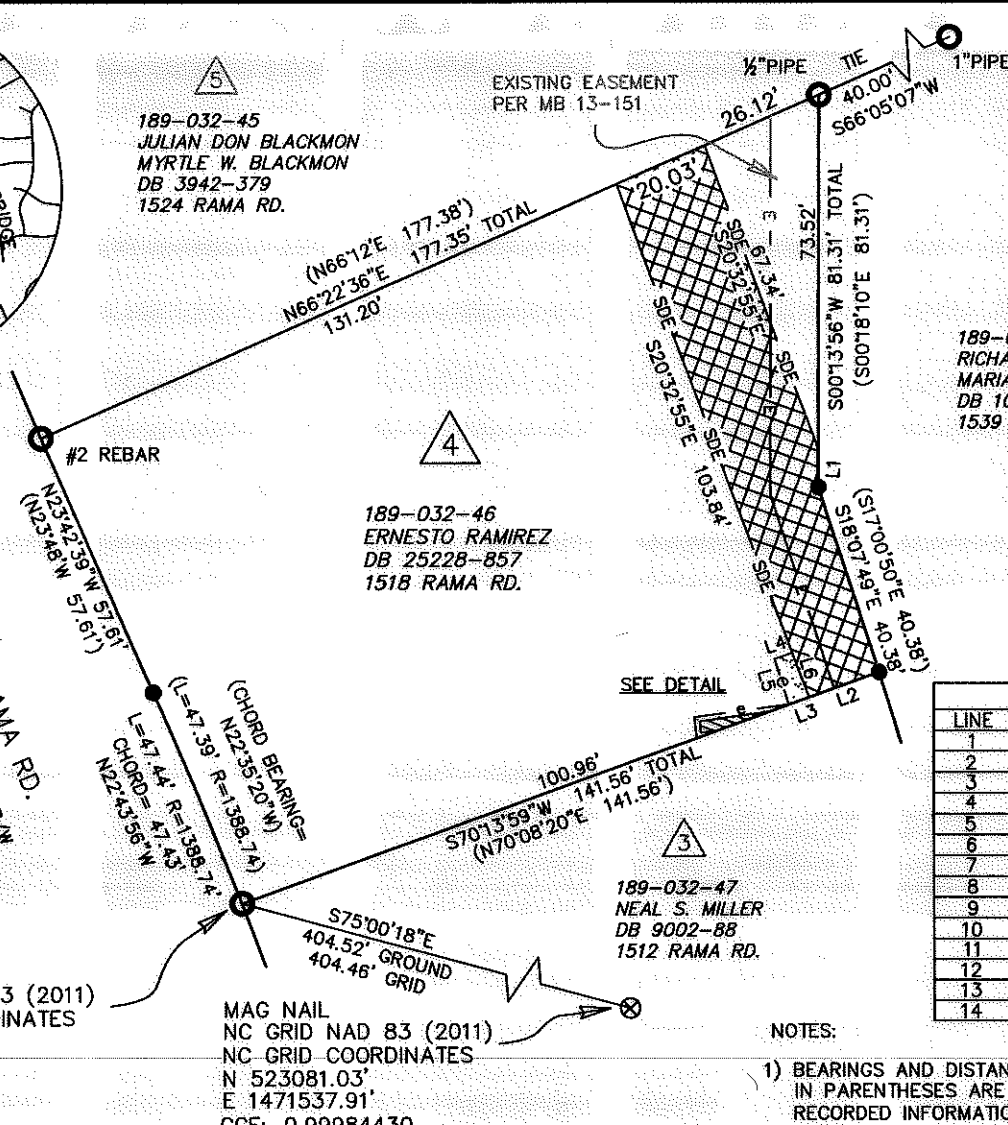


VICINITY MAP  
Not to Scale



189-032-45  
JULIAN DON BLACKMON  
MYRTLE W. BLACKMON  
DB 3942-379  
1524 RAMA RD.

189-032-46  
ERNESTO RAMIREZ  
DB 25228-857  
1518 RAMA RD.

189-032-47  
NEAL S. MILLER  
DB 9002-88  
1512 RAMA RD.

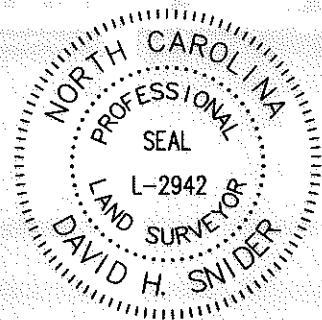
MAG NAIL  
NC GRID NAD 83 (2011)  
NC GRID COORDINATES  
N 523081.03'  
E 1471537.91'  
CGF: 0.99984430

State of North Carolina  
County of Mecklenburg

I, \_\_\_\_\_, Review Officer of Mecklenburg County, certify that the map or plat to which this certification is affixed meets all statutory requirements for recording.

Review Officer \_\_\_\_\_ Date \_\_\_\_\_

I, DAVID H. SNIDER, CERTIFY THAT THIS PLAT WAS PREPARED UNDER MY SUPERVISION AND THAT THE PLAT WAS PREPARED FOR THE PURPOSE OF EASEMENTS ONLY, AND IS NOT INTENDED TO BE A BOUNDARY SURVEY OF PROPERTY SHOWN.  
*David H. Snider* 5/29/14  
DAVID H. SNIDER, NC P.L.S. L-2942 DATE



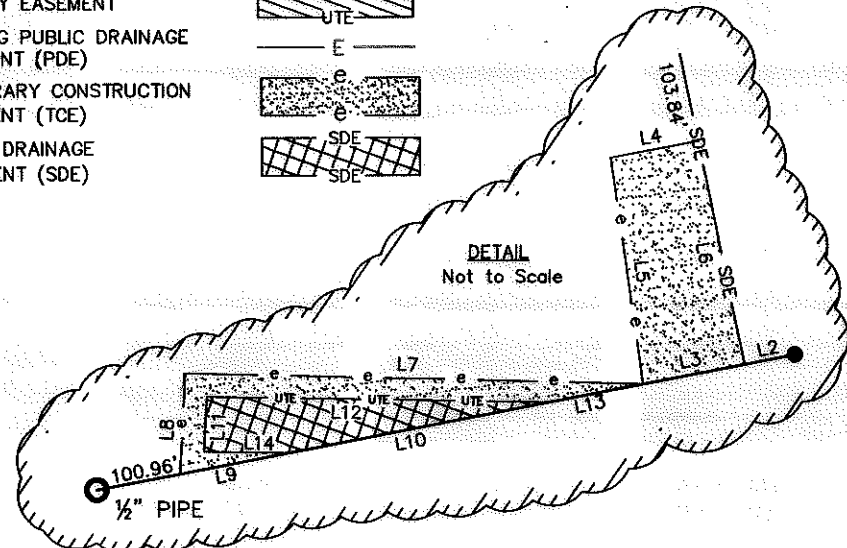
LEGEND

- REBAR OR IRON PIPE FOUND
- CITY TRAVERSE MAG NAIL
- CALCULATED POINT
- LINES SURVEYED
- LINES NOT SURVEYED
- UTILITY EASEMENT
- EXISTING PUBLIC DRAINAGE EASEMENT (PDE)
- TEMPORARY CONSTRUCTION EASEMENT (TCE)
- STORM DRAINAGE EASEMENT (SDE)

LINE	BEARING	DIST.
1	S0°13'56\"W	7.79'
2	N70°13'59\"E	15.54'
3	N70°13'59\"E	4.49'
4	S70°18'23\"W	3.88'
5	S16°59'24\"E	9.86'
6	S20°32'55\"E	9.84'
7	N82°26'04\"E	19.98'
8	S5°48'37\"E	4.35'
9	S70°13'59\"W	4.81'
10	N70°13'59\"E	11.54'
11	N5°48'37\"W	2.37'
12	N82°03'16\"E	14.88'
13	N70°13'59\"E	4.23'
14	N81°58'01\"E	3.67'

NOTES:

- 1) BEARINGS AND DISTANCES SHOWN IN PARENTHESES ARE BASED ON RECORDED INFORMATION, MB 13-151
- 2) TOTAL AREA 17,033 SQ.FT.
- 3) UTILITY EASEMENT 22 SQ.FT.
- 4) TEMPORARY CONSTRUCTION EASEMENT 63 SQ.FT.
- 5) STORM DRAINAGE EASEMENT 1,500 SQ.FT.
- 6) EXISTING EASEMENT TO BE ACCEPTED BY THE CITY OF CHARLOTTE AS SDE 631 SQ.FT.
- 7) TOTAL SDE 2,131 SQ.FT.
- 8) AREA REMAINING 17,033 SQ.FT.
- 9) MB 13-151 SHOWS EASEMENT(S) WITH UNSPECIFIED PURPOSE(S)



DETAIL  
Not to Scale

NC GRID NAD 83 (2011)

1/2" PIPE  
NC GRID NAD 83 (2011)  
NC GRID COORDINATES  
N 523185.68'  
E 1471147.22

PREPARED BY:  
CITY OF CHARLOTTE  
ENGINEERING & PROPERTY MANAGEMENT  
600 EAST FOURTH STREET  
CHARLOTTE, NC 28208  
704-336-2291

<b>CHARLOTTE</b>		
ENGINEERING & PROPERTY MANAGEMENT DEPARTMENT		
REVISIONS	RAMA ROAD 1512 STORM WATER MAINTENANCE IMPROVEMENT PROJECT	JOB NO. 671-13-70
5/31/14 UTE & TITLE BLOCK	OWNER: ERNESTO RAMIREZ TAX CODE: 189-032-46 CHARLOTTE, MECKLENBURG CO., NC	FILE NO.
0 1"=40" 40'	DRAWN BY JPG	CHECKED BY GAI SURVEY SUPVR. <i>AS</i>
P:\Surproj\SWATER\MAINT\rama\1512\PLATS\1518 RAMA RD PLAT(4)_rev.dwg		SHEET 1 OF 1

ACQUISITION BY DB 29453 PG 530 AND 535