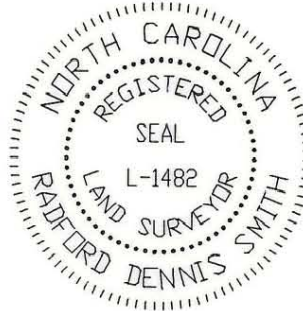



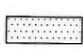
I, R. DENNIS SMITH, CERTIFY THAT THIS PLAT WAS PREPARED UNDER MY SUPERVISION AND THAT THE PLAT WAS PREPARED FOR THE PURPOSE OF ACQUISITION AND EASEMENTS ONLY, AND IS NOT INTENDED TO BE A BOUNDARY SURVEY OF PROPERTY SHOWN.

R. Dennis Smith 10-23-97

R. DENNIS SMITH, NC R.L.S. L-1482 DATE

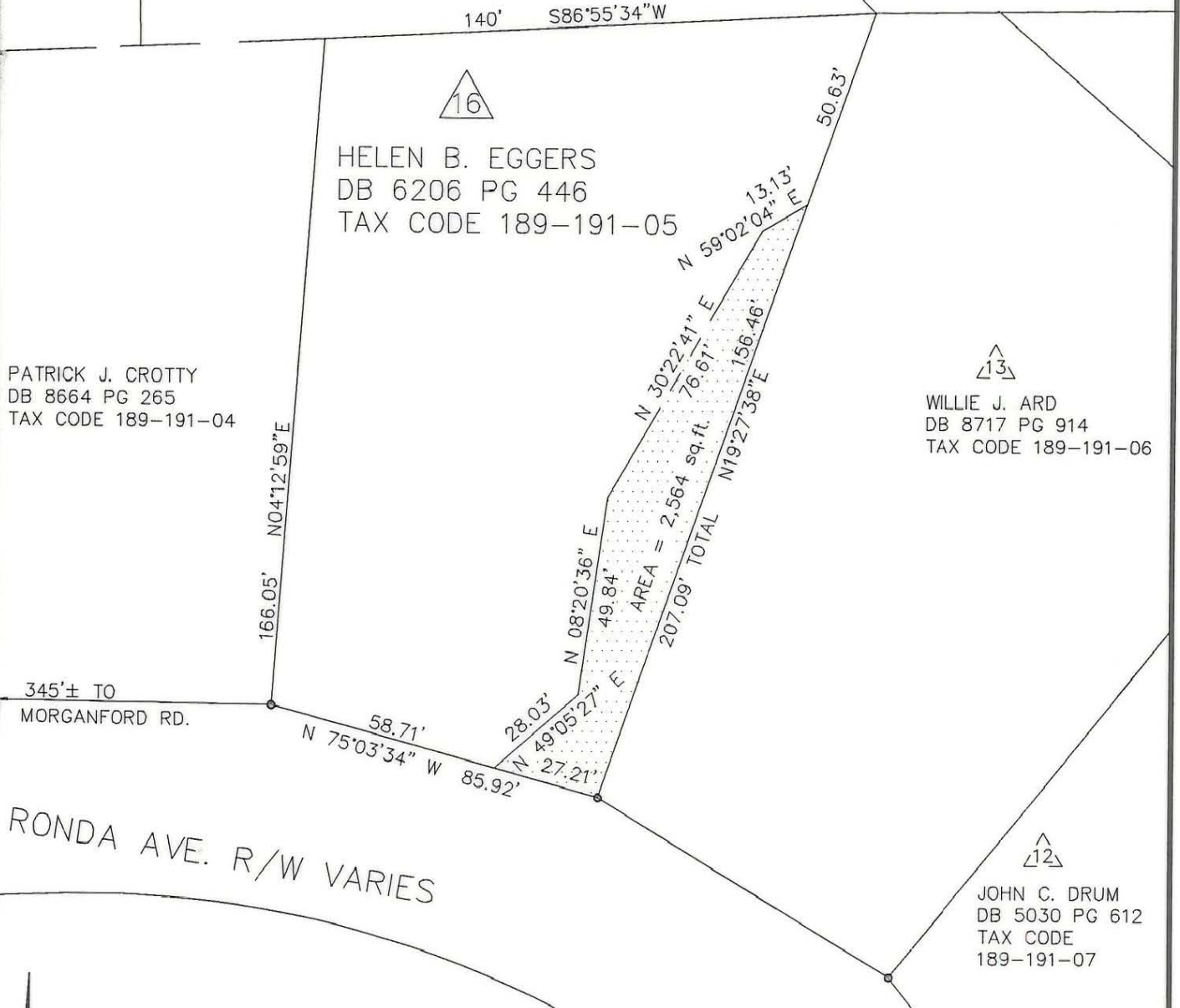


LEGEND

IRON PIN FOUND 
 PROPOSED DRAINAGE EASEMENTS 

JOHN C. WELCH
 DB 5353 PG 402
 TAX CODE 189-191-54

RICKY L. GULLEDGE
 DB 7828 PG 71
 TAX CODE 189-191-53

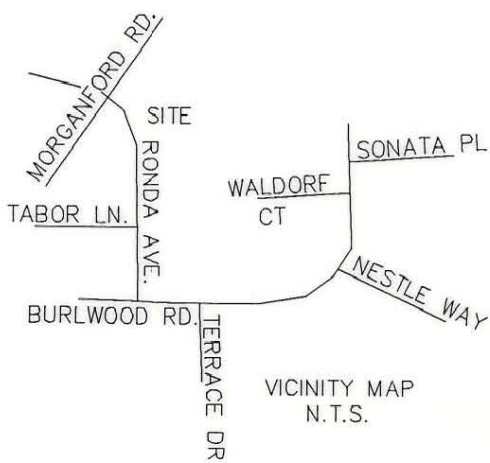
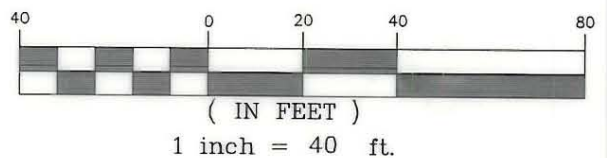


PATRICK J. CROTTY
 DB 8664 PG 265
 TAX CODE 189-191-04


WILLIE J. ARD
 DB 8717 PG 914
 TAX CODE 189-191-06

JOHN C. DRUM
 DB 5030 PG 612
 TAX CODE 189-191-07

GRAPHIC SCALE



PREPARED BY:
 CITY OF CHARLOTTE
 ENGINEERING DEPARTMENT
 600 EAST FOURTH STREET
 CHARLOTTE, NC 28208
 704-336-2291

 CHARLOTTE ENGINEERING DEPARTMENT		
REVISIONS	STORM DRAINAGE EASEMENT RONDA AVE. STORM DRAIN	JOB NO. LAN 95-702 324-96-791
DRAWN BY M. STYERS		FILE NO. PARCEL16
CHECKED BY <i>RDA</i>	PROPERTY OF HELEN B. EGGERS CHARLOTTE, MECKLENBURG CO., NC	SHEET 1
SURVEY SUPVR.		OF 1
DATE 10-97	SCALE 1"=40'	

189-191-05