

00+01

ED ELAM REALTY CO., INC.
8 EVCO CONSTRUCTION CO. INC.
DEED : 5446-374

34

35

37

SELECTIVE ENTERPRISES INC.
DEED : 5399-786



WESTINGHOUSE BLVD. -L-

EXIST. R/W

EXIST. Δ 737.15'

S 66°53'27" E

468.21'

R=11409.16'
L=333.07'
CHD=333.06'
S66°15'00"E

R=11409.16'
L=157.59'
CHD=157.59'
S65°48'34"E

R=11409.16'
L=172.44'
CHD=172.44'
S66°39'13"E

R=11409.16'
L=164.13'
CHD=164.13'
S66°34'55"W

R=11409.16'
L=164.13'
CHD=164.13'
S66°34'55"W

R=11409.16'
L=164.13'
CHD=164.13'
S66°34'55"W

R=11409.16'
L=164.13'
CHD=164.13'
S66°34'55"W

R=11409.16'
L=164.13'
CHD=164.13'
S66°34'55"W

R=11409.16'
L=164.13'
CHD=164.13'
S66°34'55"W

R=11409.16'
L=164.13'
CHD=164.13'
S66°34'55"W

138.58'

164.13'

164.13'

164.13'

164.13'

164.13'

164.13'

164.13'

164.13'

R=11409.16'
L=172.44'
CHD=172.44'
S66°39'13"E

R=11409.16'
L=164.13'
CHD=164.13'
S66°34'55"W

R=11409.16'
L=164.13'
CHD=164.13'
S66°34'55"W

R=11409.16'
L=157.59'
CHD=157.59'
S65°48'34"E

R=11409.16'
L=157.59'
CHD=157.59'
S65°48'34"E

R=11409.16'
L=157.59'
CHD=157.59'
S65°48'34"E

R=11409.16'
L=157.59'
CHD=157.59'
S65°48'34"E

R=11409.16'
L=157.59'
CHD=157.59'
S65°48'34"E

R=11409.16'
L=157.59'
CHD=157.59'
S65°48'34"E

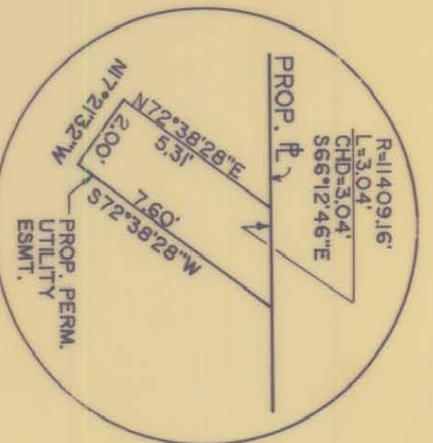
MARTIN MARIETTA CORP.
DEED : 2640-143

36

MARTIN MARIETTA CORP.
DEED : 3090-78

38

429.36' (TOTAL)
S14°31'33"W 358.51'



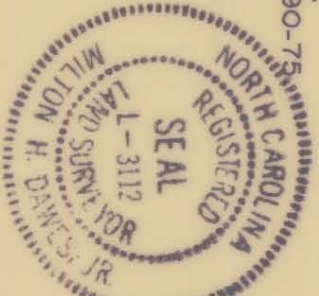
NOTE: Property corners shown circled were located by actual survey. Bearings and distances shown in parenthesis are based on deed information. Bearings are based on

N.C. COORDINATE SYSTEM

This map was prepared for the purpose of right-of-way or easement acquisition only, and is not intended to be a boundary survey of the property shown.

This plat was prepared under my supervision

N.C. Reg. Surveyor No. L-3112



PARCEL ID.# 203-121-01 (PARTIAL)

CHARLOTTE ENGINEERING DEPARTMENT

WESTINGHOUSE BLVD. PHASE IV

MARTIN MARIETTA CORP.

REVISIONS	JOB NO.
DRAWN BY SH	FILE NO.
CHECKED BY	SHEET 36C/3
DATE SEPT. 5, 1990	OF
SCALE 1" = 50'	

PROP. ACQUISITION